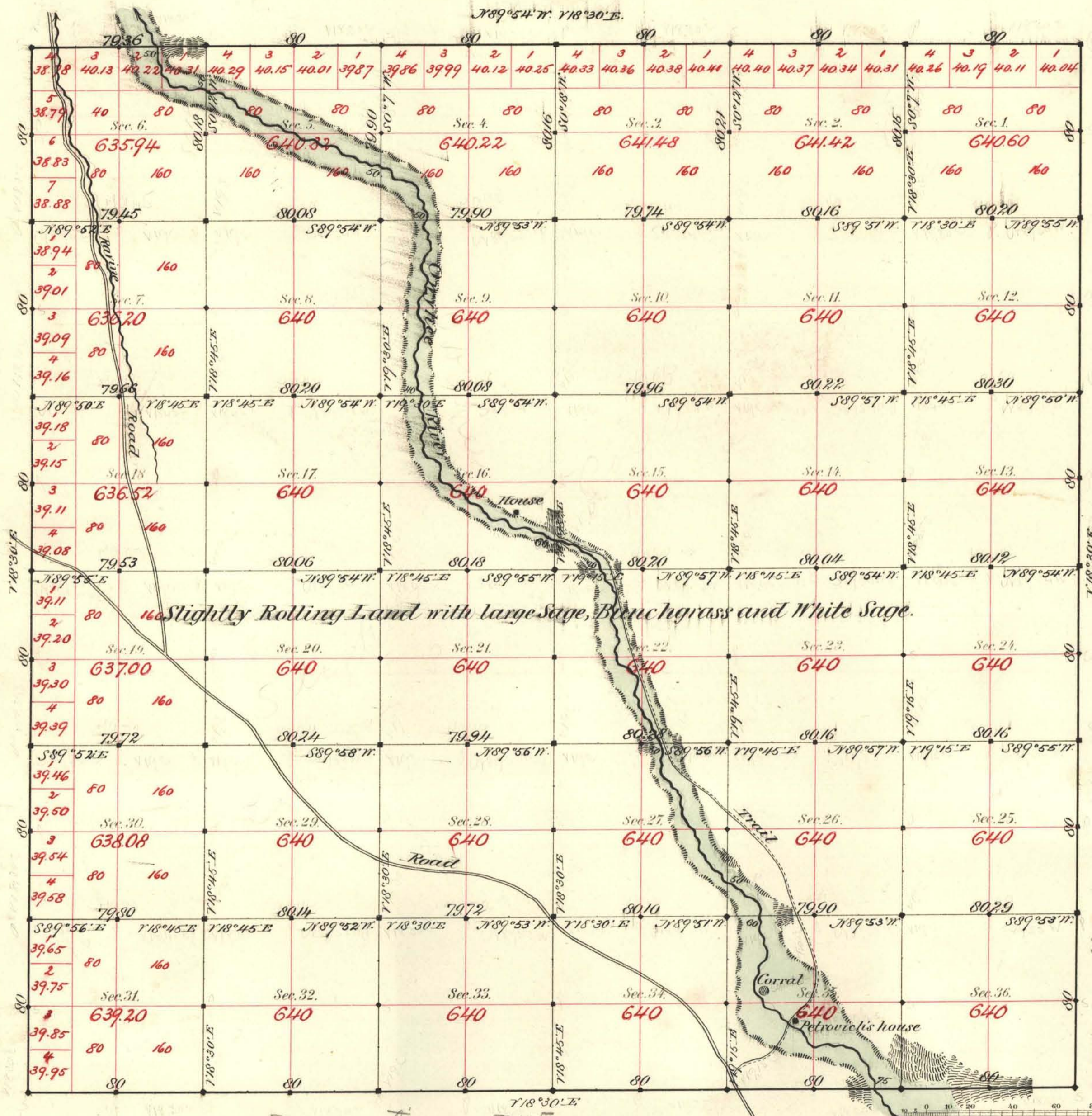


TOWNSHIP N^o 46 NORTH RANGE N^o 48 EAST MOUNT DIABLO MERIDIAN



Aggregate Area of Public Land surveyed 23026.98 Acres.

Slightly Rolling Land with large Sage, Brushgrass and White Sage.

Commenced Sept. 3rd 1882
Completed " 8th "

Subdivisions not noted run with a variation of 19' East.

For connections see T 45

Surveys Designated	By Whom Surveyed	Date of Contract	Amount of Surveys	When Surveyed
Highway	Patrick Smyke	July 25 th 1882	23-79-36	1882
Subdivisions	"	"	60-01-13	Sept. "

119 Corr.
153

The above Map of Township N. 46 North of Range N. 48 East of Mount Diablo Meridian is strictly conformable to the field notes of the survey thereof on file in this Office, which have been examined and approved.

Surveyor General's Office,
Reno, Nevada
December 28th 1882

D. S. Davis
Sur. Gen. Nevada