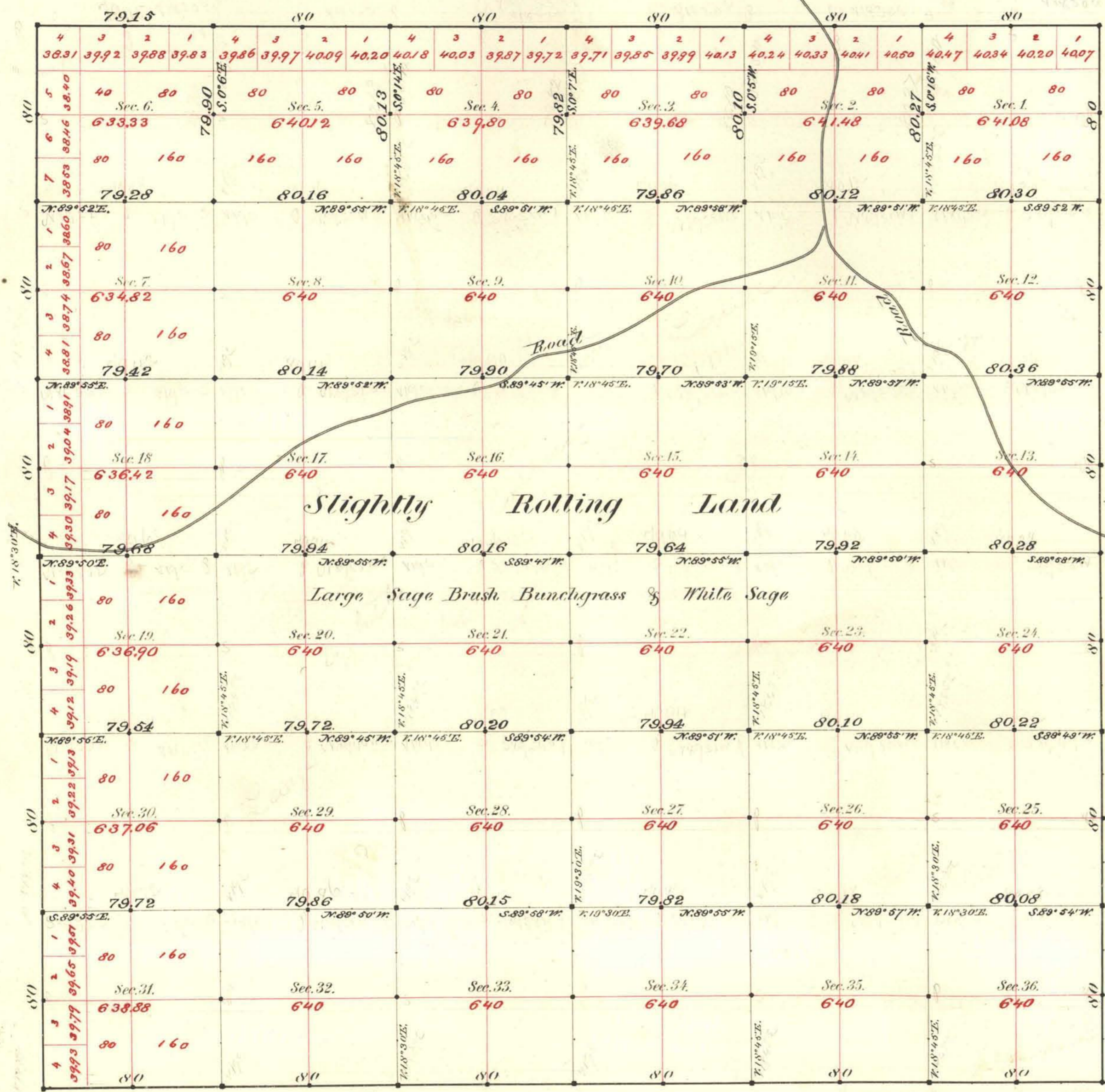


TOWNSHIP N^o 46 NORTH RANGE N^o 47 EAST MOUNT DIABLO MERIDIAN

S.89° 51' W. T. 18° 30' E.



Aggregate Area of Public Land Surveyed 23019.57

Commenced Sept 13th 1882
Completed 18th "

Subdivisions not noted run with a Var. 19° East

For connections see T 45 T. 18° 30' E.

Scale 40 Chains to an Inch.

Survey Designated	By Whom Surveyed	Date of Contract	Amount of Survey	When Surveyed
Township lines	Fitzpatrick & Smyth	July 25 th 1882	23 ^{ch} 79-75	1882
Section	"	"	59-78-53	Sept.

N^o Cor.
153

The above Map of Township N^o 46 North of Range N^o 47 East
Mt. Diablo Meridian is strictly conformable to the field
notes of the survey thereof on file in this Office, which have been examined and approved.
Surveyor General's Office, }
Nevada }
December 28th 1882 }
D. S. Davis
Sur. Gen. Nevada