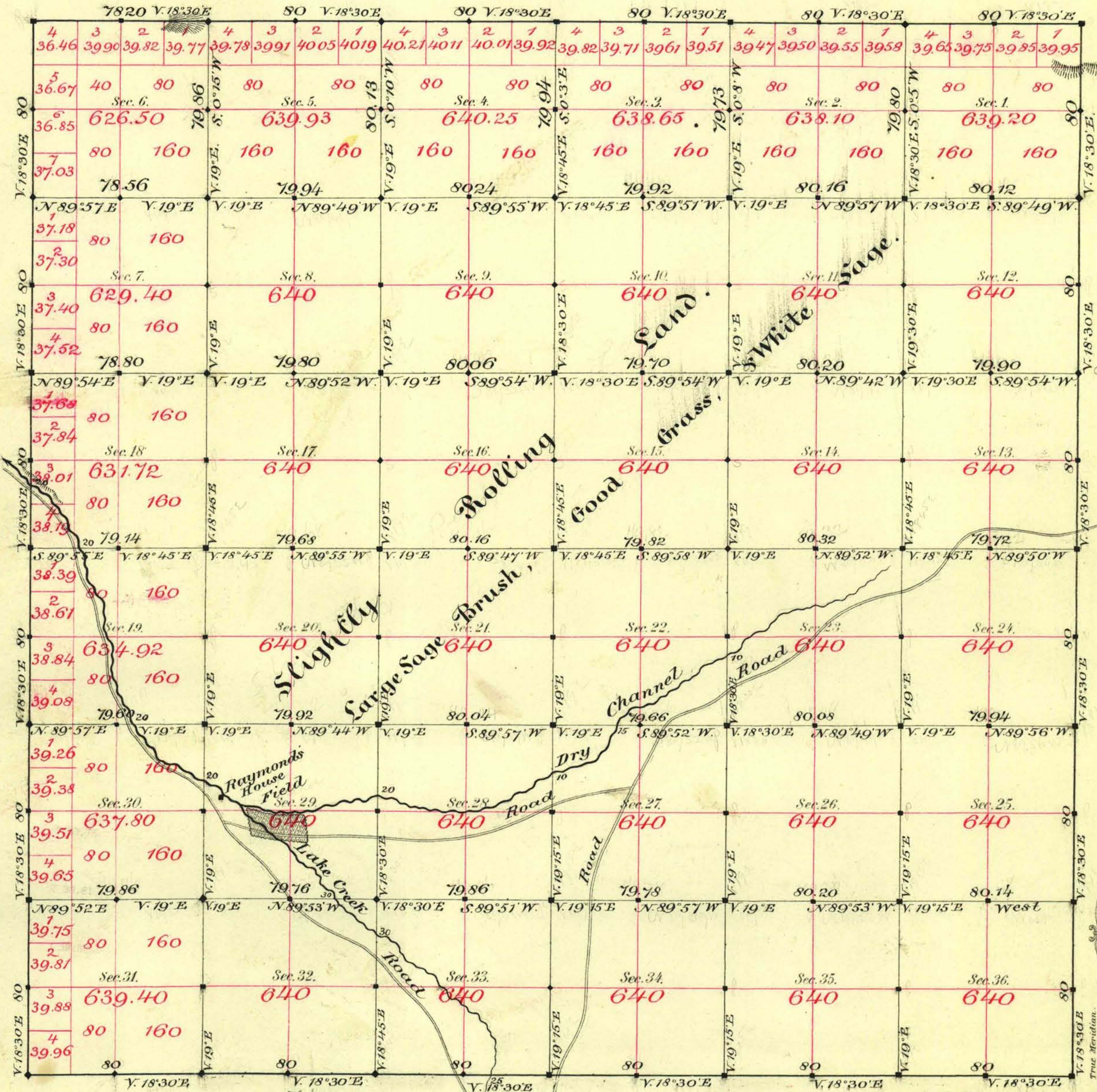


TOWNSHIP N<sup>o</sup> 46 NORTH RANGE N<sup>o</sup> 46 EAST MOUNT DIABLO MERIDIAN

S. 89° 53' W.



Aggregate Area of Public land surveyed 22,995.87 Acres

Commenced September 1<sup>st</sup> 1882  
Completed " 6<sup>th</sup> "

For connections see T 45

Survey Designated	By Whom Surveyed	Date of Contract	Amount of Surveys	When Surveyed
Township lines	Fitzpatrick & Smyles	July 25 <sup>th</sup> 1882	M 23 Ch 78 130	1882
Section			59 74 54	Sept.

7<sup>th</sup> Cont  
153

The above Map of Township N<sup>o</sup> 46 North of Range N<sup>o</sup> 46 East, Mount Diablo Meridian is strictly conformable to the field notes of the survey thereof on file in this Office, which have been examined and approved.

Surveyor General's Office,  
Reno, Nevada  
December 28<sup>th</sup> 1882

*D. S. Davis*  
Sur. Gen. Nevada.

A. L. Bancroft & Co. Lith. S. F.