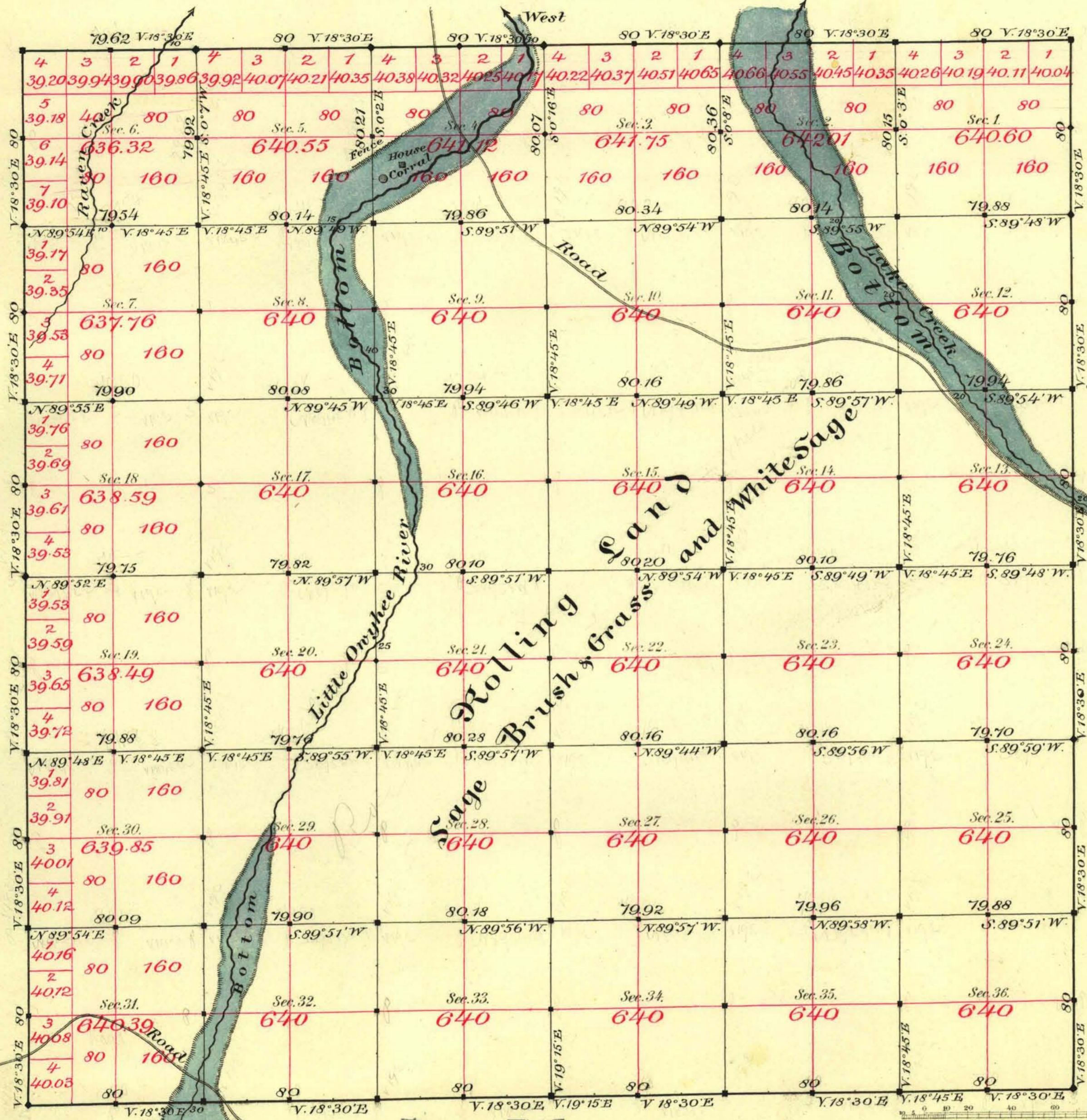


TOWNSHIP N^o 46 NORTH RANGE N^o 45 EAST MOUNT DIABLO MERIDIAN



Aggregate Area of Public Lands surveyed 23,037.43 Acres

Commenced August 20th 1882
Completed " 25th "

Subdivision not noted run with a Variation of 19° East.

For connections see T45

Surveys Designated	By Whom Surveyed	Date of Contract	Amount of Surveys	When Surveyed
Township Lines	Fitzpatrick & Singler	July 25 th 1882	N 22° 19' 14" E 62	1882
Section			60-00-09	August

7th Con
153
"

The above Map of Township N^o 46 North of Range N^o 45 East of Mt. Diablo Meridian is strictly conformable to the field notes of the survey thereof on file in this Office, which have been examined and approved.

Surveyor General's Office,
Reno, Nevada

Decem^{ber} 28th 1882

C. S. Davis
Sur. Gen. Nevada.