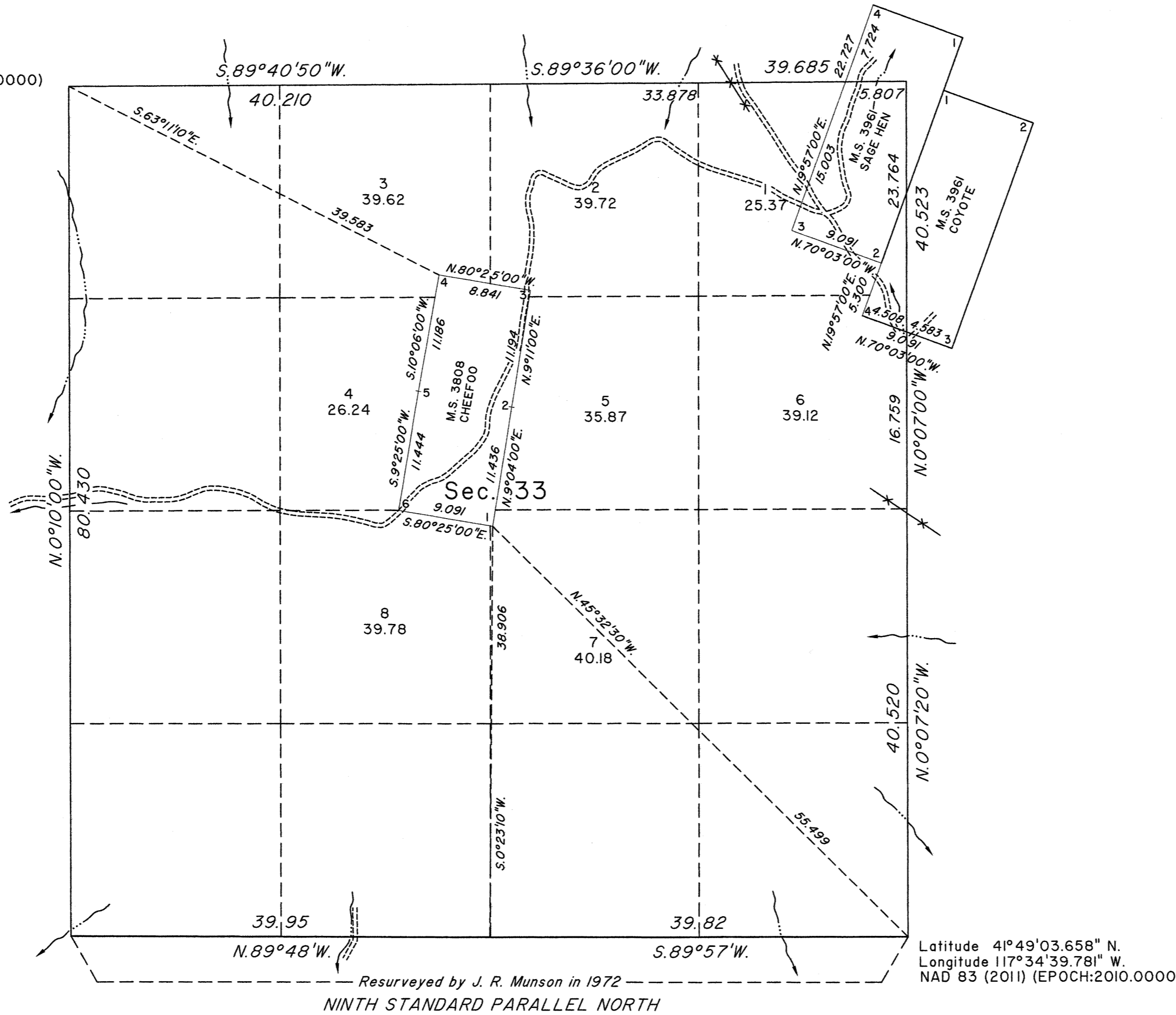
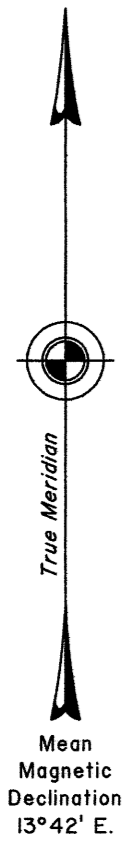


# TOWNSHIP 46 NORTH, RANGE 39 EAST, OF THE MOUNT DIABLO MERIDIAN, NEVADA

## DEPENDENT RESURVEY

Latitude 41°49'56.159" N.  
Longitude 117°35'49.561" W.  
NAD 83 (2011) (EPOCH:2010.0000)



A history of surveys is contained in the field notes.

This plat represents the dependent resurvey of a portion of the subdivisional lines, Mineral Survey No. 3808 and portions of Mineral Survey No. 3961 designed to restore the corners in their true original locations according to the best available evidence, Township 46 North, Range 39 East, Mount Diablo Meridian, Nevada.

Except as indicated hereon, the lottings and areas are as shown on the plat approved July 25, 1882.

Survey executed by Brandon K. Grace, Cadastral Surveyor, beginning January 14, 2015 and completed January 18, 2015, pursuant to Special Instructions dated December 18, 2014, for Group No. 939, Nevada.

UNITED STATES DEPARTMENT OF THE INTERIOR  
BUREAU OF LAND MANAGEMENT

Reno, Nevada March 2, 2015

This plat is strictly conformable to the approved field notes, and the survey, having been correctly executed in accordance with the requirements of law and the regulations of this Bureau, is hereby accepted.

For the Director

Chief Cadastral Surveyor for Nevada

