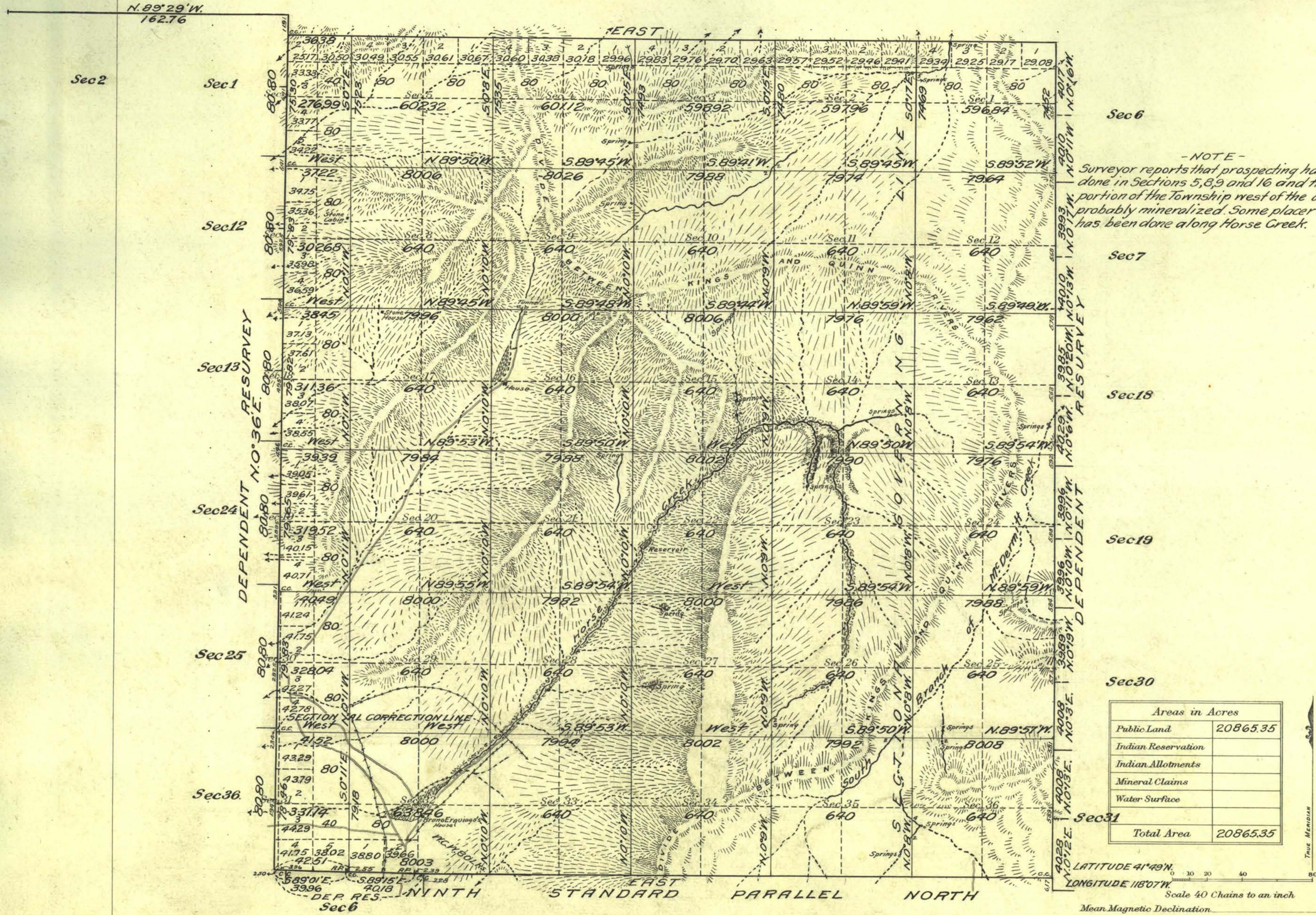


Township N° 46 North Range N° 34 East M^t Diablo Meridian, Nevada



- NOTE -
 Surveyor reports that prospecting has been done in Sections 5, 8, 9 and 16 and that the portion of the Township west of the divide is probably mineralized. Some placer mining has been done along Horse Creek.

Areas in Acres	
Public Land	20865.35
Indian Reservation	
Indian Allotments	
Mineral Claims	
Water Surface	
Total Area	20865.35

Surveys Designated	By Whom Surveyed	Group		Amount of Surveys			When Surveyed	
		No.	Date	Mls.	chs.	Dcs.	Begun	Completed
North Boundary	Walter H Good	110	April 13, 1923	5	36	38	Sept. 17, 1923	Oct. 13, 1923
East Boundary Depries	U.S. Transitman			6	00	69	Sept. 17, 1923	Sept. 18, 1923
9 th St Par N. Depries				1	04	81	Sept. 8, 1923	Sept. 12, 1923
9 th St Par North				4	37	73	Sept. 12, 1923	Sept. 29, 1923
West Boundary Depries				6	04	80	Oct. 7, 1923	Oct. 13, 1923
Subdivisions				57	09	15	Sept. 12, 1923	Oct. 12, 1923

The above map of Township No. 46 North Range No. 34 East of the M^t Diablo Meridian Nevada is strictly conformable to the field notes of the survey thereof on file in this office, which have been examined and approved.

U. S. Surveyor General's Office.
 Reno, Nevada, February 13, 1925

J. E. Elden
 Surveyor General.