

TOWNSHIP 46 NORTH, RANGE 33 EAST, OF THE MOUNT DIABLO MERIDIAN, NEVADA  
DEPENDENT RESURVEY AND SUBDIVISIONS

Sec. 24

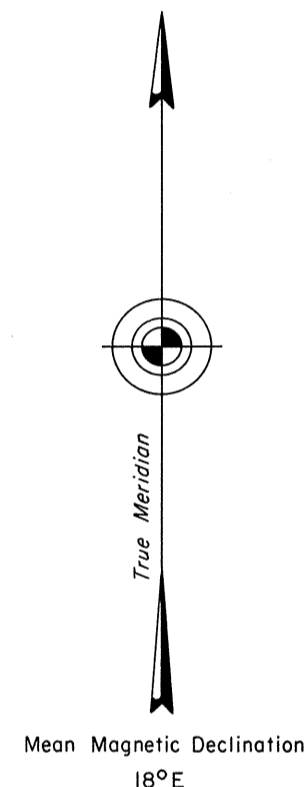
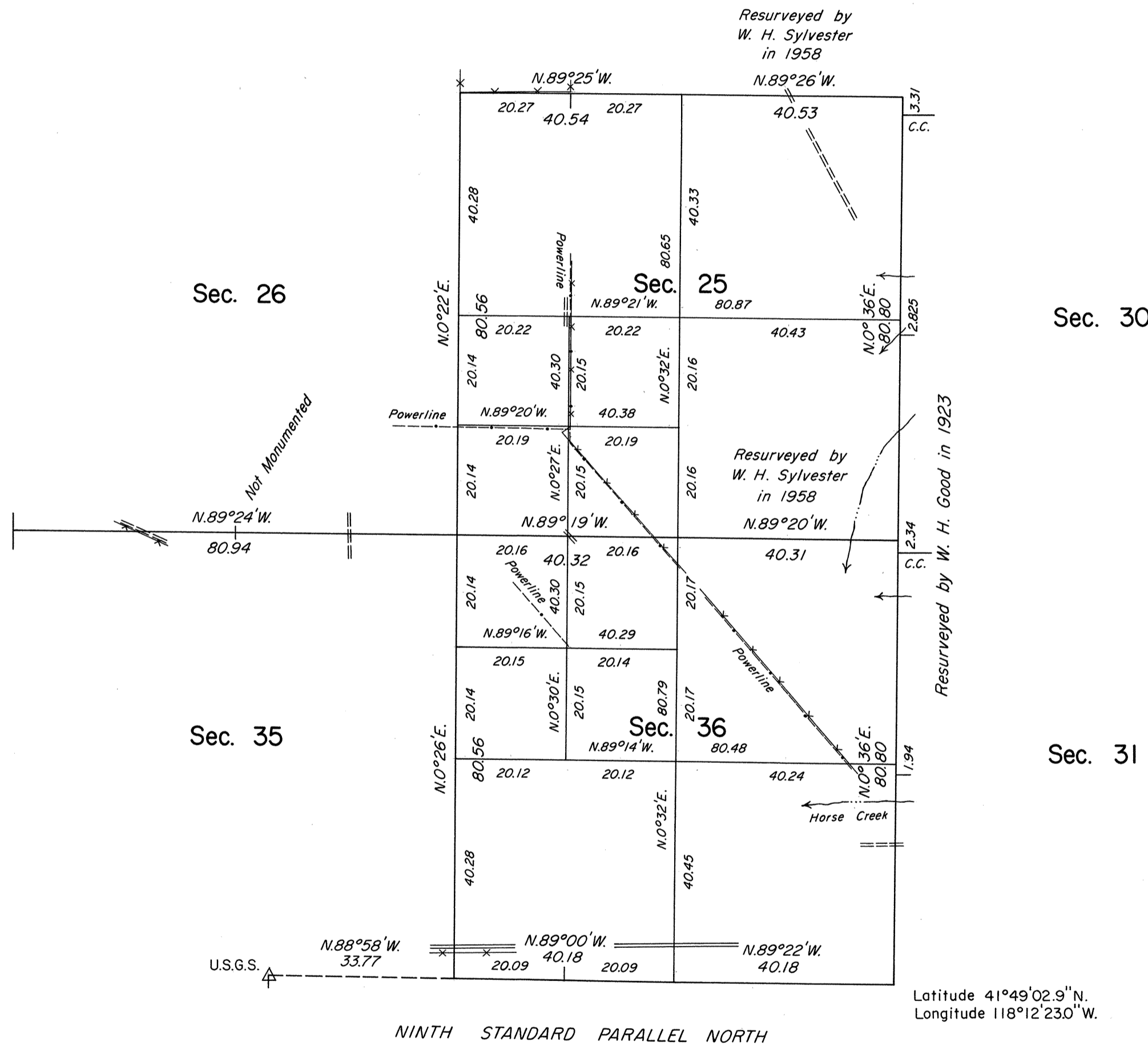
Resurveyed by  
W. H. Sylvester  
in 1958

History of surveys is contained in the field notes.

This plat represents a dependent resurvey of a portion of R. 33 E., and a portion of the subdivisional lines of T. 46 N., R. 33 E., designed to restore the corners in their true original locations according to the best available evidence; and the survey of the subdivision of certain sections in T. 46 N., R. 33 E.

Lottings and areas are as shown on plats approved March 25, 1874 and April 26, 1960.

Survey executed by Neil R. Forsyth and Ronald E. Williams, Cadastral Surveyors, beginning May 21, 1981 and completed May 29, 1981, under Special Instructions dated March 16, 1981, for Group No. 591, Nevada.



UNITED STATES DEPARTMENT OF THE INTERIOR  
BUREAU OF LAND MANAGEMENT

Reno, Nevada

May 5, 1983

This plat is strictly conformable to the approved field notes, and the survey, having been correctly executed in accordance with the requirements of law and the regulations of this Bureau, is hereby accepted.

For the Director

*Laurel E. Bland*

Acting Deputy State Director, Operations

