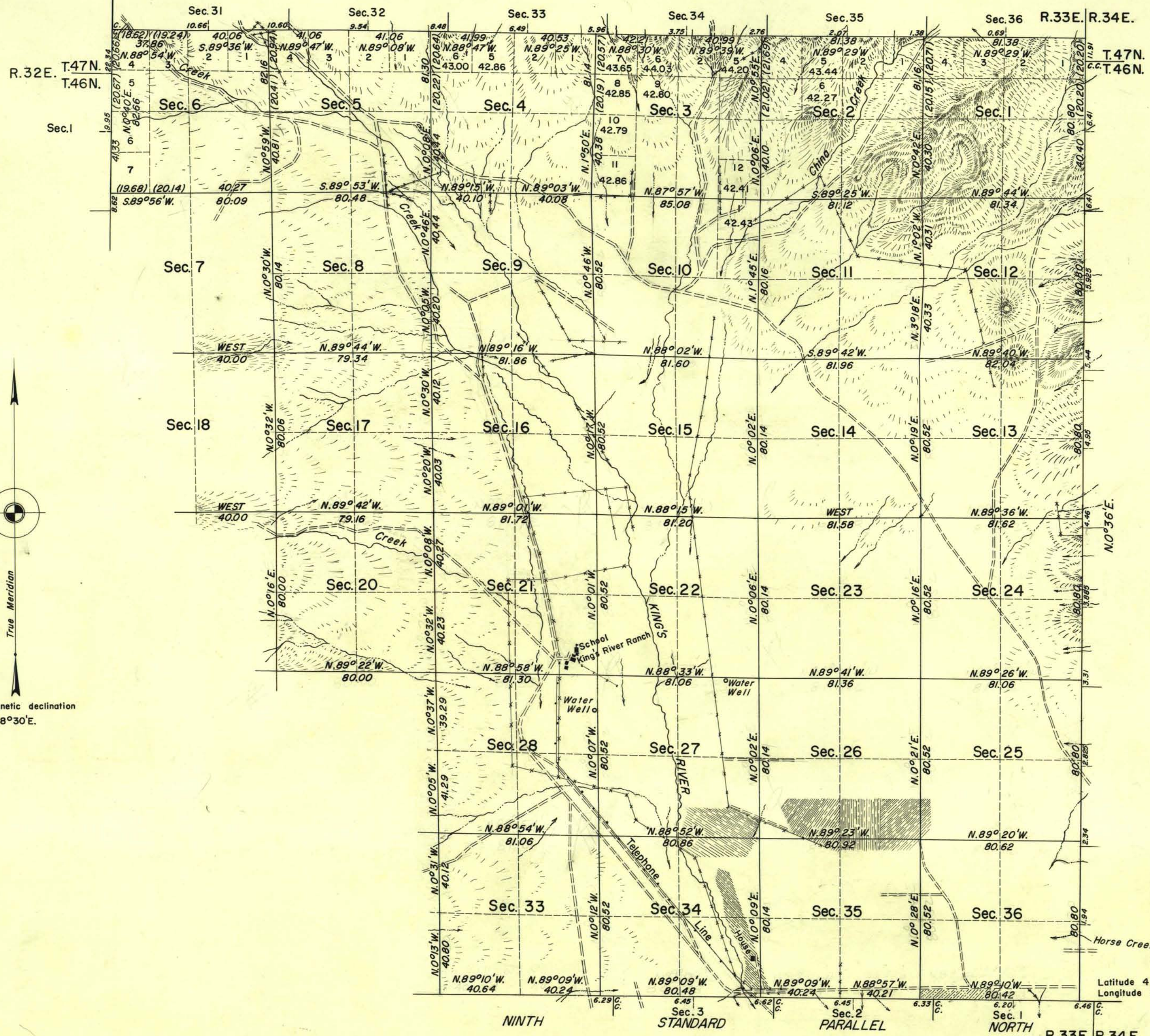


TOWNSHIP 46 NORTH, RANGE 33 EAST, OF THE MOUNT DIABLO MERIDIAN, NEVADA

DEPENDENT RESURVEY



True Meridian
 Mean magnetic declination
 18° 30' E.

History of earlier surveys is contained in the field notes.

This plat represents a dependent resurvey of a portion of the subdivisional lines of T. 46 N., R. 33 E., Mount Diablo Meridian, Nevada, designed to restore the corners in their original locations according to the best available evidence; except as shown hereon, lottings and areas are as shown on plat approved March 25, 1874.

Survey executed by Woodrow H. Sylvester August 12 to September 15, 1958 under special instructions dated September 19, 1957 and supplemental special instructions dated April 29, 1958 for Group 370, Nevada.

UNITED STATES DEPARTMENT OF THE INTERIOR
 BUREAU OF LAND MANAGEMENT
 Washington, D.C. April 26, 1960

This plat is strictly conformable to the approved field notes, and the survey, having been correctly executed in accordance with the requirements of law and the regulations of this Bureau, is hereby accepted.

For the Director

Donald Clement

Cadastral Engineering Staff Officer

Scale in Chains
 Area Resurveyed, 19,249.48 Acres

Latitude 41° 47' 40" N.
 Longitude 118° 12' 20" W.

R. 33 E. R. 34 E.
 T. 45 N.

0955 a

T. 46 N. R. 33 E.