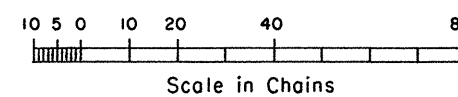
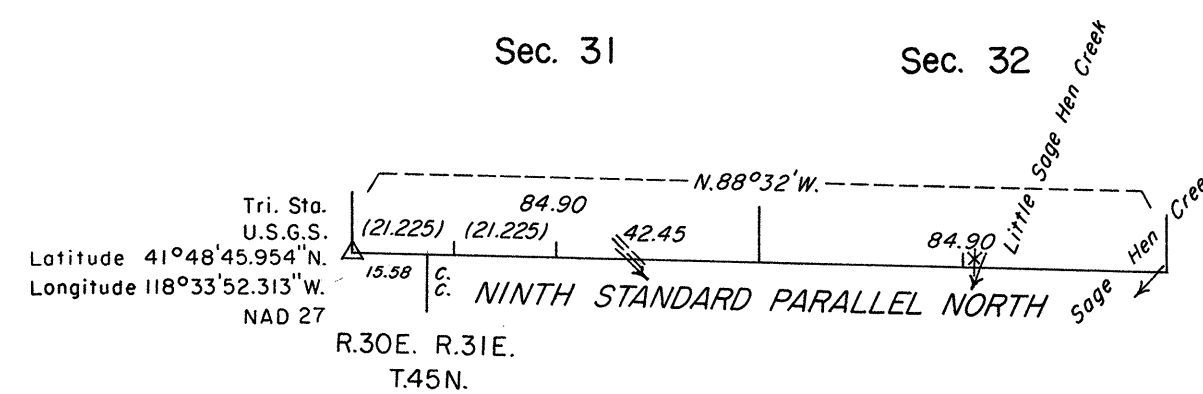
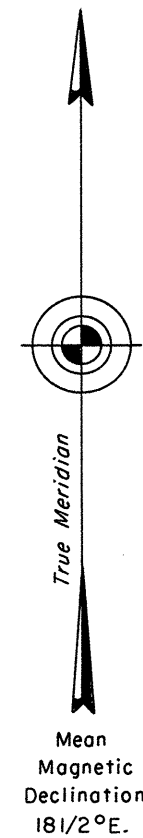


TOWNSHIP 46 NORTH, RANGE 31 EAST, OF THE MOUNT DIABLO MERIDIAN, NEVADA
DEPENDENT RESURVEY

History of the earlier surveys is contained in the field notes.

This plat represents the dependent resurvey of the Ninth Standard Parallel North, through a portion of Range 31 East, Mount Diablo Meridian, Nevada, designed to restore the corners in their true original locations according to the best available evidence.

Survey executed by Robert A. Pratt, Cadastral Surveyor, beginning May 29, 1991 and completed July 23, 1991, under Special Instructions dated July 22, 1991, for Group No. 704, Nevada.



UNITED STATES DEPARTMENT OF THE INTERIOR
BUREAU OF LAND MANAGEMENT

Reno, Nevada September 28, 1992

This plat is strictly conformable to the approved field notes, and the survey, having been correctly executed in accordance with the requirements of law and the regulations of this Bureau, is hereby accepted.

For the Director

John J. Parrish

Chief Cadastral Surveyor, Nevada