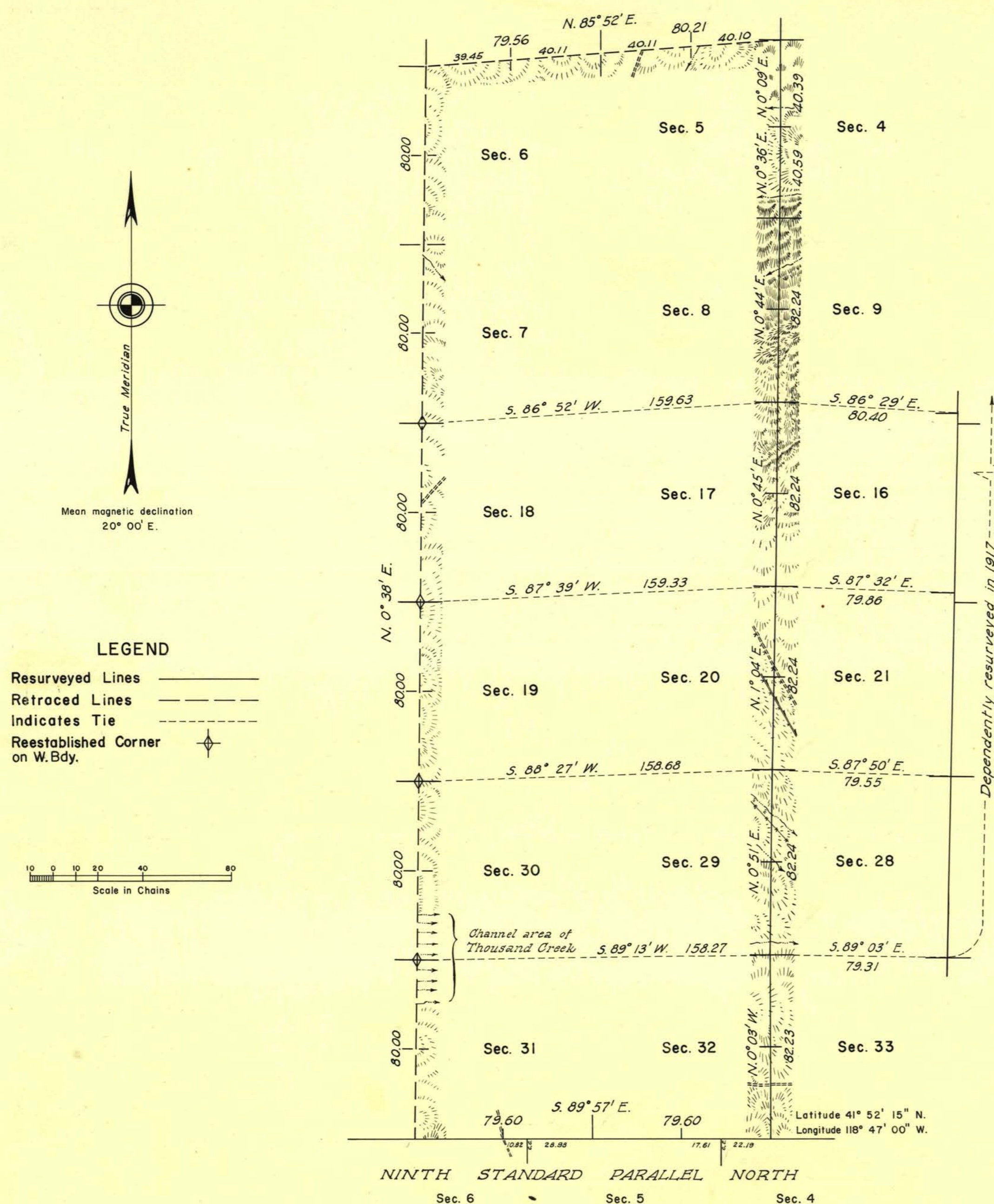


TOWNSHIP 46 NORTH, RANGE 28 EAST, OF THE MOUNT DIABLO MERIDIAN, NEVADA. RETRACEMENT AND RESURVEY.



This plat represents a dependent resurvey of the 4th meridional line and a portion of the south boundary designed to restore all corners in their true original locations according to the best available evidence and a retracement and reestablishment of a portion of the north and west boundaries.

The west and south boundaries and the west three (3) ranges of sections were surveyed by Hatch, Skinner, and Preble in 1874. The west two (2) miles of the south boundary (9th Standard Parallel South) was dependently resurveyed by Philip L. Inch in 1940.

The retracement and partial reestablishment of the west boundary, the west two (2) miles of the north boundary and the dependent resurvey of the 4th meridional line and a portion of the south boundary executed by Philip L. Inch September 23 to October 25, 1940 under special instructions dated August 1, 1940 for Group 310, Nevada.

UNITED STATES DEPARTMENT OF THE INTERIOR
BUREAU OF LAND MANAGEMENT
Washington, D. C. August 29, 1955

This plat is strictly conformable to the approved field notes, and the survey, having been correctly executed in accordance with the requirements of law and the regulations of this Bureau, is hereby accepted.

For the Director
Earl G. Harrington
Cadastral Engineering Staff Officer

13

T46N, R28E

0668-a