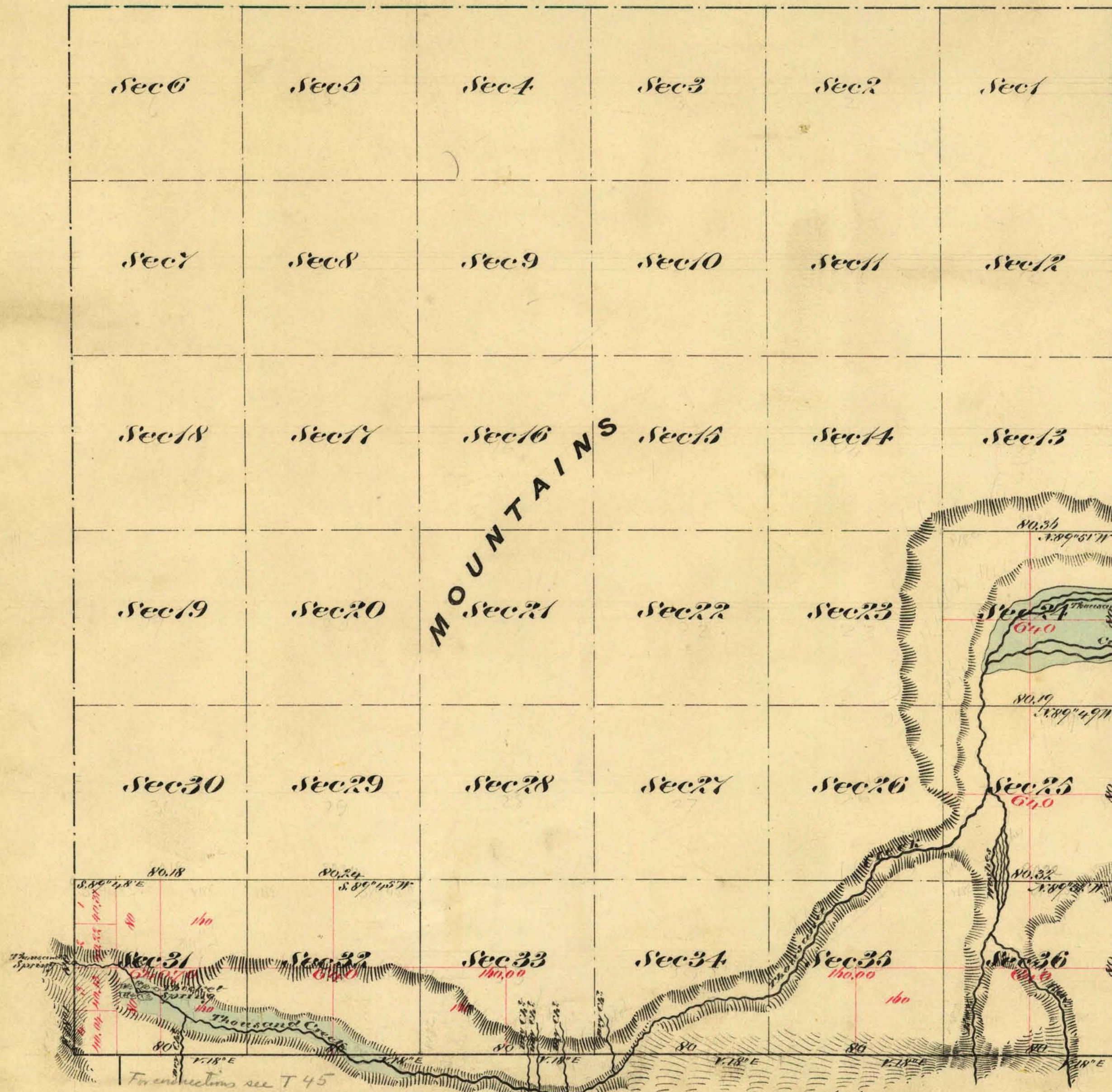


Township N^o 46 North

Range N^o 26 East

Mount Diablo Meridian



Aggregate Area of Public Land (Surveyed) 3,520.70 Acres
 Estimated " " Mountains (unsurveyed) 19,510.40 "
 Aggregate 23,031.10 "

Commenced September 26th 1874
 Completed September 27th 1874

Subdivision lines not otherwise noted run with a variation of 15° E

The above Map of Township N^o 46 North Range N^o 26 East Mount Diablo Meridian is strictly conformable to the field notes of the surveys thereof on file in this Office, which have been examined and approved
 W. S. Surveyor General's Office
 Virginia City Nevada
 October 14th 1874

Surveys Designated	By Whom Surveyed	Date of Contract	Am ^t of Survey	When Surveyed	Acres.
Township Lines	A. Hatch W. W. Skinner & C. B. Bell	July 25 th 1874	10 00 00	1874	64
Subdivision Lines	" " " " " "	" " " "	10 00 29	September 1874	"

0573

T 46 N, R 26 E.

E. S. Davis
 W. S. Surveyor General Nevada