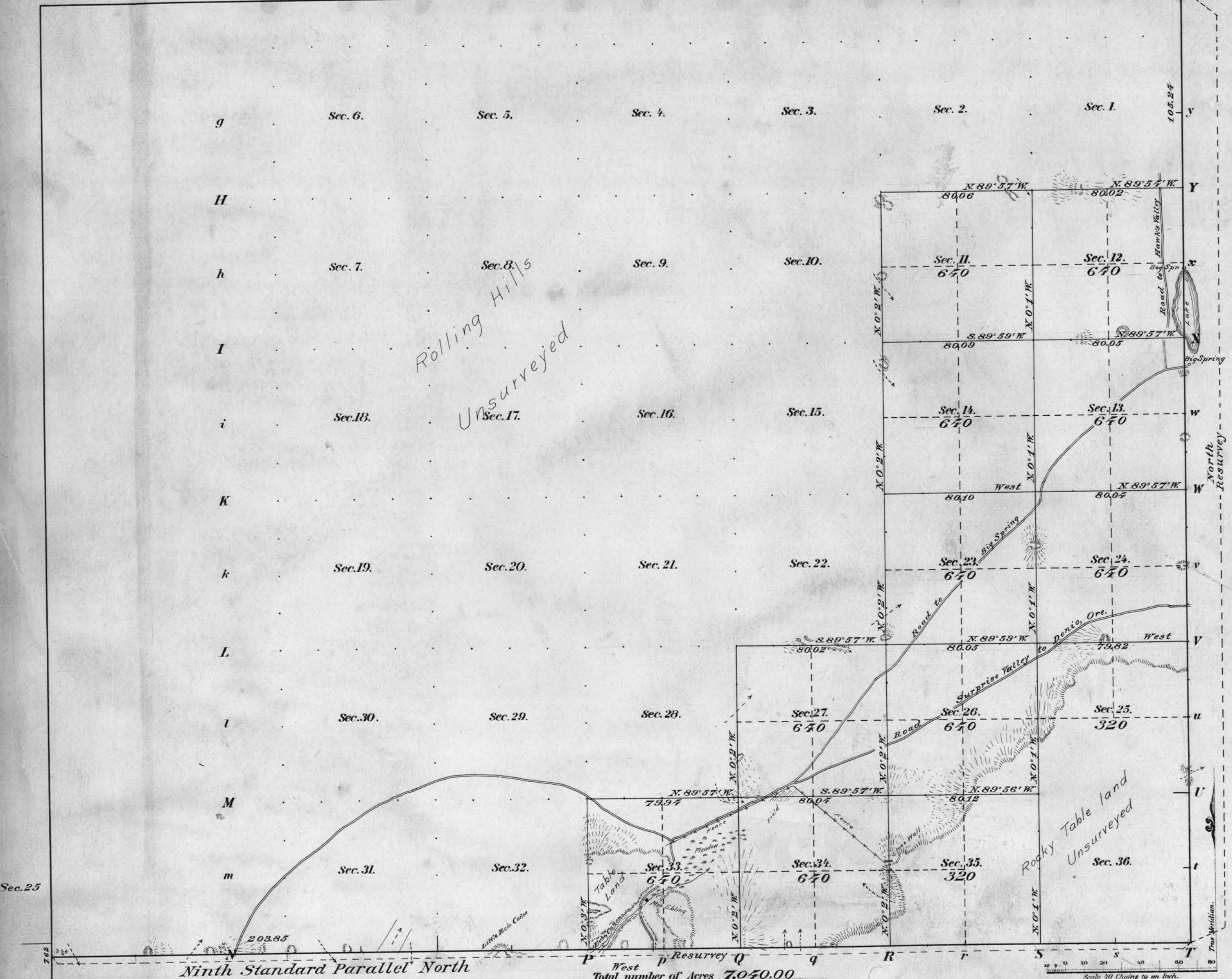


Township N<sup>o</sup> 46 N. Range N<sup>o</sup> 27 E. M<sup>t</sup> Diablo Meridian Nevada  
Sec. 36 1023 Sec. 31



Meanders of							
Posts	Courses	Ch <sup>2</sup> Lk <sup>2</sup>	Posts	Courses	Ch <sup>2</sup> Lk <sup>2</sup>	Posts	Courses

Latitude 41° 51' N.  
Longitude 119° 11' W.  
Mag Decl. 20° E.

Total number of Acres **7,040.00**

Surveys Designated	By Whom Surveyed	Contract No.	Date	Amount of Surveys M. Ch. Lk.	When Surveyed
RESURV Township lines	Albert C. Horton	256	Jan 3, 1908	6 25 24	Mar 21-25, 1908
RESURV Subdivisions	"	"	"	25 0 35	Mar 30-Apr 7, "
RESURV 9th St. Par. N	"	"	"	7 43 85	Mar 26-29 "
RESURV Connections	"	"	"	0 17 85	"
Old Work (W. Bdy)	Benson & Putnam	103	Nov 23, 1880		1881
" (N. Bdy)	F. B. Monree	172	Aug 23, 1884		1884

The above Map of Township N<sup>o</sup> 46 N. of Range N<sup>o</sup> 27 E. M<sup>t</sup> Diablo Meridian, Nevada, is studly conformable to the field notes of the survey thereof on file in this Office, which have been examined, and approved.  
Surveyor General's Office.  
Reno, Nevada, Dec. 7, 1909

*Matthew Ryle*  
Sur. Gen!