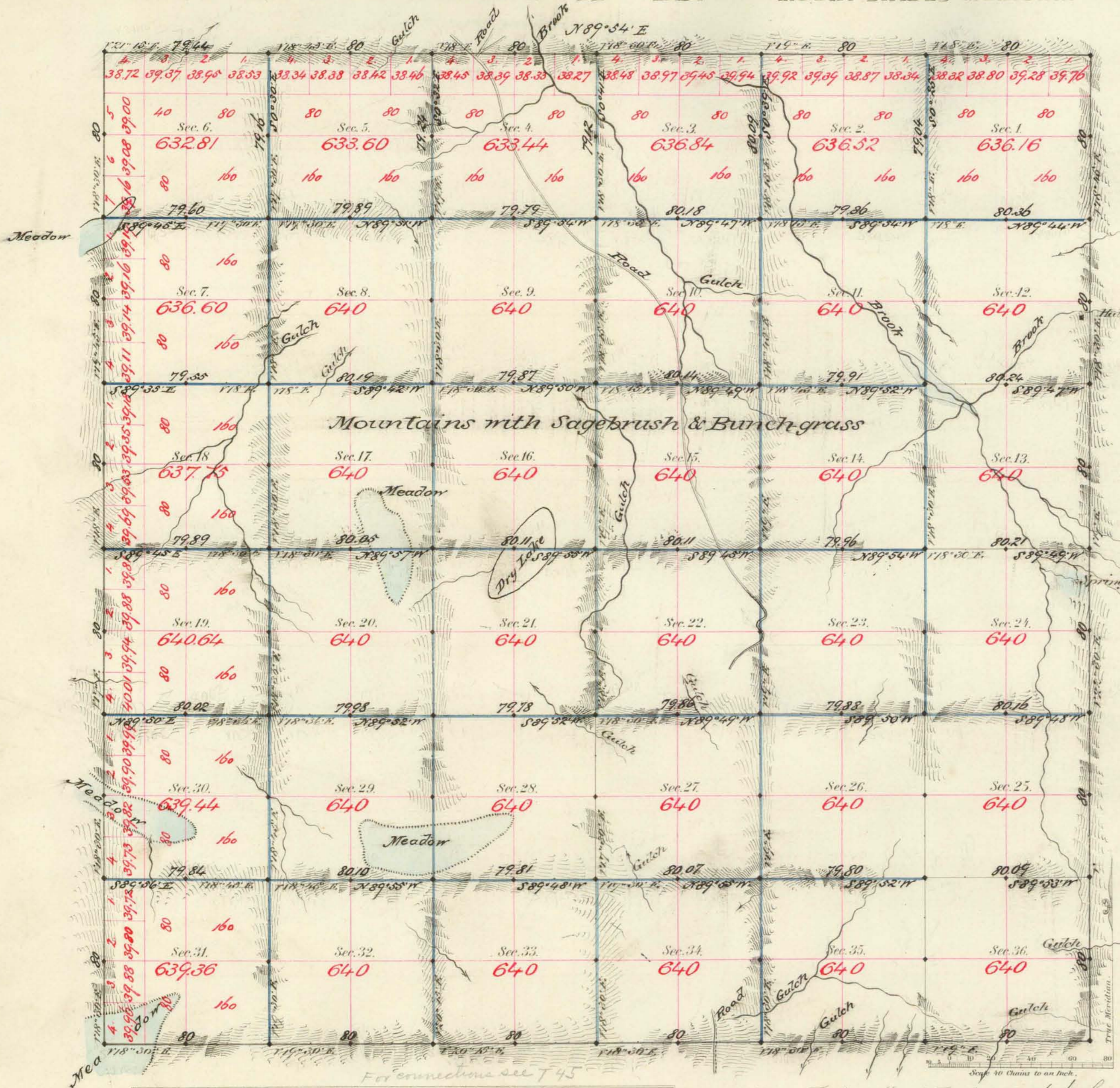


TOWNSHIP N^o 46 NORTH RANGE N^o 22 EAST MOUNT DIABLO MERIDIAN



Aggregate Area of Public Land Surveyed 23,002.16 ac.

Commenced Feb. 7th 1881
Completed " 12th "

Subdivisions not otherwise noted run with a Var of 10° East

Surveys Designated	By Whom Surveyed	Date of Contract	Amount of Surveys	When Surveyed
Township line	Dinwiddie & Robinson	Dec. 27 th 1880	36 - 36 - 36	1881
Subdivisions back of	"	"	6 - 00 - 34	Feb. 1881
Aug 10	"	"	33 - 70 - 41	"

7th Cont
103
103
1

The above Map of Township N^o 46 North of Range N^o 22 East
Mt Diablo Meridian is strictly conformable to the field
notes of the survey thereof on file in this Office, which have been examined and approved.
Surveyor General's Office,
Virginia City Nev.
March 17th 1881
C. S. Davis
Sur. Gen. Nev.