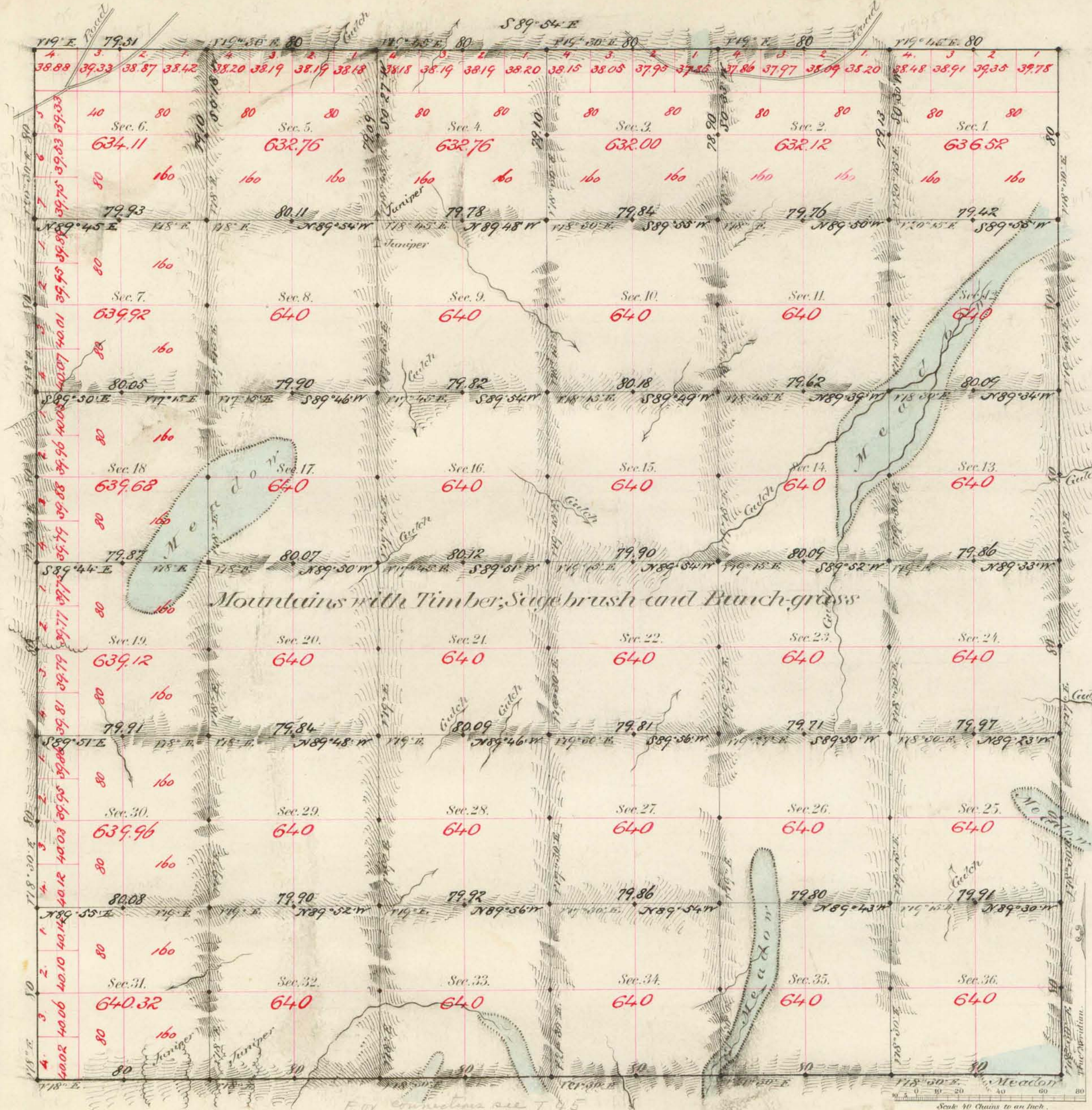


TOWNSHIP N^o 46 NORTH RANGE N^o 21 EAST MOUNT DIABLO MERIDIAN



Aggregate Area of Public Land Surveyed 22,999.27 ac.

Commenced February 9th 1881
Completed " 11th "

| Surveys Designated | By Whom Surveyed | Date of Contract | Amount of Surveys | When Surveyed |
|--------------------|---------------------|----------------------------|-------------------|---------------|
| M. L. Ledy | Dennison & Robinson | Oct. 25 th 1880 | 1/2 70 50 | 1880 |
| M. L. Ledy | " | Nov 27 th " | 17-79-51 | 1881 |
| Subdivisions 310 | " | " " | 39-72-33 | February 5 |

N^o Con/
101
103
"

The above Map of Township N^o 46 North of Range N^o 21 East
Mt Diablo Meridian is strictly conformable to the field
notes of the survey thereof on file in this Office, which have been examined and approved.
Surveyor General's Office }
Virginia City Nev. }
March 17th 1881 }
C. S. Davis
Sur. Gen. Nev.