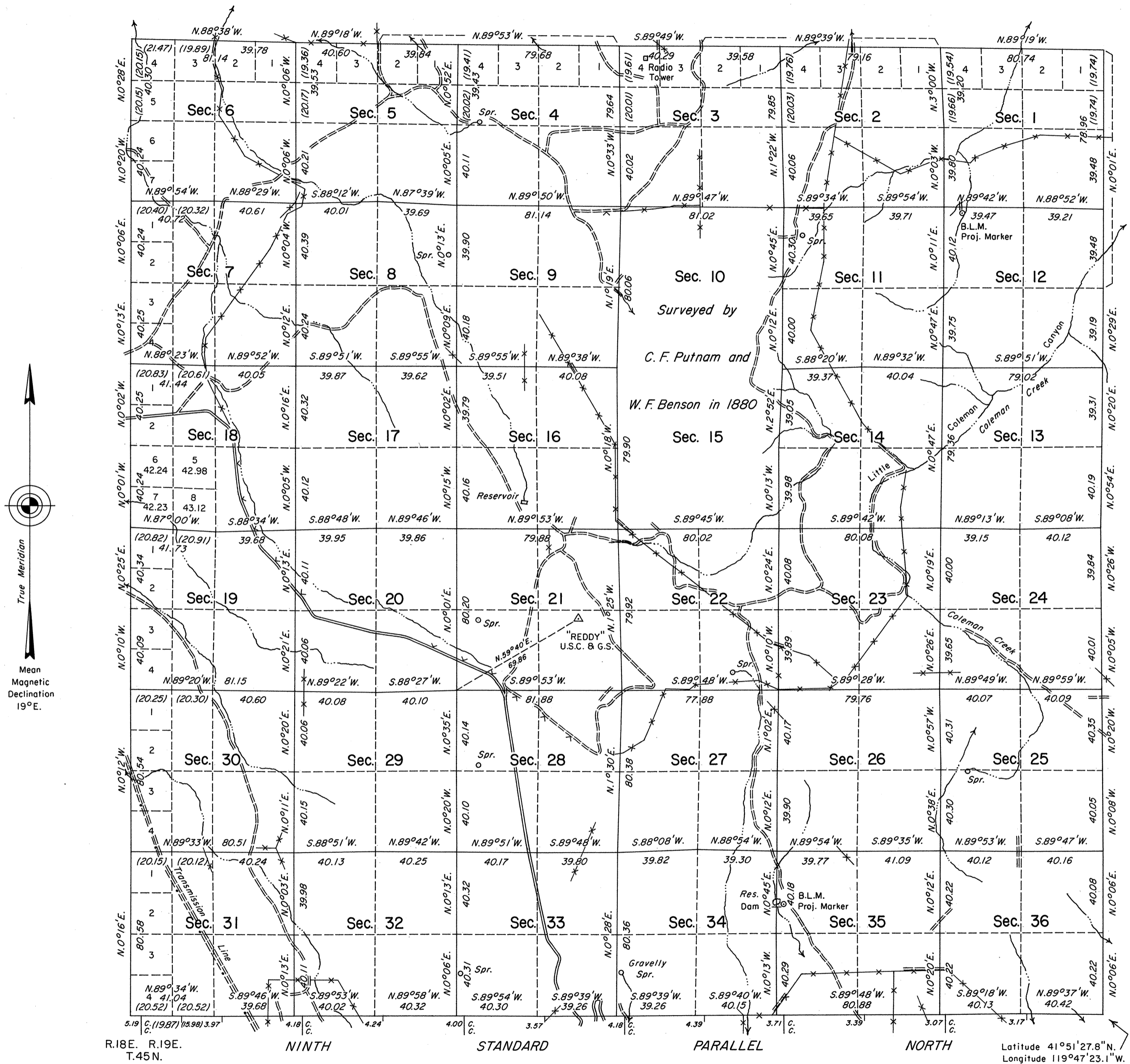


TOWNSHIP 46 NORTH, RANGE 19 EAST, OF THE MOUNT DIABLO MERIDIAN, NEVADA

DEPENDENT RESURVEY



History of the earlier surveys is contained in the field notes.

This plat represents the dependent resurvey of the Ninth Standard Parallel North, through R. 19 E., the east, west and north boundaries and a portion of the subdivisional lines of T. 46 N., R. 19 E., designed to restore the corners in their true original locations according to the best available evidence.

Lottings and areas, except as shown hereon, are as shown on the plat approved January 28, 1881.

Survey executed by Robert A. Pratt, Cadastral Surveyor, beginning September 8, 1886 and completed November 18, 1886, under Special Instructions dated August 25, 1886 for Group No. 639, Nevada.

UNITED STATES DEPARTMENT OF THE INTERIOR
BUREAU OF LAND MANAGEMENT

Reno, Nevada March 30, 1988

This plat is strictly conformable to the approved field notes, and the survey, having been correctly executed in accordance with the requirements of law and the regulations of this Bureau, is hereby accepted.

For the Director

Larcel E. Bland

Chief Cadastral Surveyor

