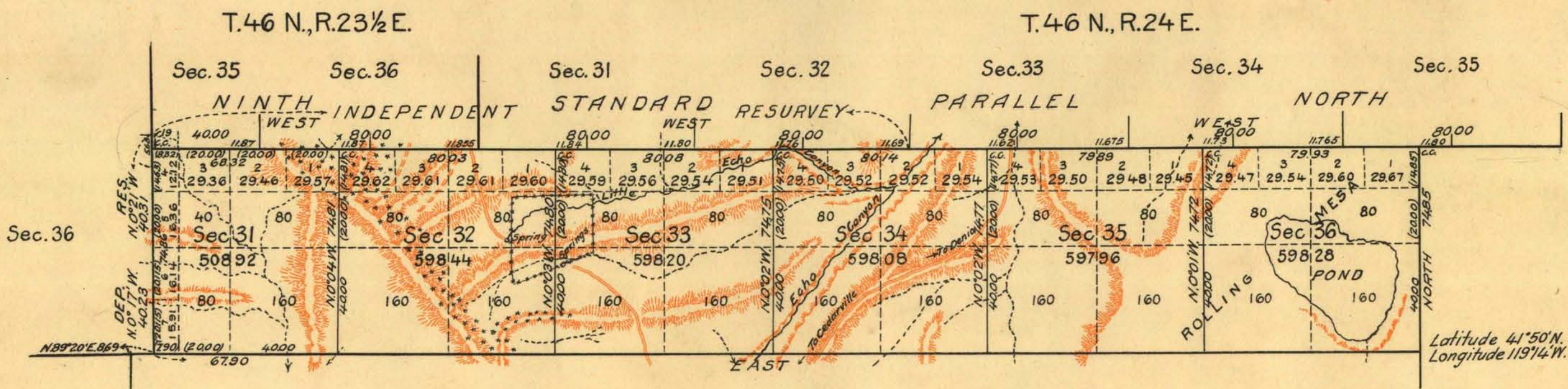
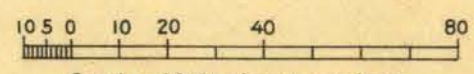


TOWNSHIP N°45½ NORTH RANGE N°24 EAST MOUNT DIABLO MERIDIAN NEVADA



South of Sec. 35
40.19 ch



Mean Magnetic Declination,

Scale: 40 Chains to an Inch.

Area Surveyed, 34,998.88 Acres.

LINES DESIGNATED	BY WHOM SURVEYED	No	GROUP DATE	MILEAGE		WHEN SURVEYED	
				MLS.	CHS.	BEGUN	COMPLETED
Exterior	N. Albert C. Horton Jr.			11	2348	Mar. 26, 1908	Mar. 29, 1908
Subdivisional	W. H. Good	134	Feb. 5, 1926	4	5385	Aug. 25, 1927	Aug. 31, 1927
Meander	" " "	"	" " "	"	"	Aug. 30, 1927	Sept. 11, 1927
Miscellaneous	" " "	"	" " "	"	"	"	"

Office of U.S. Supervisor of Surveys
 Denver, Colorado, Jan. 31, 1929.
 The above plat of Township No. 45½ North Range No. 24 East of the Mount Diablo Meridian, Nevada is strictly conformable to the field notes of the survey thereof which have been examined and approved.

Samuel Johnson
 U.S. Supervisor of Surveys.

DEPARTMENT OF THE INTERIOR
 GENERAL LAND OFFICE

Washington, D.C., February 28, 1929.
 The survey represented by this plat having been correctly executed in accordance with the requirements of law and the regulations of this office, is hereby accepted.

Wm. O. Howell
 Assistant Commissioner.

dup
1/10