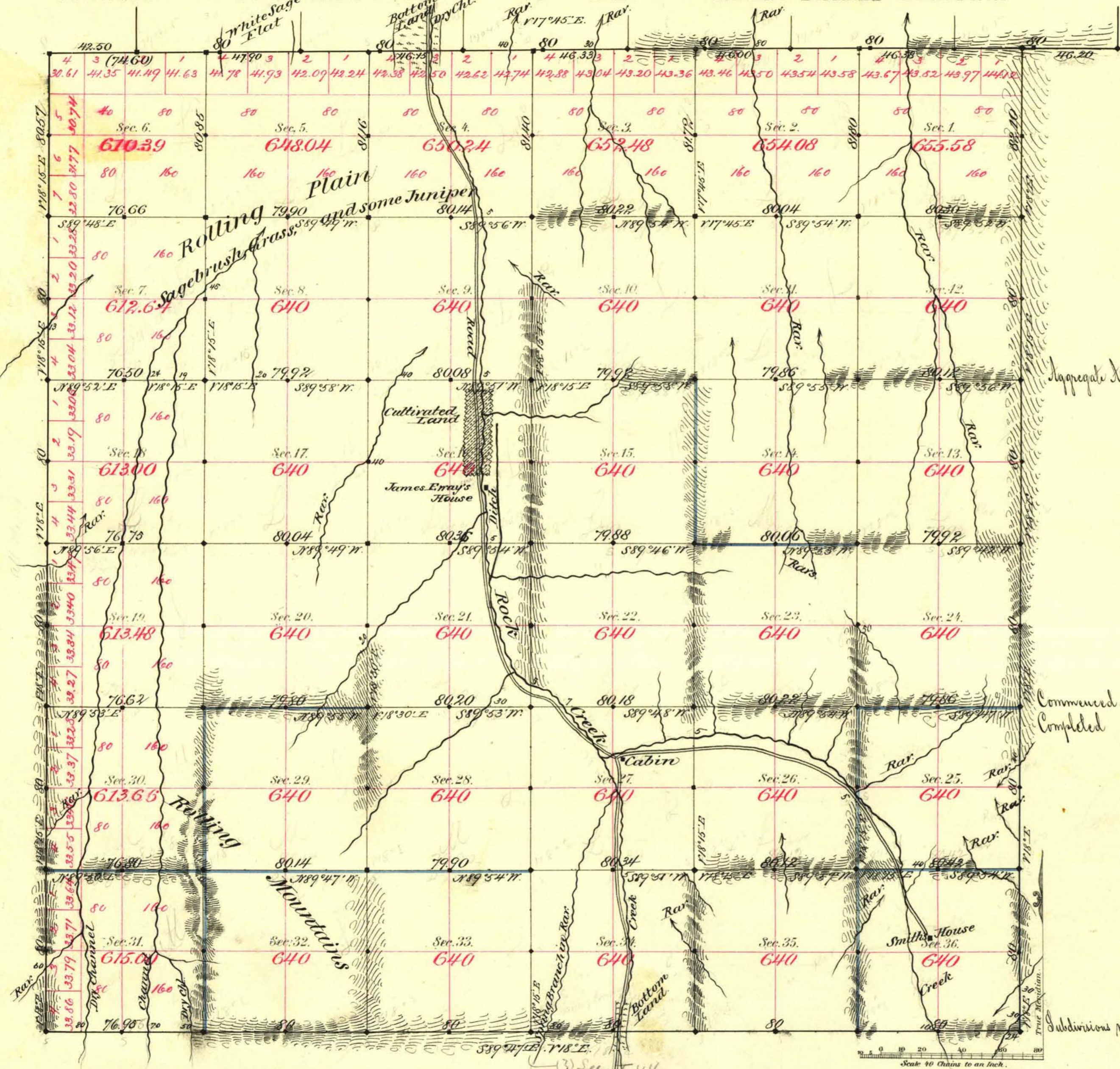


TOWNSHIP N^o 45 NORTH RANGE N^o 69 EAST MOUNT DIABLO MERIDIAN



Aggregate Area of Public Land surveyed 22938.59 Acres.

Commenced May 7th 1882.
Completed 14th

Subdivisions not ruled run with a Variation of 18° East.

Surveys Designated	By Whom Surveyed	Date of Contract	Amount of Surveys	When Surveyed
North Boundary	Reble & Thorburn	April 10 th 1882	45-50-55	1882
East	Homer & McEllan	"	17-79-62	"
Subdiv ⁿ Block	"	"	47-75-22	May
Block	"	"	11-76-98	"
Convergence	"	"	2-72-76	"

The above Map of Township N. 45 North of Range N. 69 East of Mt. Diablo Meridian is strictly conformable to the field notes of the survey thereof on file in this Office, which have been examined and approved.

Surveyor General's Office,
Reno, Nevada

W. S. Paris
Sur. Gen. Nevada

June 10th 1882