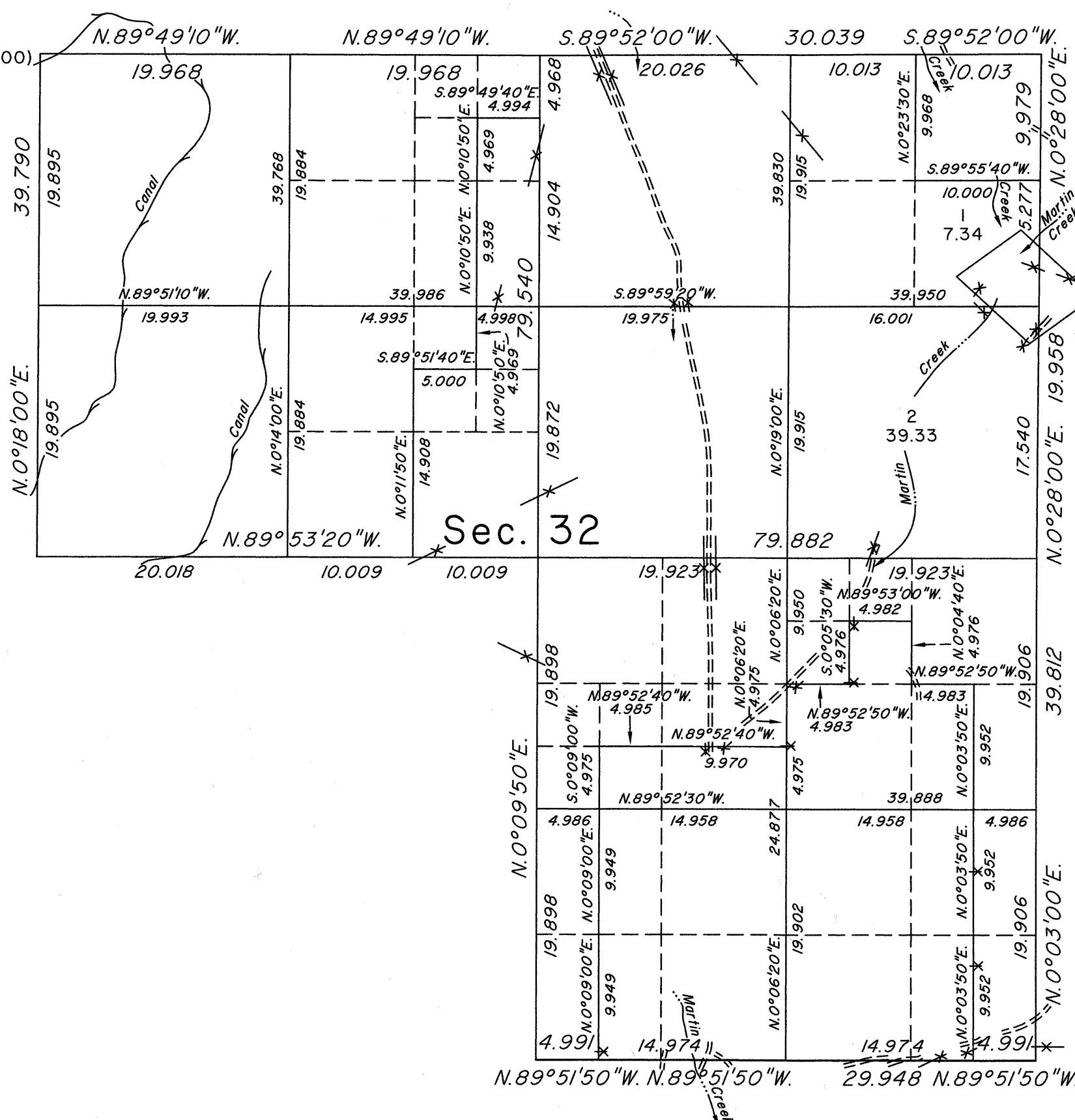
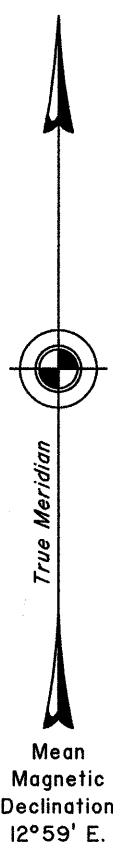


# TOWNSHIP 45 NORTH, RANGE 56 EAST, OF THE MOUNT DIABLO MERIDIAN, NEVADA

## DEPENDENT RESURVEY AND SUBDIVISION

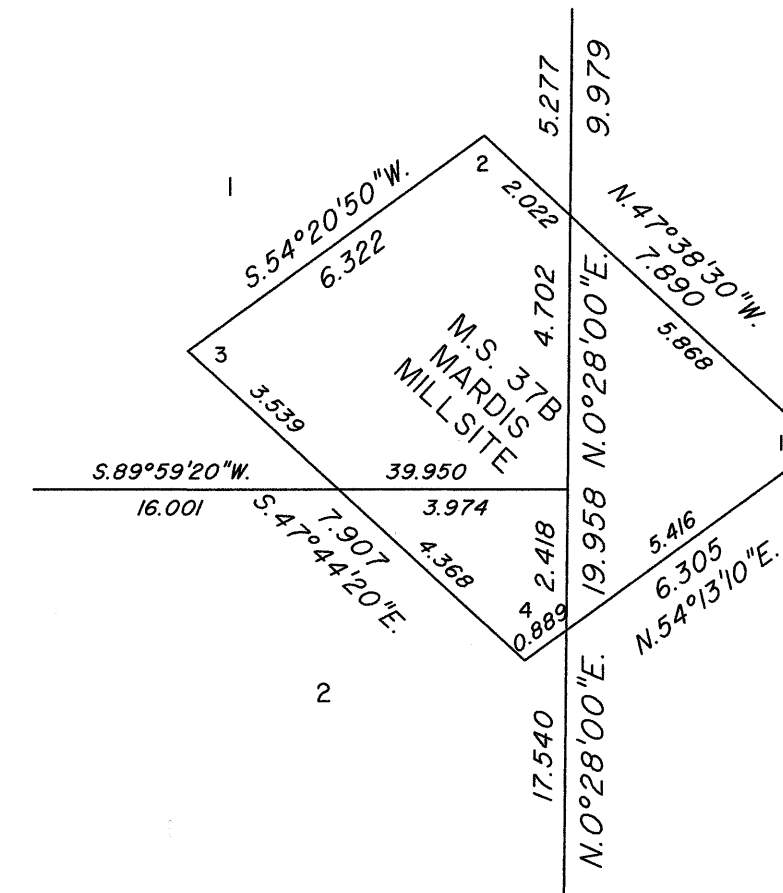
OFFICIALLY FILED  
NEVADA STATE OFFICE  
at 10:00 AM on MAR 30 2017

Latitude 41°45'27.326" N.  
Longitude 115°41'31.816" W.  
NAD 83 (2011) (EPOCH:2010.0000)



Latitude 41°44'35.337" N.  
Longitude 115°40'22.496" W.  
NAD 83 (2011) (EPOCH:2010.0000)

DETAIL "A"  
Not to Scale



SEE  
DETAIL  
"A"

A history of surveys is contained in the field notes.

This plat represents the dependent resurvey of a portion of the south boundary, a portion of the subdivisional lines, and Mineral Survey No. 37B designed to restore the corners in their true original locations according to the best available evidence, and the subdivision of section 32, Township 45 North, Range 56 East, Mount Diablo Meridian, Nevada.

Except as indicated hereon, the lottings and areas are as shown on the plats approved September 15, 1905, and the plat accepted February 12, 1980.

Survey executed by Justin V. Haddon and Brandon G. Courtright, Cadastral Surveyors, beginning August 25, 2016, and completed October 26, 2016, pursuant to Special Instructions dated August 16, 2016, for Group No. 964, Nevada.

UNITED STATES DEPARTMENT OF THE INTERIOR  
BUREAU OF LAND MANAGEMENT

Reno, Nevada March 29, 2017

This plat is strictly conformable to the approved field notes, and the survey, having been correctly executed in accordance with the requirements of law and the regulations of this Bureau, is hereby accepted.

For the Director

Chief Cadastral Surveyor for Nevada

