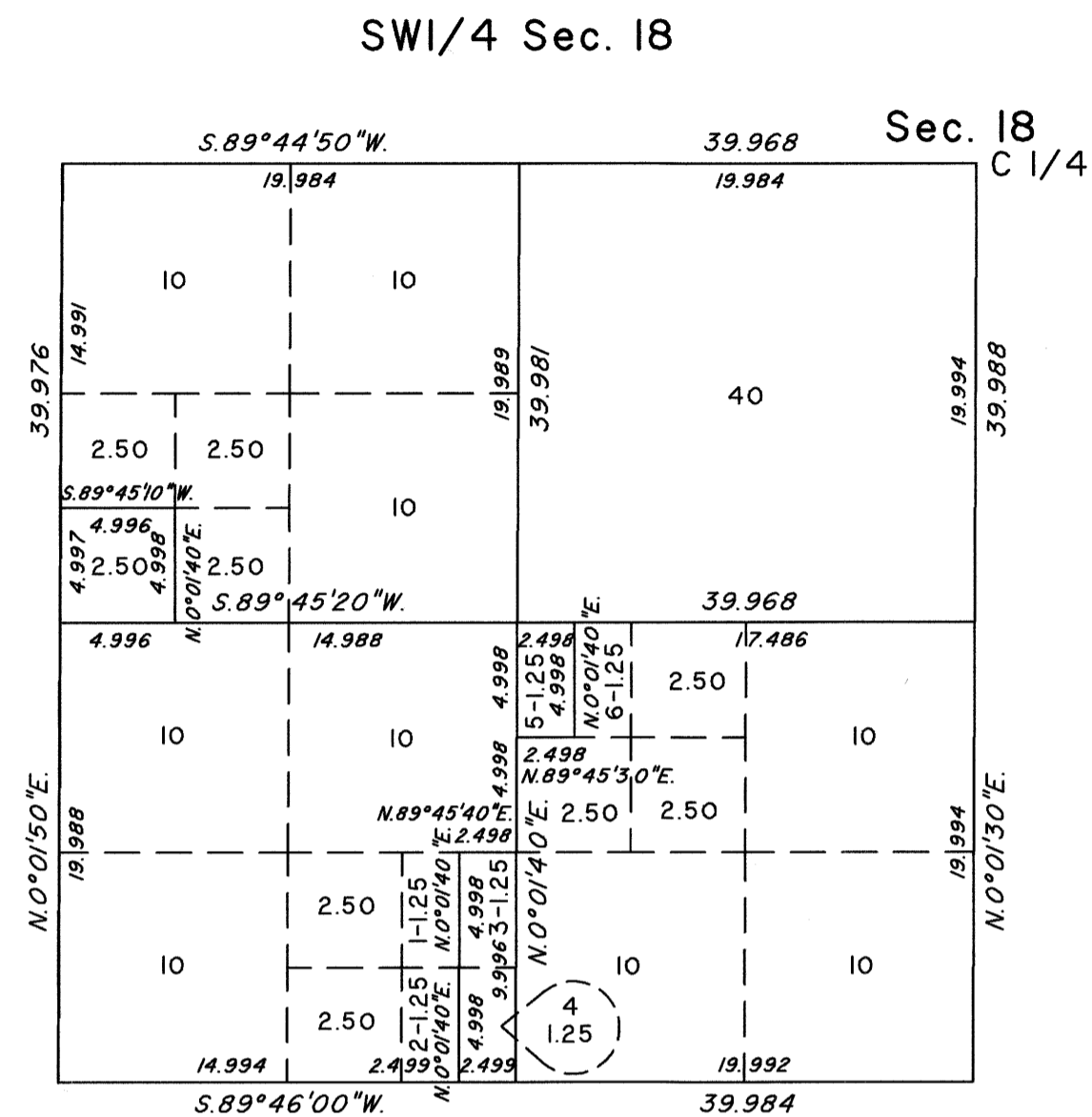
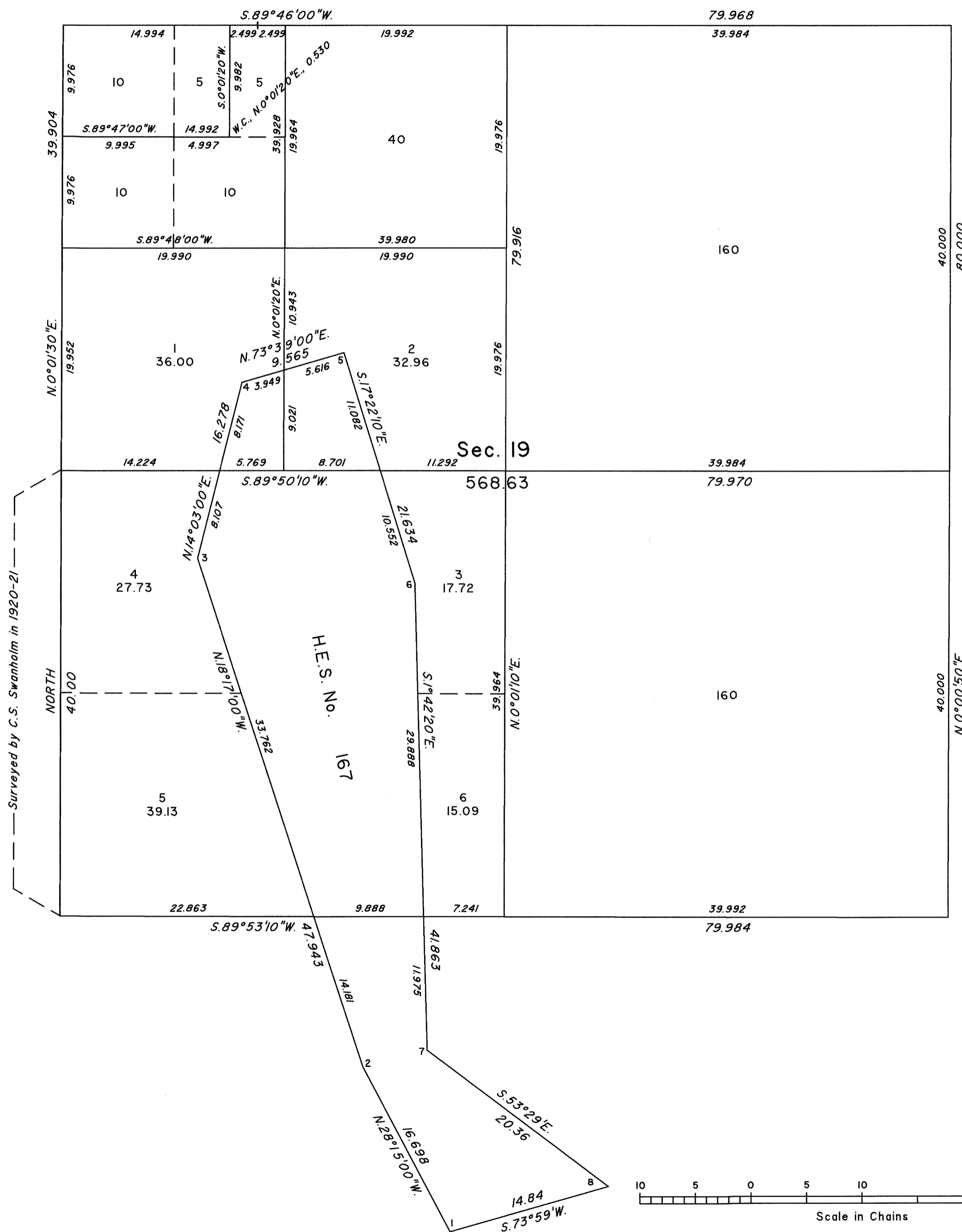


TOWNSHIP 45 NORTH, RANGE 54 EAST, OF THE MOUNT DIABLO MERIDIAN, NEVADA

ENLARGED DIAGRAMS

OFFICIALLY FILED  
NEVADA STATE OFFICE  
at 10:00 AM on  
OCT 27 2020



Reference should be made to Sheet No. 1 for survey information.

UNITED STATES DEPARTMENT OF THE INTERIOR  
BUREAU OF LAND MANAGEMENT

Reno, Nevada September 10, 2020

This plat is strictly conformable to the approved field notes, and the survey, having been correctly executed in accordance with the requirements of law and the regulations of this Bureau, is hereby accepted.

For the Director

*Mahmud O. Humming*  
Chief Cadastral Surveyor for Nevada

