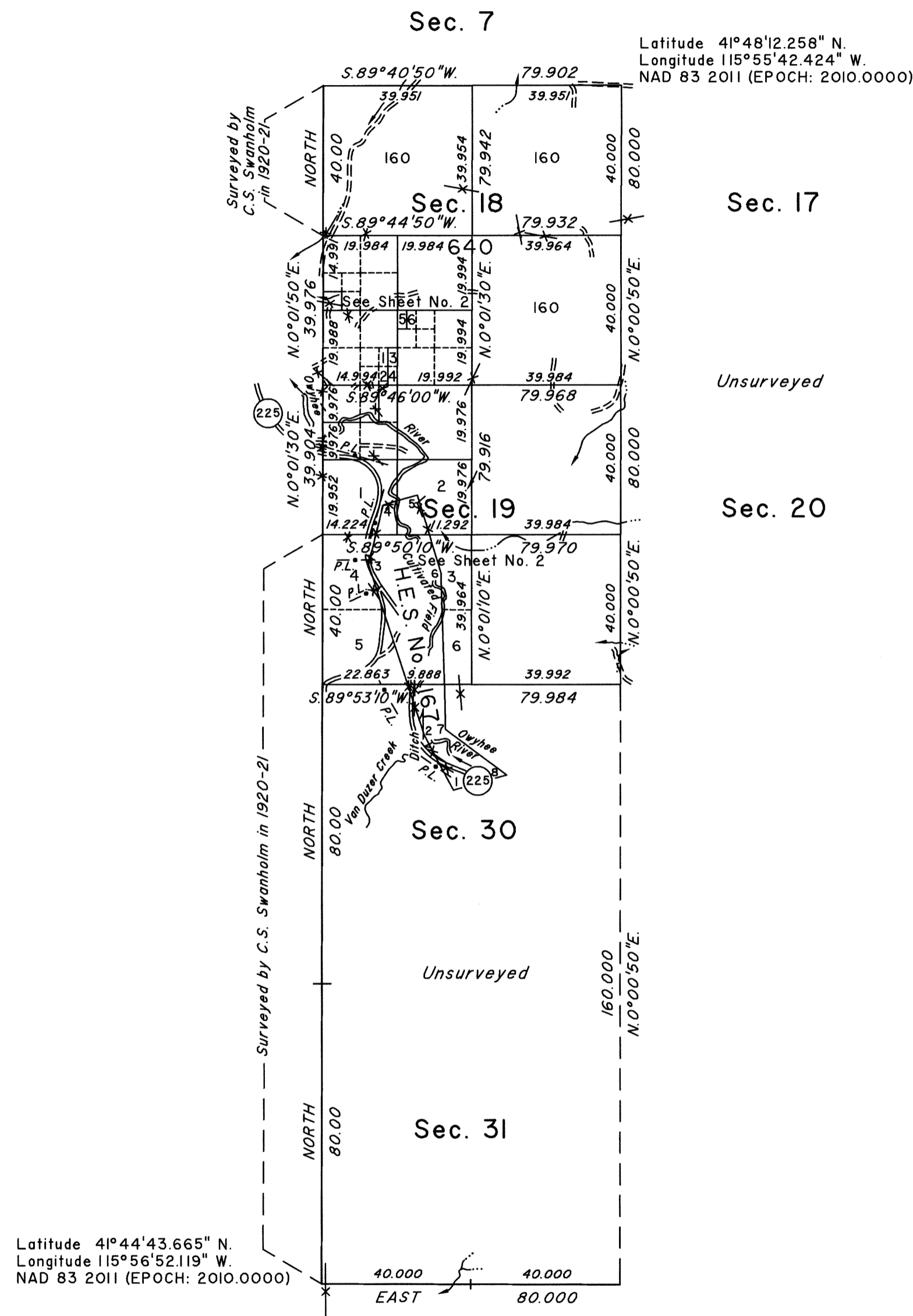


TOWNSHIP 45 NORTH, RANGE 54 EAST, OF THE MOUNT DIABLO MERIDIAN, NEVADA

DEPENDENT RESURVEY, SURVEY AND SUBDIVISION

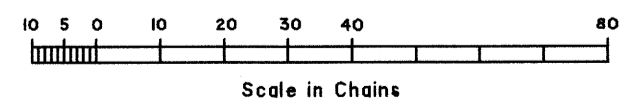
OFFICIALLY FILED
NEVADA STATE OFFICE
at 10:00 AM on OCT 27 2020



Latitude 41°44'43.665" N.
 Longitude 115°56'52.119" W.
 NAD 83 2011 (EPOCH: 2010.0000)

Latitude 41°48'12.258" N.
 Longitude 115°55'42.424" W.
 NAD 83 2011 (EPOCH: 2010.0000)

TOTAL AREA SURVEYED = 1,208.63 ACRES



A history of surveys is contained in the field notes.
 A dependent resurvey of a portion of the east boundary of T. 45 N., R. 53 E. was executed concurrently under Group No. 982.

This plat, in two sheets, represents the dependent resurvey of a portion of Homestead Entry Survey No. 167 designed to restore the corners in their true original locations according to the best available evidence, the survey of a portion of the south boundary and a portion of the subdivisional lines, and the subdivision of sections 18 and 19, Township 45 North, Range 54 East, Mount Diablo Meridian, Nevada.

Unless otherwise indicated in the field notes, all courses and distances, shown on the plat along the perimeter of the Homestead Entry Survey, were taken from the appropriate approved survey records.

Survey executed by Steven W. Bell, Land Surveyor (U.S.F.S.), beginning June 5, 2018 and completed June 11, 2020, pursuant to Special Instructions dated May 4, 2018, and Amended Special Instructions dated October 24, 2019, for Group No. 984, Nevada.

UNITED STATES DEPARTMENT OF THE INTERIOR
 BUREAU OF LAND MANAGEMENT

Reno, Nevada September 10, 2020

This plat is strictly conformable to the approved field notes, and the survey, having been correctly executed in accordance with the requirements of law and the regulations of this Bureau, is hereby accepted.

For the Director

Chief Cadastral Surveyor for Nevada