

TOWNSHIP 45 NORTH, RANGE 53 EAST, OF THE MOUNT DIABLO MERIDIAN, NEVADA

DEPENDENT RESURVEY, SUBDIVISION AND METES-AND-BOUNDS SURVEY

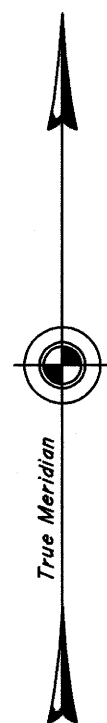
ENLARGED DIAGRAM
SEI/4 Sec. 13

Sec. 12

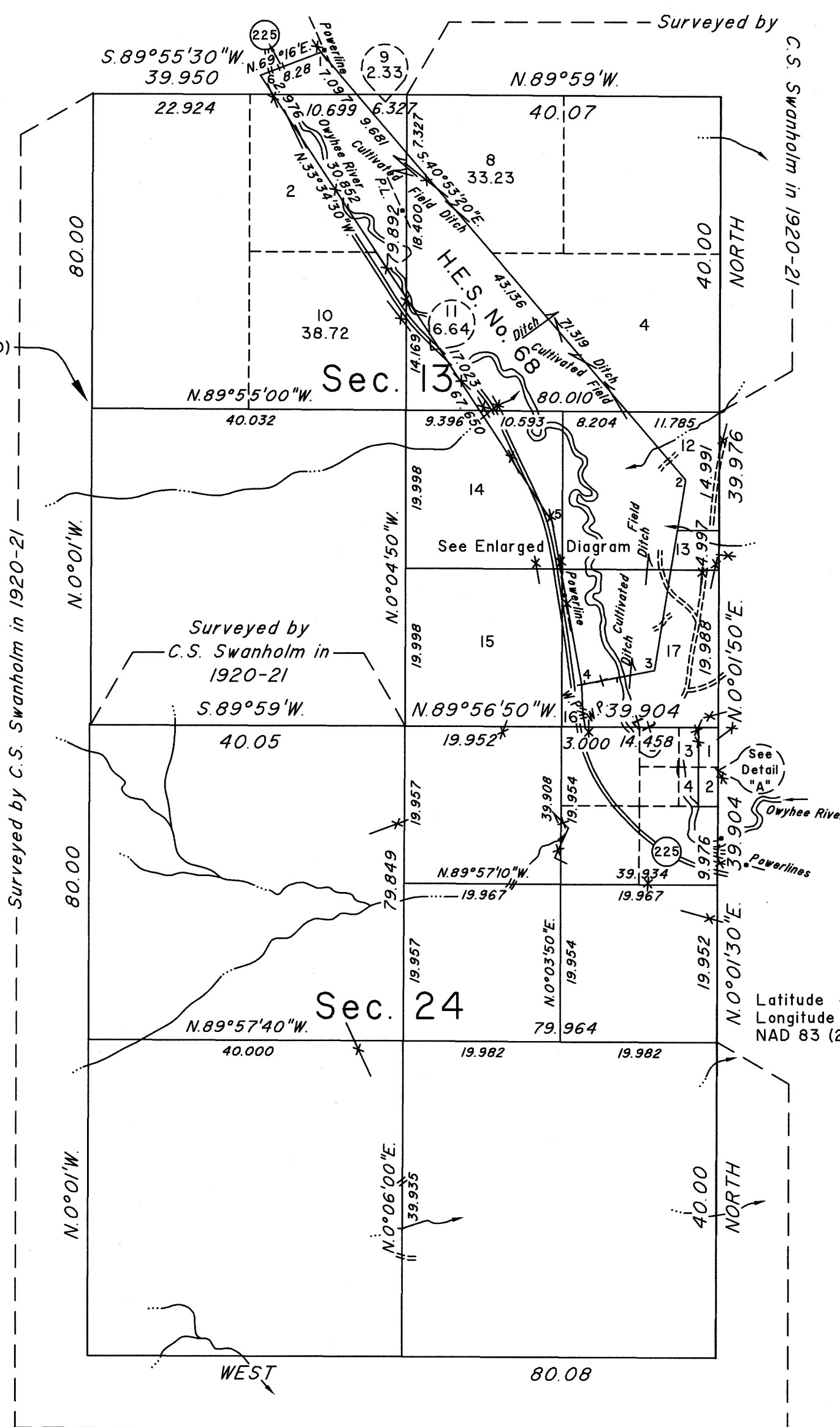
Sec. 13
C 1/4

Latitude 41°47'46.031" N.
Longitude 115°58'01.755" W.
NAD 83 (2011) (EPOCH: 2010.0000)

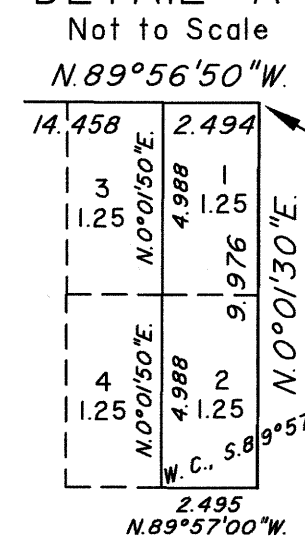
Sec. 14



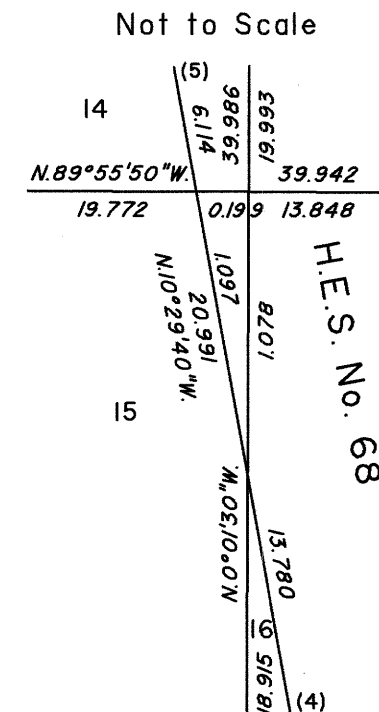
Sec. 23



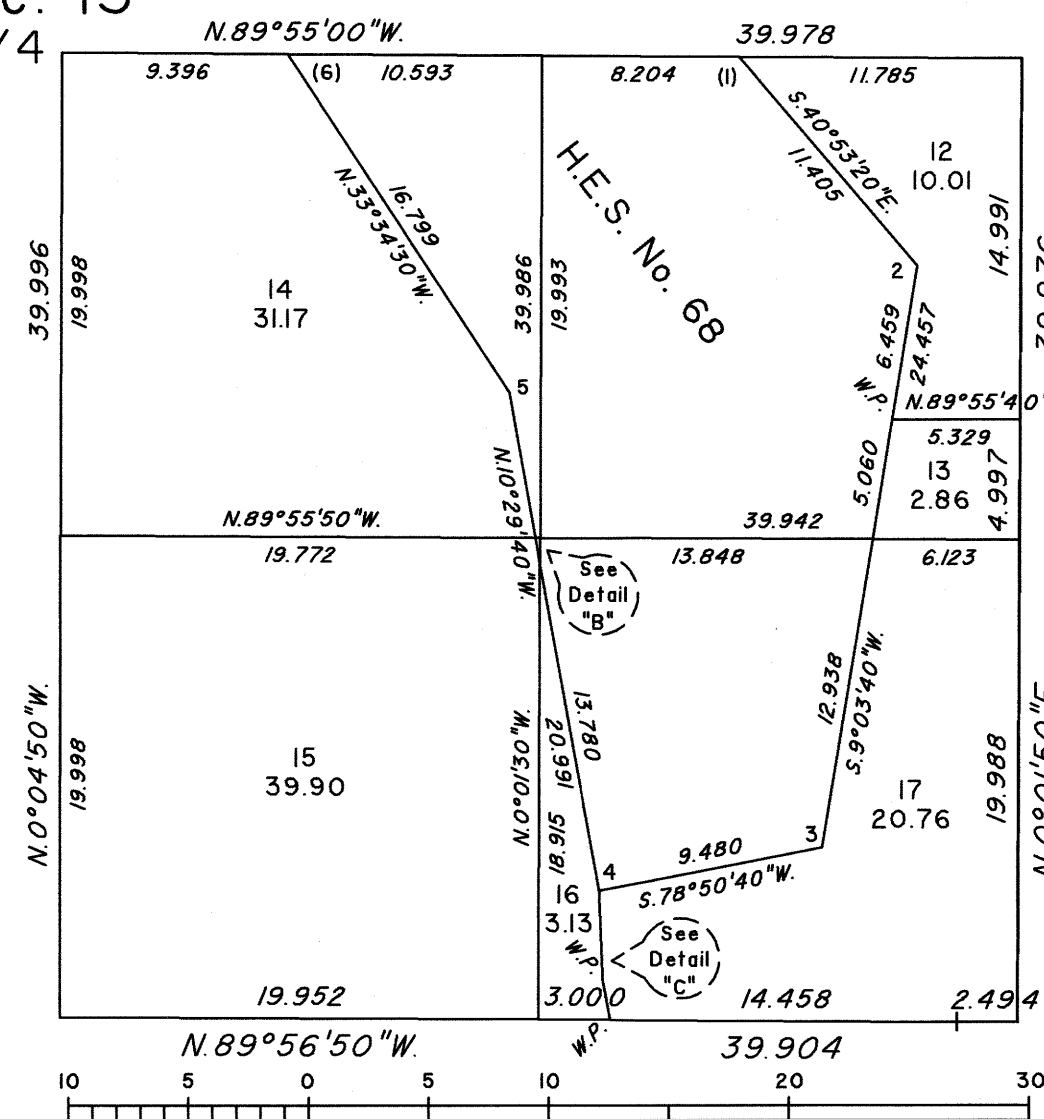
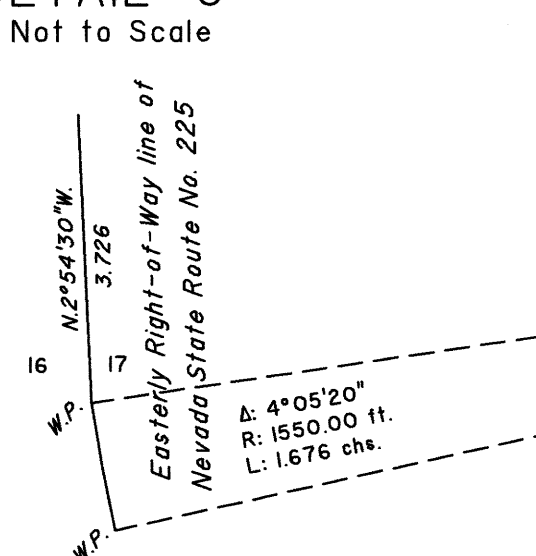
DETAIL "A"



DETAIL "B"



DETAIL "C"



Scale in Chains

A history of surveys is contained in the field notes.

This plat represents the dependent resurvey of a portion of the east boundary, a portion of the subdivisional lines and a portion of Homestead Entry Survey No. 68, designed to restore the corners in their true original locations according to the best available evidence, the subdivision of sections 13 and 24 and a metes-and-bounds survey of a portion of the easterly right-of-way line of Nevada State Route No. 225, Township 45 North, Range 53 East, Mount Diablo Meridian, Nevada.

Unless otherwise indicated in the field notes, all courses and distances, shown on the plat along the perimeter of the Homestead Entry Survey, were taken from the appropriate approved survey records.

Except as indicated hereon, the lottings and areas are as shown on the plat approved January 6, 1923 and accepted May 11, 1923.

Survey executed by Steven W. Bell, Land Surveyor (U.S.F.S.) and Kane M. Hellebust, Supervisory Land Surveyor (U.S.F.S.), beginning June 5, 2018 and completed June 11, 2020, pursuant to Special Instructions dated March 27, 2018, and Amended Supplemental Special Instructions dated October 24, 2019, for Group No. 982, Nevada.

UNITED STATES DEPARTMENT OF THE INTERIOR
BUREAU OF LAND MANAGEMENT

Reno, Nevada September 10, 2020

This plat is strictly conformable to the approved field notes, and the survey, having been correctly executed in accordance with the requirements of law and the regulations of this Bureau, is hereby accepted.

For the Director

Chief Cadastral Surveyor for Nevada

Sec. 25

