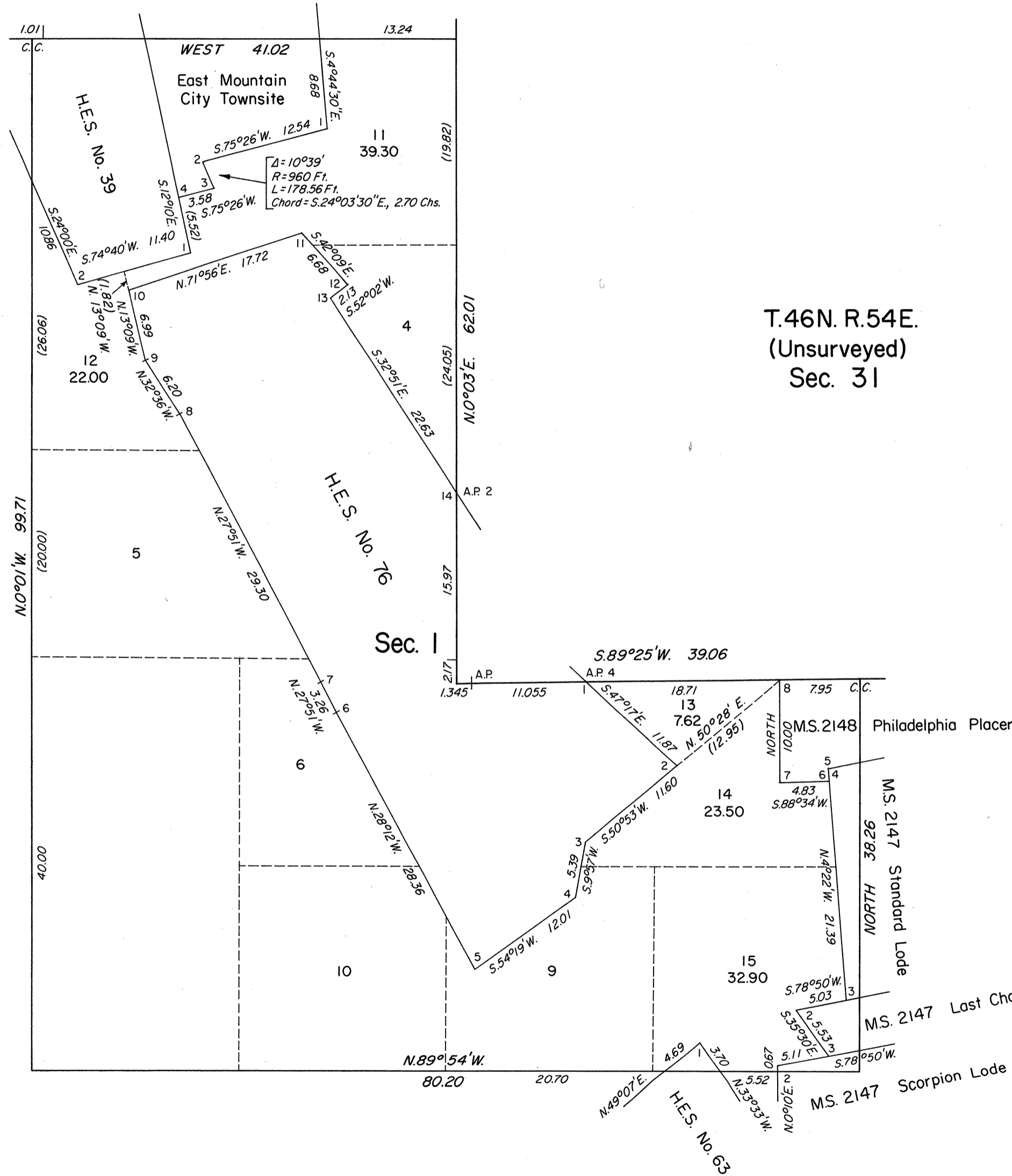
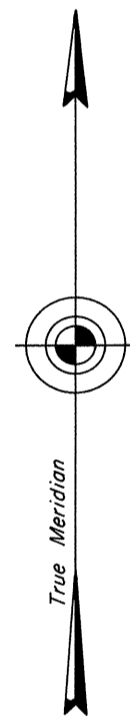


OFFICIALLY FILED
NEVADA STATE OFFICE
10:00 A.M., 7/10/75
37, 1975

TOWNSHIP 45 NORTH, RANGE 53 EAST, OF THE MOUNT DIABLO MERIDIAN, NEVADA
SUPPLEMENTAL PLAT OF SECTION 1

Sec. 36

Ninth Standard Parallel North



T.46N. R.54E.
(Unsurveyed)
Sec. 31

This plat showing amended lottings created by the segregation of Mineral Survey Nos. 2147 and 2148, and the East Mountain City Townsite in section 1, T. 45 N., R. 53 E., Mount Diablo Meridian, Nevada is based upon the plat approved January 6, 1923 and accepted May 11, 1923, and the plat of T. 46 N., R. 54 E., accepted May 9, 1975.

UNITED STATES DEPARTMENT OF THE INTERIOR
BUREAU OF LAND MANAGEMENT
Washington, D.C. May 9, 1975

This plat, showing amended lottings, is based upon the official records and, having been correctly prepared in accordance with the regulations of this Bureau, is hereby accepted.

For the Director

Bernard W. Fisher
Chief, Division of Cadastral Survey

Sec. 6

