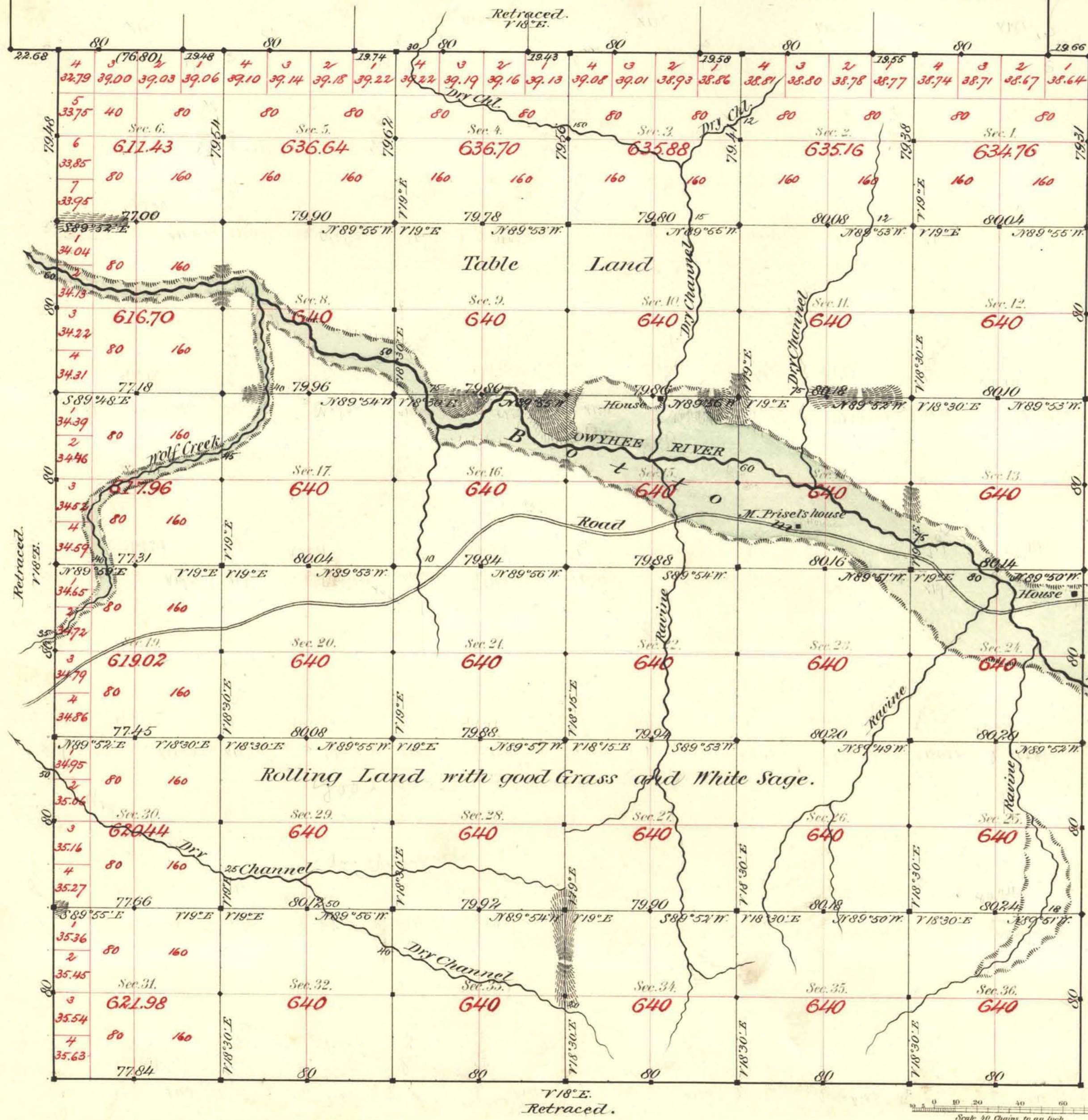


TOWNSHIP N<sup>o</sup> 45 NORTH RANGE N<sup>o</sup> 49 EAST MOUNT DIABLO MERIDIAN



Aggregate Area of Public Land Surveyed 22,886.67 Acres.

Commenced August 16<sup>th</sup> 1882.  
Completed " 21<sup>st</sup> "

Subdivisions not noted run with a Variation of 18° 45' East.

Scale 40 Chains to an Inch.

Surveys Designated	By Whom Surveyed	Date of Contract	Amount of Surveys	When Surveyed
Township Lines	Hatch & Eaton	Feb. 6 <sup>th</sup> 1871.	23-76-83	1871
" retraced	Blzpatrick & Dwyer	July 25 <sup>th</sup> 1882	23-76-83	1882
Subdivisions	"	"	59-64-83	August "
Convergency	"	"	1-17-78	" "

774 Co. 76.  
43  
153  
"

The above Map of Township N<sup>o</sup> 45 North of Range N<sup>o</sup> 49 East of Mount Diablo Meridian is strictly conformable to the field notes of the survey thereof on file in this Office, which have been examined and approved.

Surveyor General's Office,  
Reno, Nevada  
December 28<sup>th</sup> 1882

J. L. Davis  
Sur. Gen. Nevada