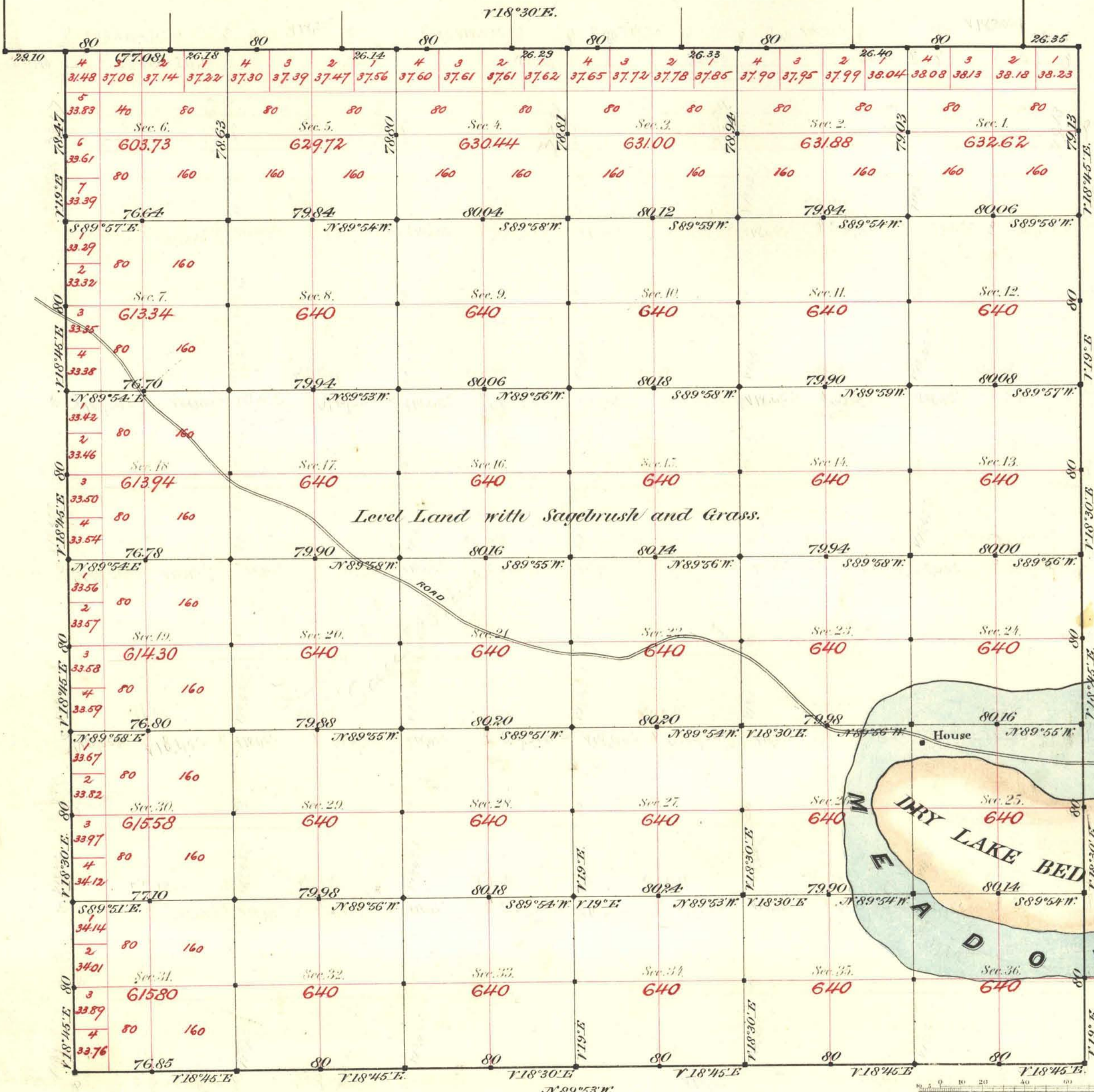


TOWNSHIP N^o 45 NORTH RANGE N^o 47 EAST MOUNT DIABLO MERIDIAN



Aggregate Area of Public Land surveyed 22832.33 Acres.

Level Land with Sagebrush and Grass.

Commenced June 12th 1882.
Completed " 18th "

Subdivisions not noted run with a Variation of 18^o45' East.

Surveys Designated	By Whom Surveyed	Date of Contract	Amount of Surveys	When Surveyed	77 ^o Cont
North Bdy.	Smyle & Fitzpatrick	July 25 th 1882	76 00-00	1882	153
E. N. & S.	"	March 10 th 1883	17 71-45	1883	163
Subdivisions	"	"	59-59-29	June 1882	"
Convergency	"	"	1-51-34	"	"

The above Map of Township N^o 45 North of Range N^o 47 East of Mount Diablo Meridian is strictly conformable to the field notes of the survey thereof on file in this Office, which have been examined and approved.

Surveyor General's Office,
Reno, Nevada

L. L. Downing,
Supt. Genl Nevada

August 9th 1883