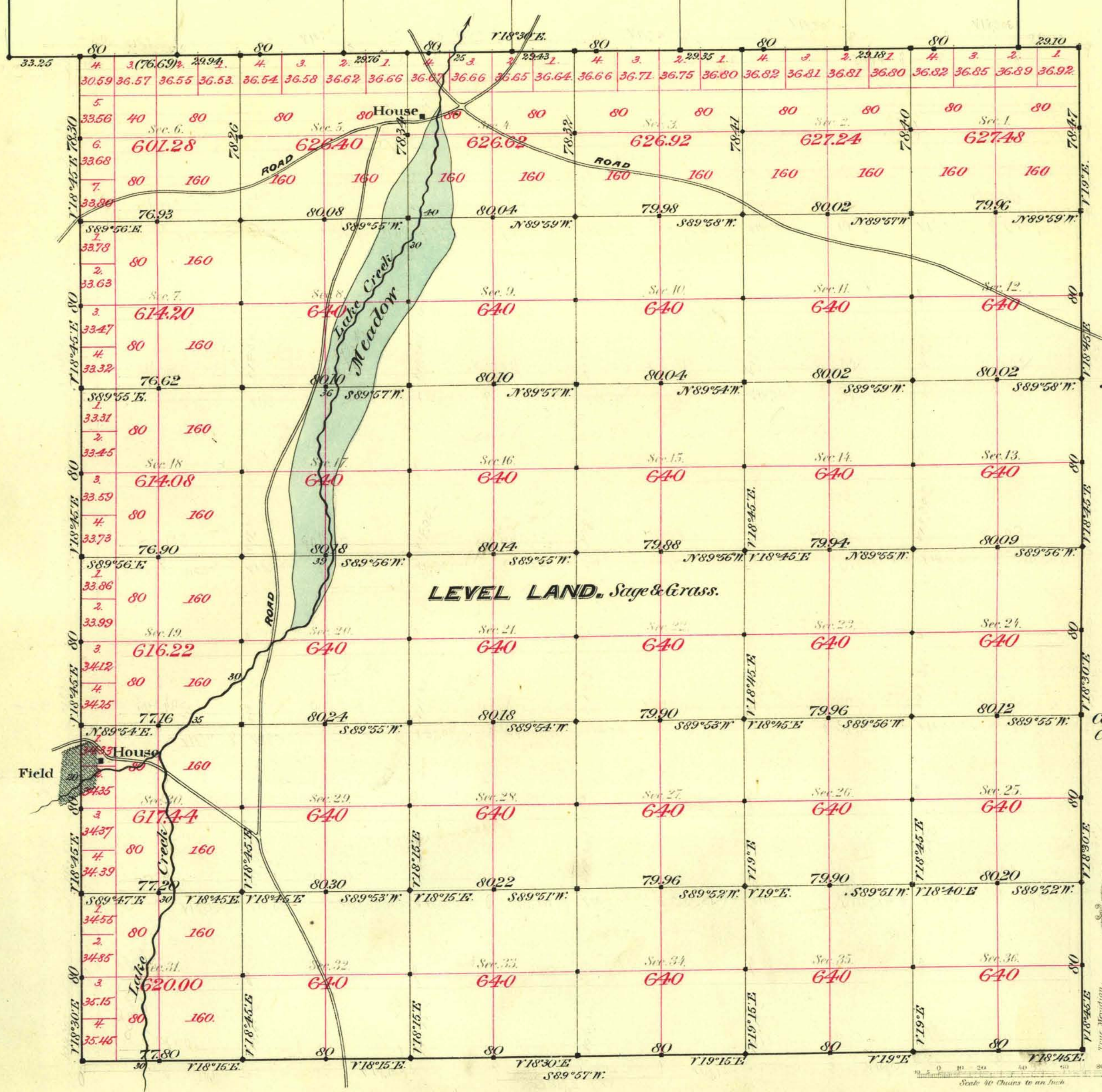


TOWNSHIP N^o 45 NORTH, RANGE N^o 46 EAST, MOUNT DIABLO MERIDIAN.



Aggregate Area of Public Land surveyed 22817.88 Acres.

Commenced June 26th 1883.
Completed July 2nd "

Subdivisions not noted run with a Variation of 18°30' East.

Survey Designated	By Whom Surveyed	Date of Contract	Amount of Surveys	When Surveyed
North Bdy.	Smyle & Fitzpatrick	July 25 th 1882	6-00-00	1882
E.W.&S.	"	March 10 th 1883	17-74-57	1883
Sectionlines	"	"	59-58-11	June & July 1883
Convergency	"	"	1-67-66	"

N^o Cont.
153
163

The above Map of Township N^o 45 North of Range N^o 46 East of Mount Diablo Meridian is strictly conformable to the field notes of the survey thereof on file in this Office, which have been examined and approved.

Surveyor General's Office,
Reno, Nevada

August 9th 1883

L. C. Parry
Sur. Gen. Nevada

A. J. Bancroft & Co. 1883 S.F.