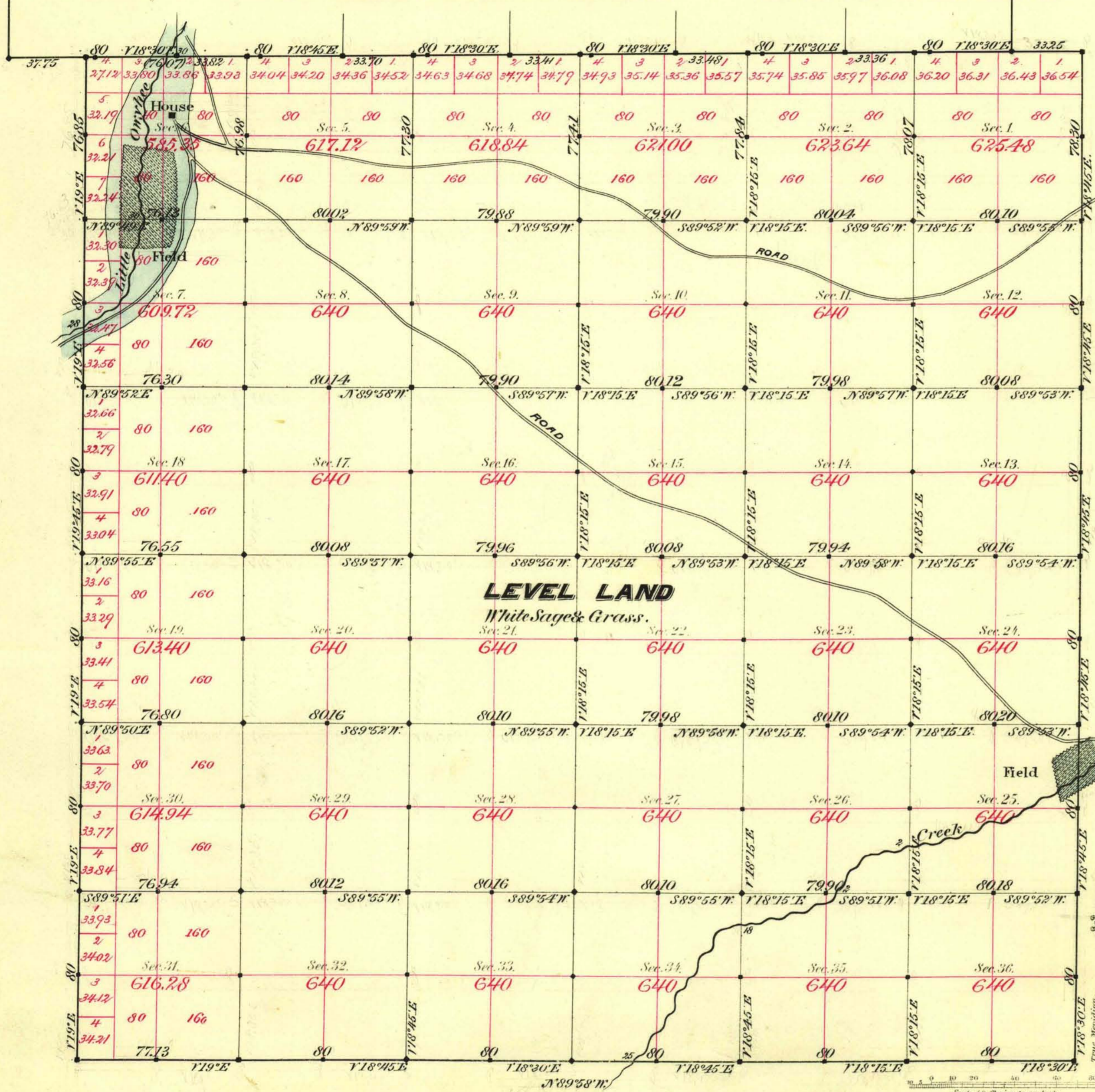


TOWNSHIP N<sup>o</sup> 45 NORTH RANGE N<sup>o</sup> 45 EAST MOUNT DIABLO MERIDIAN



Aggregate Area of Public Land surveyed 22757.17 Acres.

Commenced June 19<sup>th</sup> 1883.  
Completed " 25<sup>th</sup> "

Subdivisions not noted run with a Variation of 18°30' East.

Surveys Designated	By Whom Surveyed	Date of Contract	Amount of Survey	When Surveyed
North Boundary	Smalley & Fitzpatrick	July 25 <sup>th</sup> 1882	6-00-00	1882
E.W.&S.	"	March 10 <sup>th</sup> 1883	17-72-28	1883
Subdivisions	"	"	59-51-70	June 1883
Convergency	"	"	2-07-77	"

77<sup>th</sup> Cont.  
153  
163

The above Map of Township N<sup>o</sup> 45 North of Range N<sup>o</sup> 45 East of Mount Diablo Meridian is strictly conformable to the field notes of the survey thereof on file in this Office, which have been examined and approved.

Surveyor General's Office.  
Reno, Nevada  
August 9<sup>th</sup> 1883

L. C. Downing  
Supt. Gen'l Nevada.