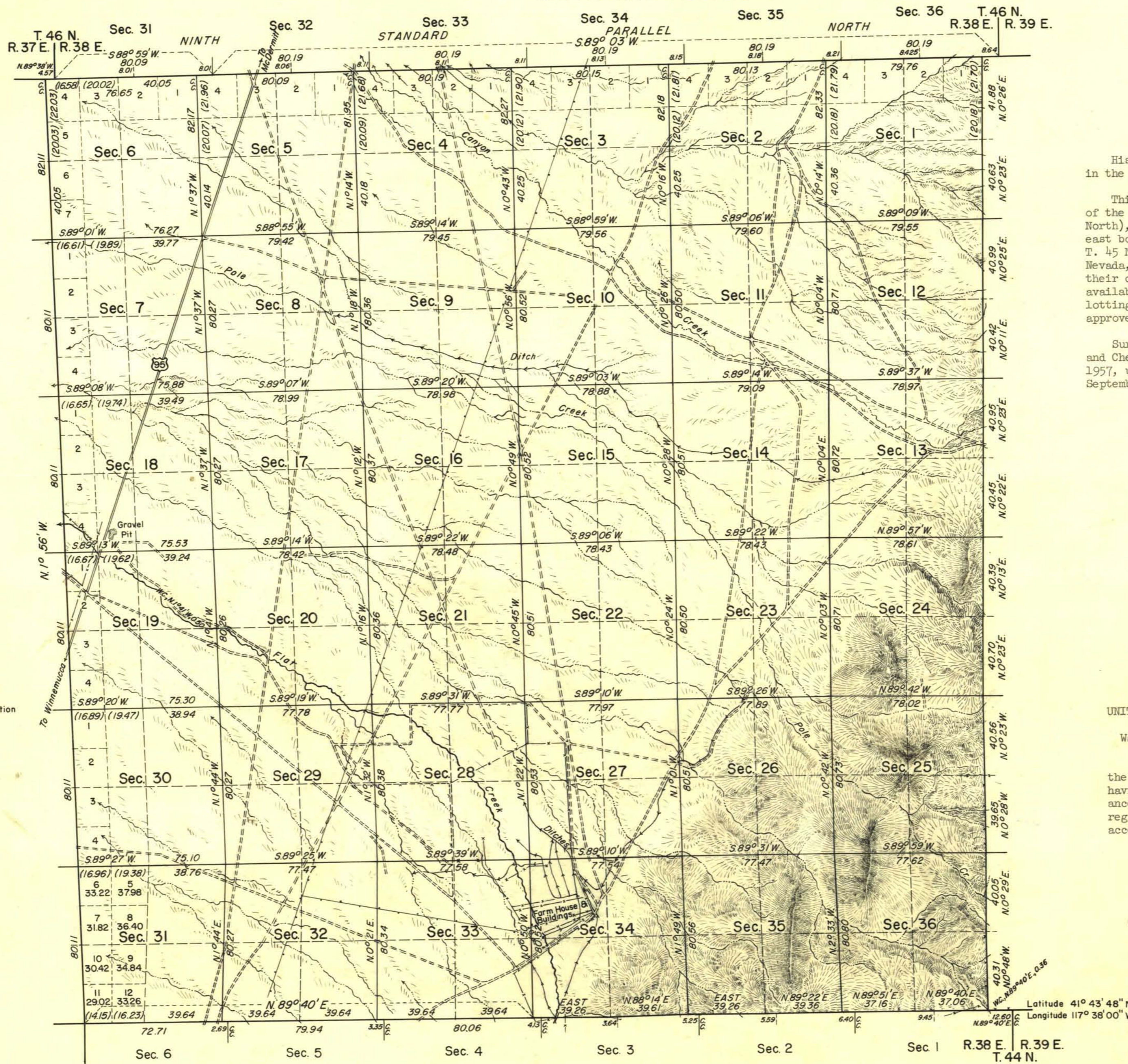


# TOWNSHIP 45 NORTH, RANGE 38 EAST, OF THE MOUNT DIABLO MERIDIAN, NEVADA. DEPENDENT RESURVEY



History of earlier surveys is contained in the field notes.

This plat represents a dependent resurvey of the north boundary (Ninth Standard Parallel North), a portion of the south boundary, the east boundary and subdivisional lines of T. 45 N., R. 38 E., Mount Diablo Meridian, Nevada, designed to restore the corners in their original locations according to the best available evidence. Except as shown hereon, lottings and areas are as shown on plat approved March 27, 1869.

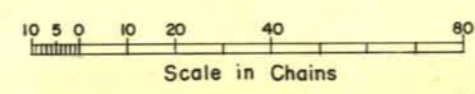
Survey executed by Woodrow H. Sylvester and Chester C. Ellicott, May 20 to June 21, 1957, under special instructions dated September 8, 1954, for Group 359, Nevada.

UNITED STATES DEPARTMENT OF THE INTERIOR  
BUREAU OF LAND MANAGEMENT  
Washington, D.C. March 23, 1959

This plat is strictly conformable to the approved field notes, and the survey, having been correctly executed in accordance with the requirements of law and the regulations of this Bureau, is hereby accepted.

For the Director  
*Earl G. Harrington*  
Cadastral Engineering Staff Officer

Area Resurveyed, 22,947.59 Acres.



Latitude 41° 43' 48" N  
Longitude 117° 36' 00" W