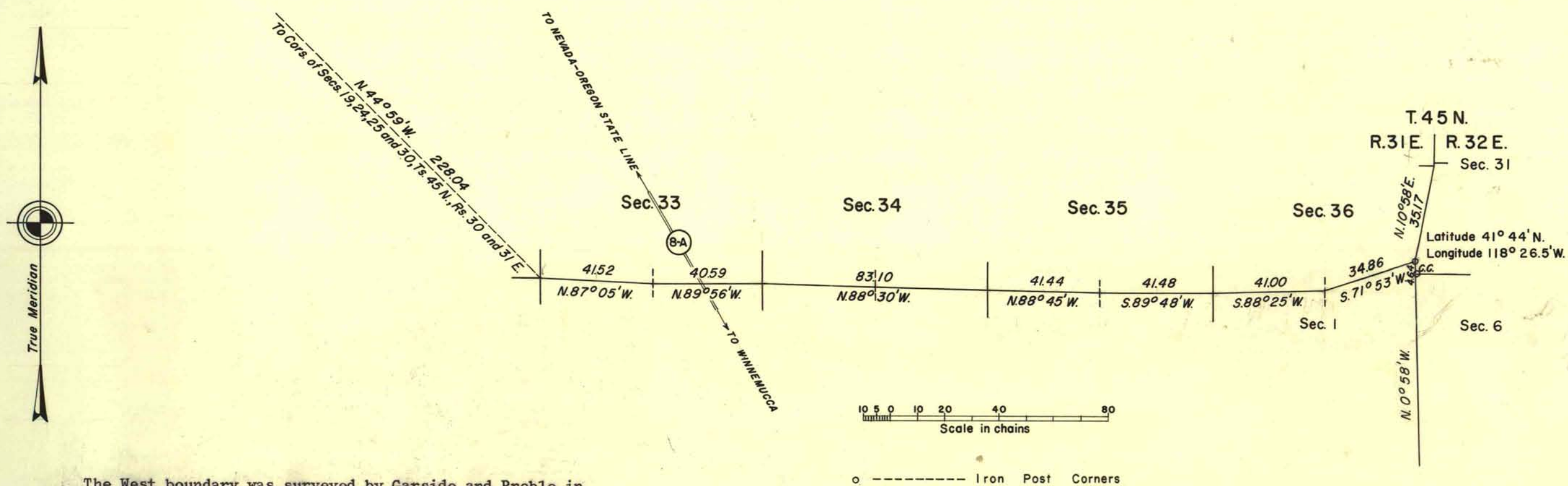


TOWNSHIP 45 NORTH, RANGE 31 EAST, MOUNT DIABLO MERIDIAN, NEVADA

RETRACEMENT



The West boundary was surveyed by Garside and Preble in 1873. The North boundary (Ninth Standard Parallel North) was surveyed by Garside and Preble in 1874 and the east four (4) miles through R. 31 E. were resurveyed by W. H. Good in 1923. The South and East boundaries were surveyed by Garside and Preble in 1874 and the subdivisional lines by Garside and Preble in 1875. The East boundary was dependently resurveyed by Carl S. Swanholm and Wilson McConkie in 1939.

This plat represents a retracement and partial reestablishment of the east four (4) miles of the South boundary of T. 45 N., R. 31 E., Mount Diablo Meridian, Nevada.

Survey executed by James W. Hardison, September 26 to October 31, 1938 under special instructions dated June 14, 1938 for Group 243, Nevada.

UNITED STATES DEPARTMENT OF THE INTERIOR
BUREAU OF LAND MANAGEMENT
Washington, D. C. November 29, 1956

This plat is strictly conformable to the approved field notes, and the survey, having been correctly executed in accordance with the requirements of law and the regulations of this Bureau, is hereby accepted.

For the Director

Earl S. Harrington
Cadastral Engineering Staff Officer