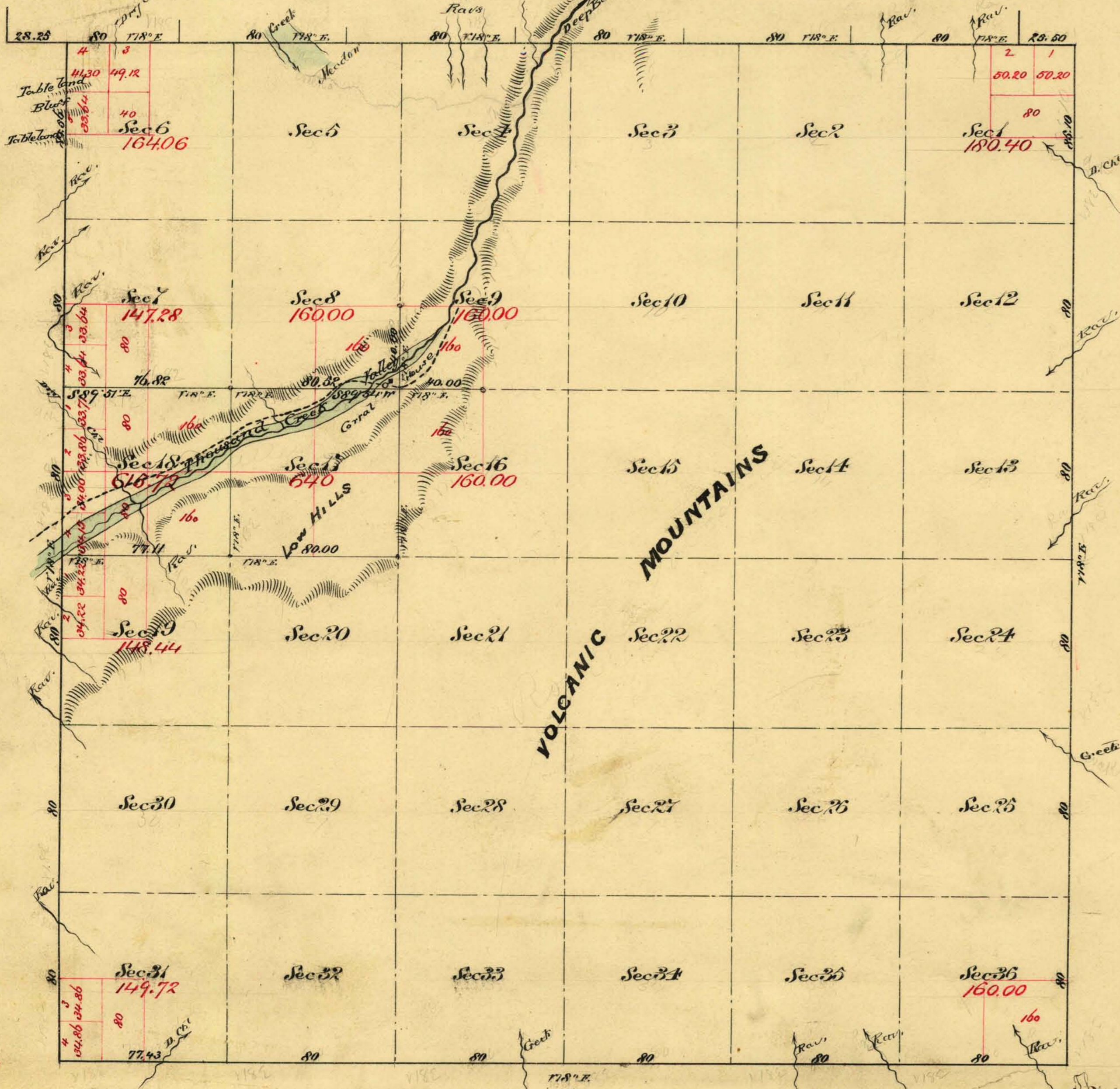


Township N^o 45 North

Range N^o 26 East

Mount Diablo Meridian



Aggregate area of Public Land Surveyed
 26,836.62 Ac.
 Aggregate of Mountains Unsurveyed
 20,457.85 "
 23,142.87 "

Commenced May 23rd 1879
 Completed " " "

Survey designated	By whom Surveyed	Date of Contract	Amnt. of Survey	When Surveyed	Notes
W. Boundary	Watch Skinner & Co	July 25 th 1874	6 00 - 00	1874	
E. W. Boundary	W. S. S. S. S.	Mar. 25 th 1879	18 07 - 00	1879	
Subdivisions	"	"	6 - 74 - 43	May "	

The above plat of Township N 45 North of Range N 26 East Mount Diablo Meridian is strictly conformable to the field notes of the survey thereof on file in this office and same have been examined and approved
 Wm. S. Gault, Office
 Virginia City Nev
 July 2nd 1879

C. S. Davis
 U.S. Surveyor General

0571

T45N, R26E.

10