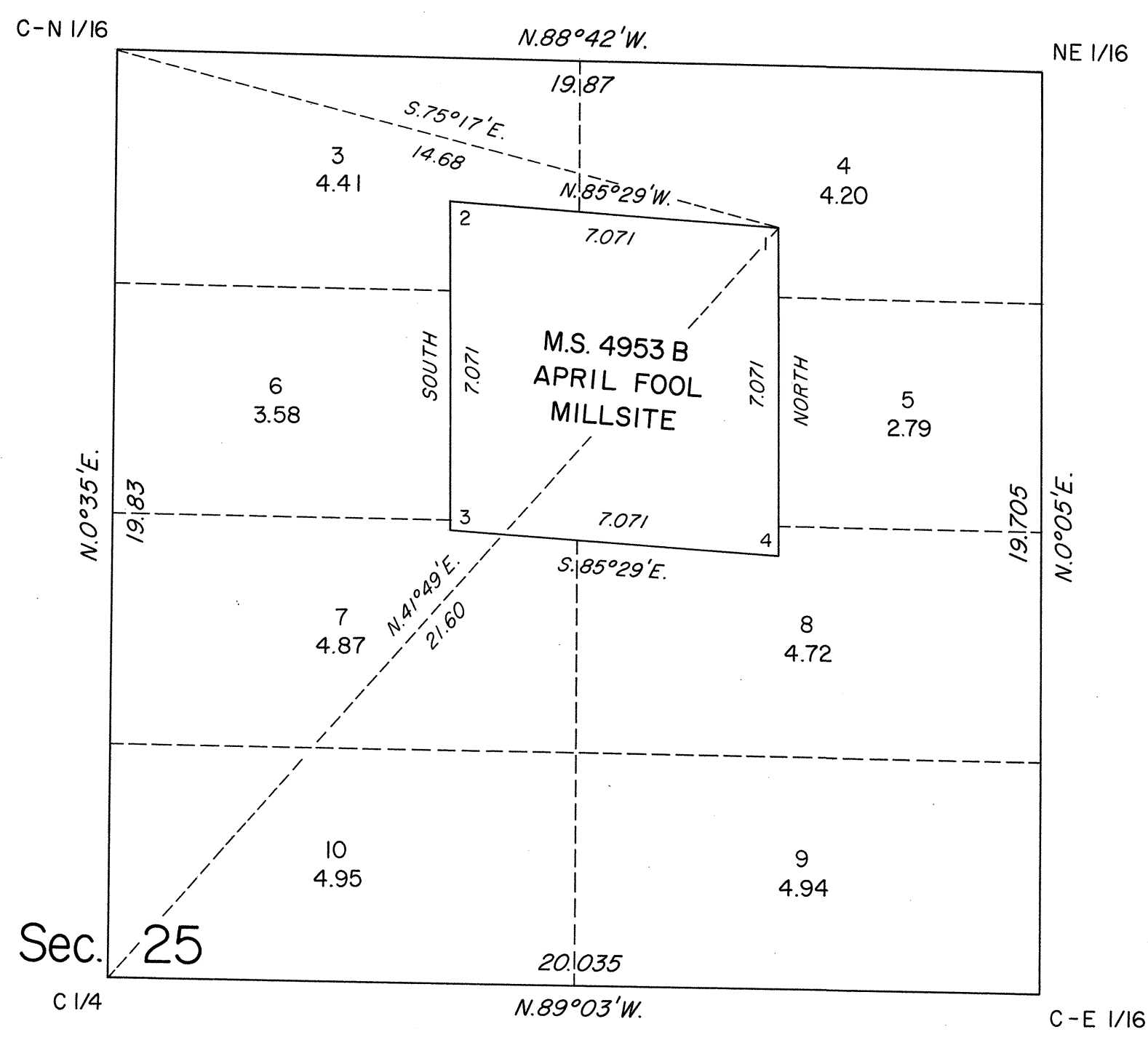
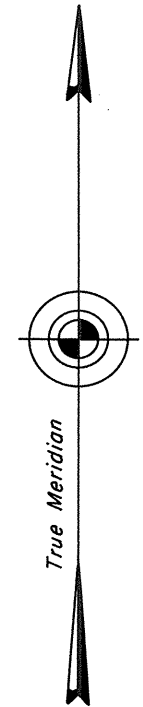
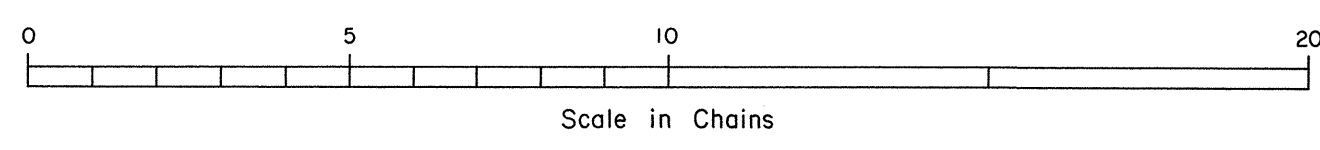


ORIGINAL

TOWNSHIP 45 NORTH, RANGE 25 EAST, OF THE MOUNT DIABLO MERIDIAN, NEVADA
SUPPLEMENTAL PLAT OF LOT 2 SECTION 25



This plat, showing a subdivision of lot 2 in sec. 25, T.45 N., R. 25 E., Mount Diablo Meridian, Nevada, is based upon the plat approved December 19, 1988, and the mineral survey records.



UNITED STATES DEPARTMENT OF THE INTERIOR
BUREAU OF LAND MANAGEMENT
Reno, Nevada October 12, 1989
This plat, showing amended lottings, is based upon the official records and, having been correctly prepared in accordance with the regulations of this Bureau, is hereby accepted.

For the Director
James R. Munson
Acting Chief Cadastral Surveyor