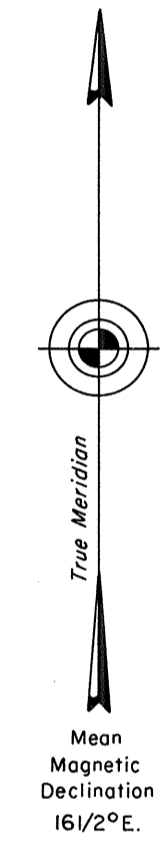


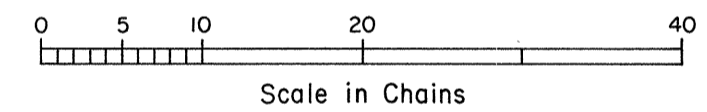
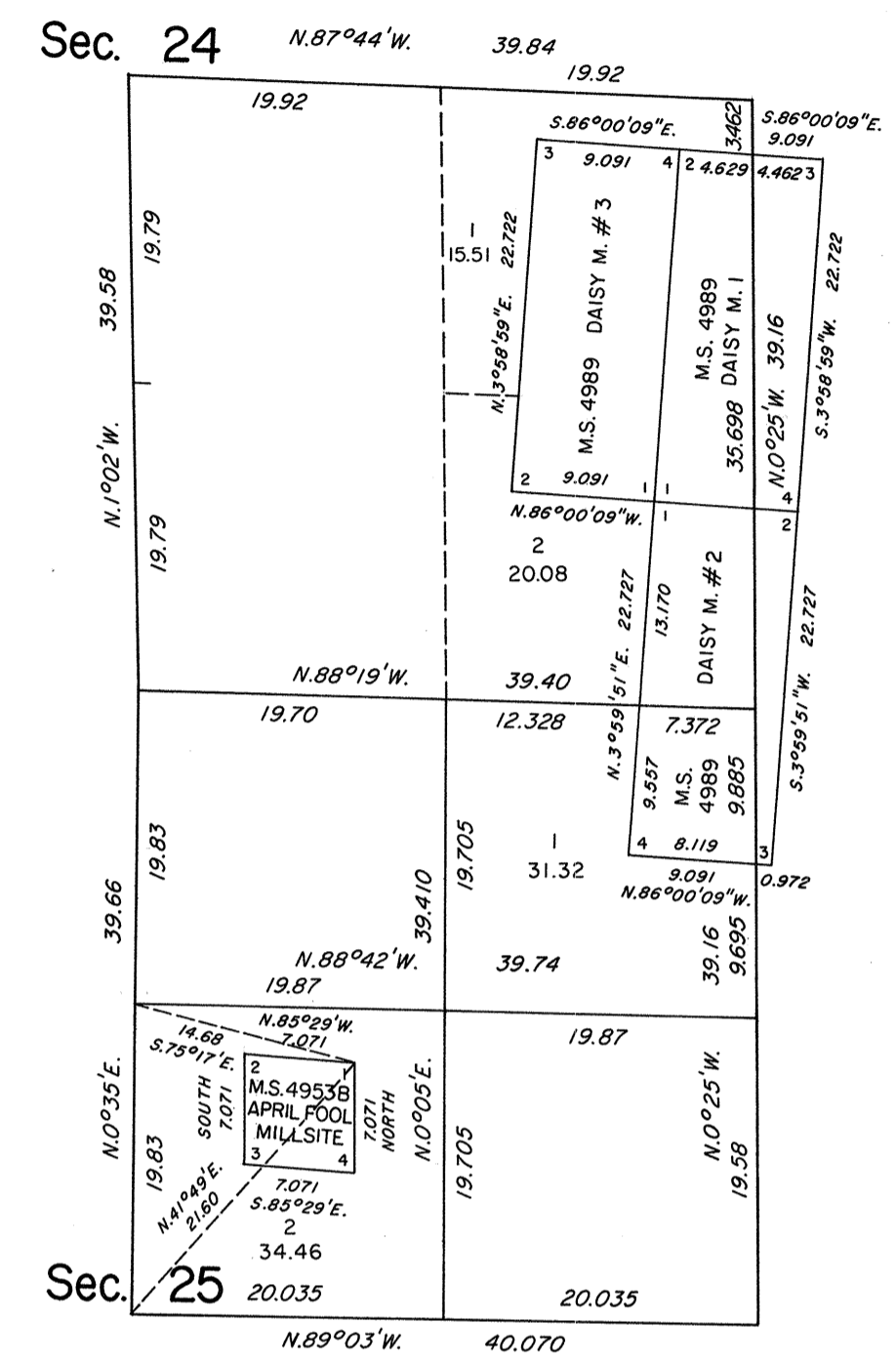
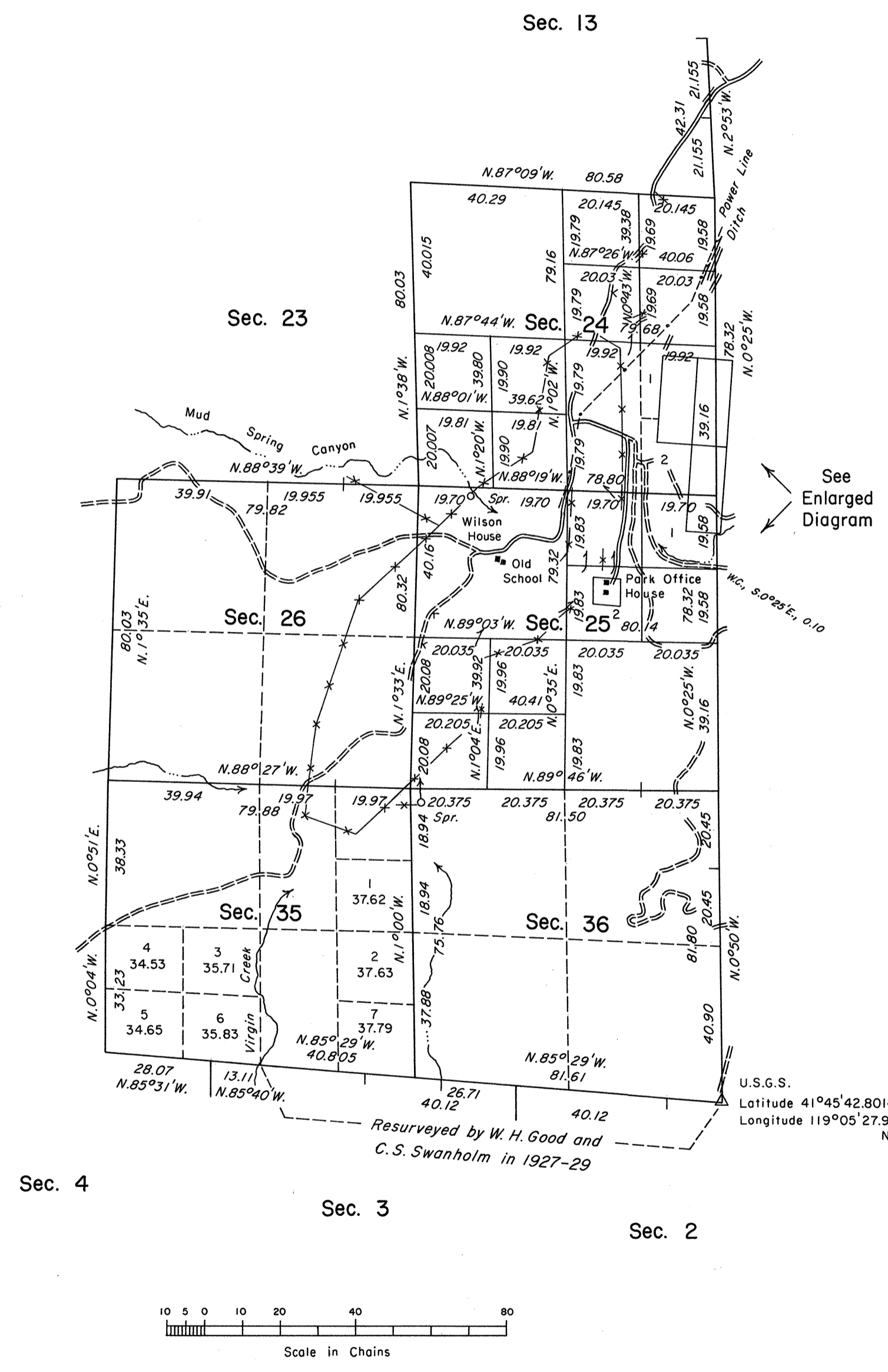
TOWNSHIP 45 NORTH, RANGE 25 EAST, OF THE MOUNT DIABLO MERIDIAN, NEVADA

DEPENDENT RESURVEY AND SUBDIVISION OF SECTIONS

ENLARGED DIAGRAM OF SE 1/4 SEC. 24 AND NE 1/4 SEC. 25



Unsurveyed



History of the earlier surveys is contained in the field notes.

This plat represents a dependent resurvey of a portion of the south and east boundaries, and a portion of the subdivisional lines, designed to restore the corners in their true original locations according to the best available evidence, and the survey of the subdivision of sections 24 and 25, T. 45 N., R. 25 E., Mount Diablo Meridian, Nevada.

Unless otherwise indicated in the field notes, all courses and distances shown on the plat along the perimeter of the mineral segregation areas are taken from the appropriate mineral survey record.

Lotings and areas, except as shown hereon, are as indicated on the plat approved July 2, 1879.

Survey executed by Neil R. Forsyth, Cadastral Surveyor, beginning July 12, 1988 and completed July 25, 1988, under Special Instructions dated July 5, 1988, for Group No. 660, Nevada.

UNITED STATES DEPARTMENT OF THE INTERIOR
BUREAU OF LAND MANAGEMENT
Reno, Nevada December 19, 1988

This plat is strictly conformable to the approved field notes, and the survey, having been correctly executed in accordance with the requirements of law and the regulations of this Bureau, is hereby accepted.

For the Director
Lucel E Bland
Chief Cadastral Surveyor

T.45N., R.25E., M.D.M.

CMU

JRM