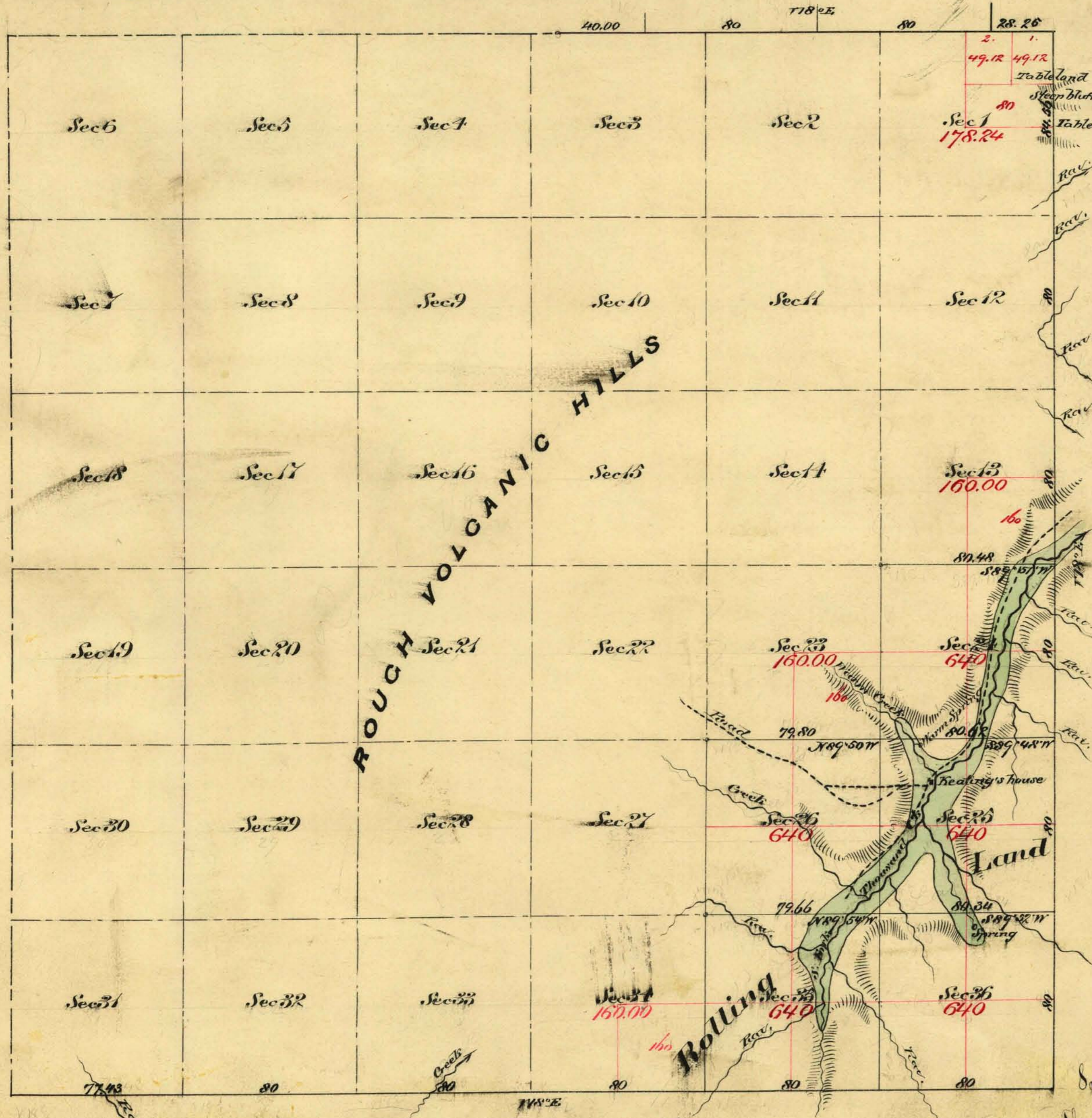


Township N^o 45 North

Range N^o 25 East

Mount Diablo Meridian



Aggregate Area of Public Land Surveyed
 Estimated " Rough Hills Unsurveyed
 Aggregate

| |
|------------------|
| 18,858.21 Ac. |
| 19,858.81 |
| <u>20,116.00</u> |

Commenced May 2^d 1879
 Completed " 22^d "

Sub division line not otherwise noted run with Variation of 18° East

The above plat of Township N^o 45 North of Range N^o 25 East Mount Diablo Meridian is hereby confirmed to the field notes of the surveys thereof on file in this office
 U. S. Surv. Genl. Office
 Virginia City, Nev. 11
 July 2^d 1879.

C. S. Davis
 U. S. Surv. Genl. Sec.

| Surveys designated | By whom surveyed | Date of Contract | Am't of Surveys | When Surveyed | N ^o Cont |
|--------------------|-------------------------|-----------------------------|-----------------|---------------|---------------------|
| N. boundary | Hatch, Skinner & Frible | July 20 th 1874 | 2 - 40 - 00 | 1874 | - 64 |
| S. E. " | G. M. Geerside | March 26 th 1879 | 12 - 01 - 99 | 1879 | - 87 |
| Subdivisions | " | " | 10 - 00 - 90 | May | " |

0522

T 45 N. R 25 E. V. D.