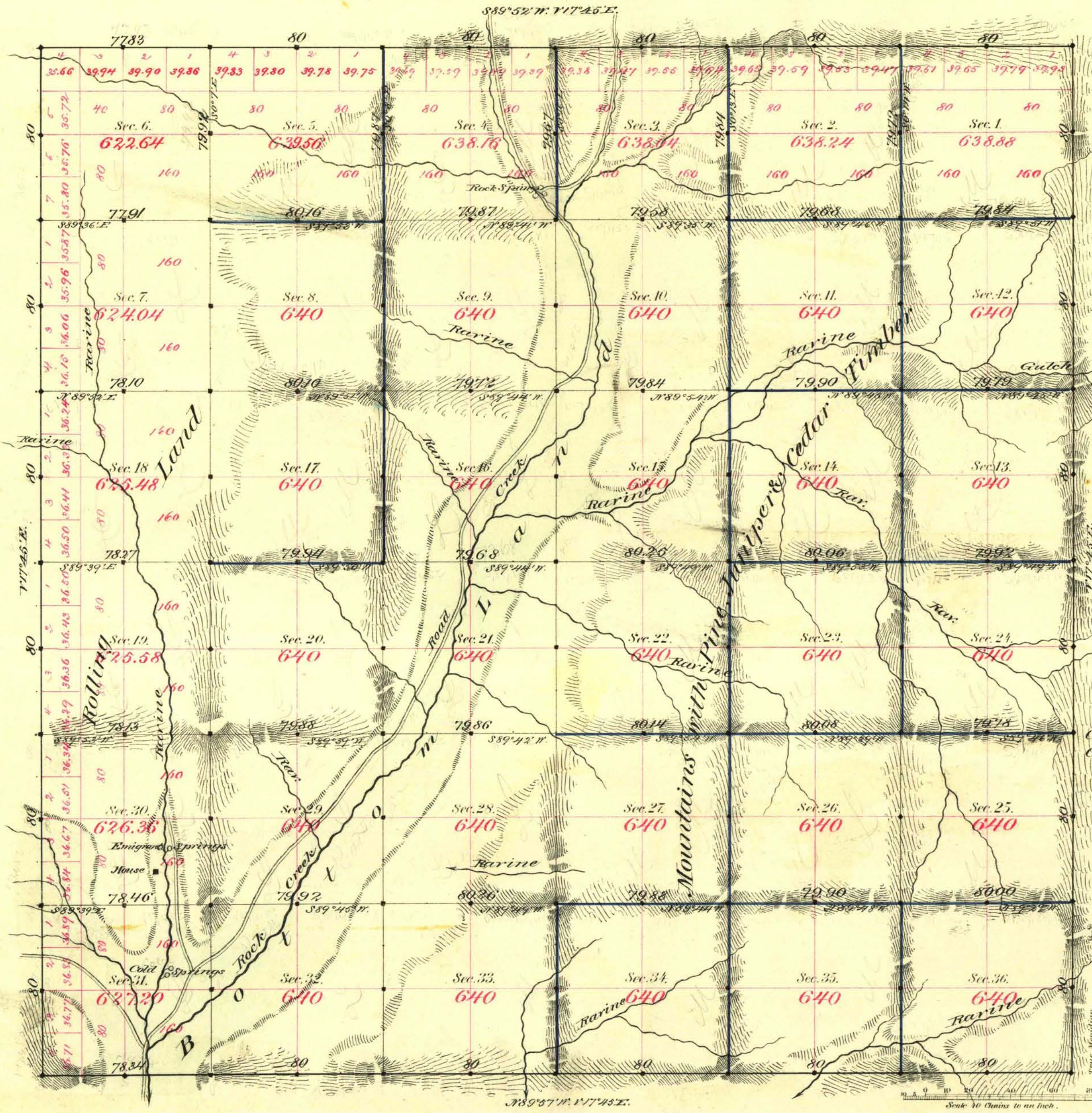


TOWNSHIP N^o 44 NORTH RANGE N^o 67 EAST MOUNT DIABLO MERIDIAN



Aggregate Area of Public Land surveyed 22,944.18 Acres

Commenced May 26th 1881
Completed June 2nd "

Subdivisions run with a Variation of 17°45' East.

Surveys Designated	By Whom Surveyed	Date of Contract	Amount of Surveys	When Surveyed
Township lines	Manroe & McClellan	March 26 th 1881	28 M. 70 Ch. 17 Acs	1881
Subdivisions blocks & blue #40			29-69-70 29-78-17	

N^o Con
120
4

The above Map of Township N^o 44 North of Range N^o 67 East
Mt Diablo Meridian is strictly conformable to the field
notes of the survey thereof on file in this Office, which have been examined and approved.
Surveyor General's Office,
Virginia City, Nevada
June 30th 1881
E. A. Parry
Sur. Gen. Nev.

A. L. Bancroft & Co. Lith. S. F.