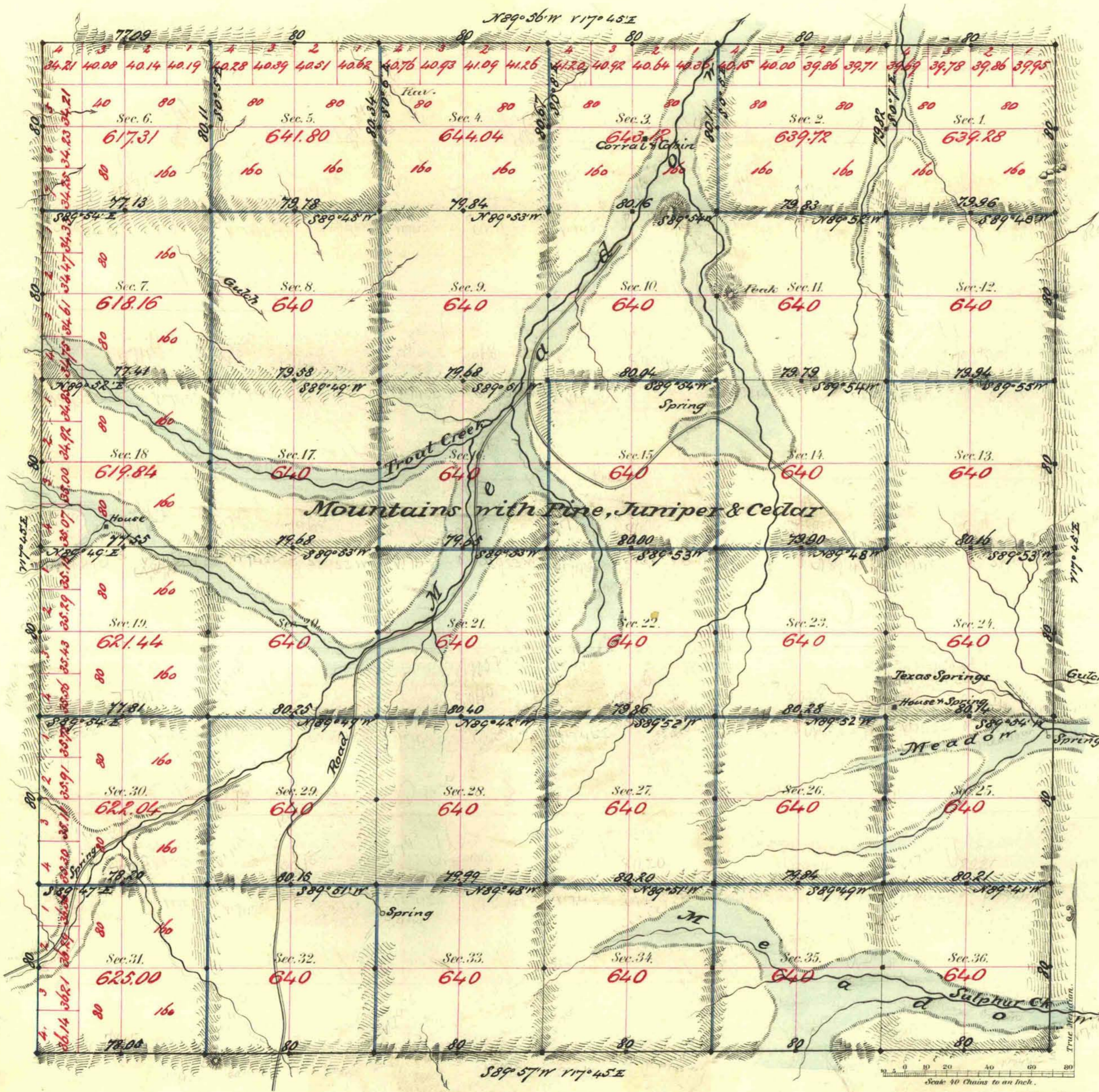


Re. West City, see marginal notations on plat of R64E.

TOWNSHIP N^o 44 NORTH RANGE N^o 65 EAST MOUNT DIABLO MERIDIAN



Aggregate Area of Public Land Surveyed 22,251.75 ac.

Completed April 1st 1881
Completed " " " "

Sub division run with a Var. of 17' 45" East.

Survey Designated	By Whom Surveyed	Date of Contract	Amount of Surveys	When Surveyed
By Day	Manuel McMillan	Dec. 19 th 1880	26 - 75 - 53	1881
M. J. & Co.	"	Feb. 15 th 1881	17 - 73 - 14	"
Subdivision Block 9	"	"	17 - 73 - 81	April
Block 10	"	"	11 - 74 - 65	"

700 con.
107
113

The above Map of Township N^o 44 North of Range N^o 65 East
Mount Diablo Meridian is strictly conformable to the field
notes of the survey thereof on file in this Office, which have been examined and approved.
Surveyor General's Office,
Virginia City Nev.
May 5th 1881
E. S. Davis
Sur. Gen. Nev.