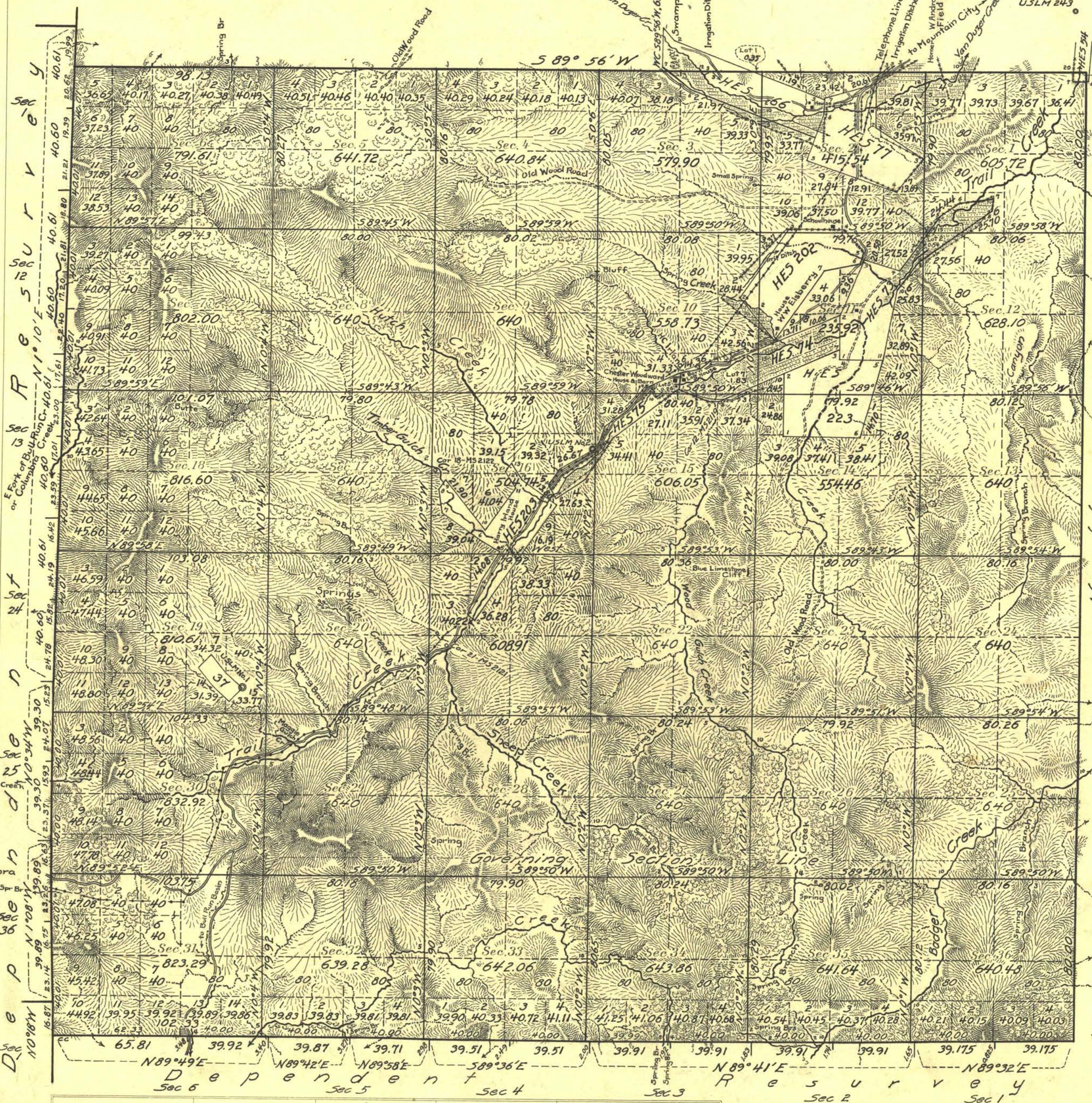


Township No 44 North Range No 53 East Mount Diablo Base & Meridian, Nevada



Surveyor reports numerous indications of mineral

Van Duzer Mining District Patented		
Surv. No	Claimant	Lode
37	J. Clark & J. McClay	Golden Eagle

Areas in Acres	
Public Land	22,984.98
Indian Reservation	
Indian Allotments	
Mineral Claims	20.52
Water Surface	
HE Surveys	1099.79
Total Area	24,105.29

Lot. 41°39'N
Long. 115°57'W

Scale 40 Chains to an inch

Mean Magnetic Declination

Surveys Designated	By Whom Surveyed	Group No.	Date	Amount of Surveys			When Surveyed	
				Mls.	chs.	lks.	Began	Completed
North Boundary Surv	Carl S. Swinholt	13	Feb 27, 1919	6	18	13	July 8, 1920	Sept 30, 1920
East Boundary Surv	US Surveyor			6	0	0	July 2, 1920	July 8, 1920
South Bdy. Dep. Resurv				6	22	32	June 21, 1920	July 2, 1920
West Bdy. Dep. Resurv				6	0	10	June 14, 1920	Sept. 30, 1920
Subdivisions				61	34	53	July 1, 1920	Oct. 2, 1920

The above map of Township No. 44 North Range No. 53 East, of the Mount Diablo Base & Meridian, State of Nevada, is strictly conformable to the field notes of the survey thereof on file in this office, which have been examined and approved

U. S. Surveyor General's Office.

Reno, Nevada, January 6, 1923

J. E. Belder
Surveyor General.