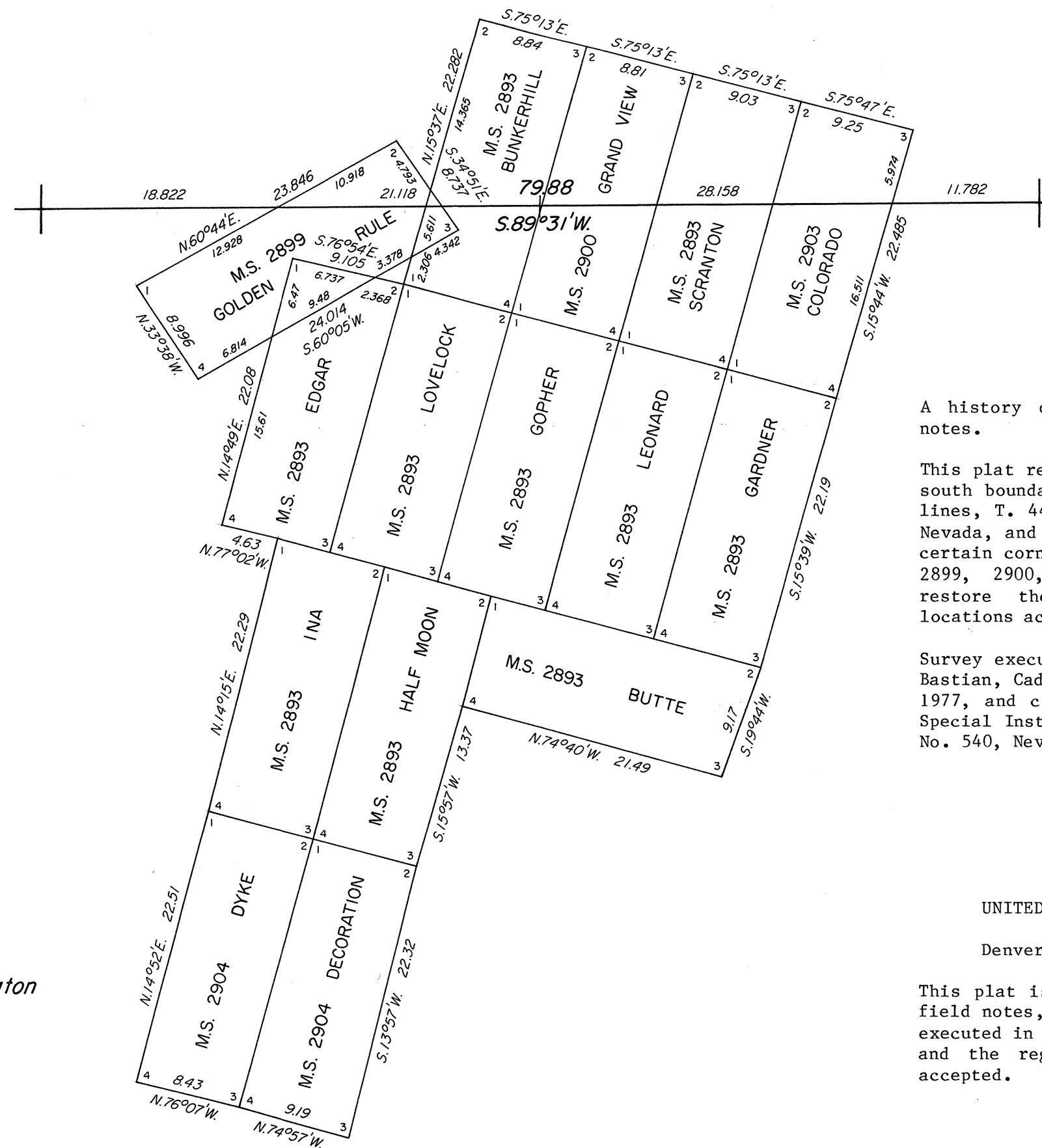


TOWNSHIP 44 NORTH, RANGE 52 EAST, OF THE MOUNT DIABLO MERIDIAN, NEVADA

DEPENDENT RESURVEY

ENLARGED DIAGRAM

Sec. 32



A history of surveys is contained in the field notes.

This plat represents the dependent resurvey of the south boundary, and a portion of the subdivisional lines, T. 44 N., R. 52 E., Mount Diablo Meridian, Nevada, and the retracement and remonumentation of certain corners of Mineral Survey Nos. 1962, 2893, 2899, 2900, 2903, 2904 and 4187, designed to restore the corners in their true original locations according to the best available evidence.

Survey executed by Duane R. Garoutte and Joseph A. Bastian, Cadastral Surveyors, beginning October 25, 1977, and completed November 8, 1978, pursuant to Special Instructions dated May 28, 1976, for Group No. 540, Nevada.

UNITED STATES DEPARTMENT OF THE INTERIOR
BUREAU OF LAND MANAGEMENT
Denver, Colorado June 17, 1980

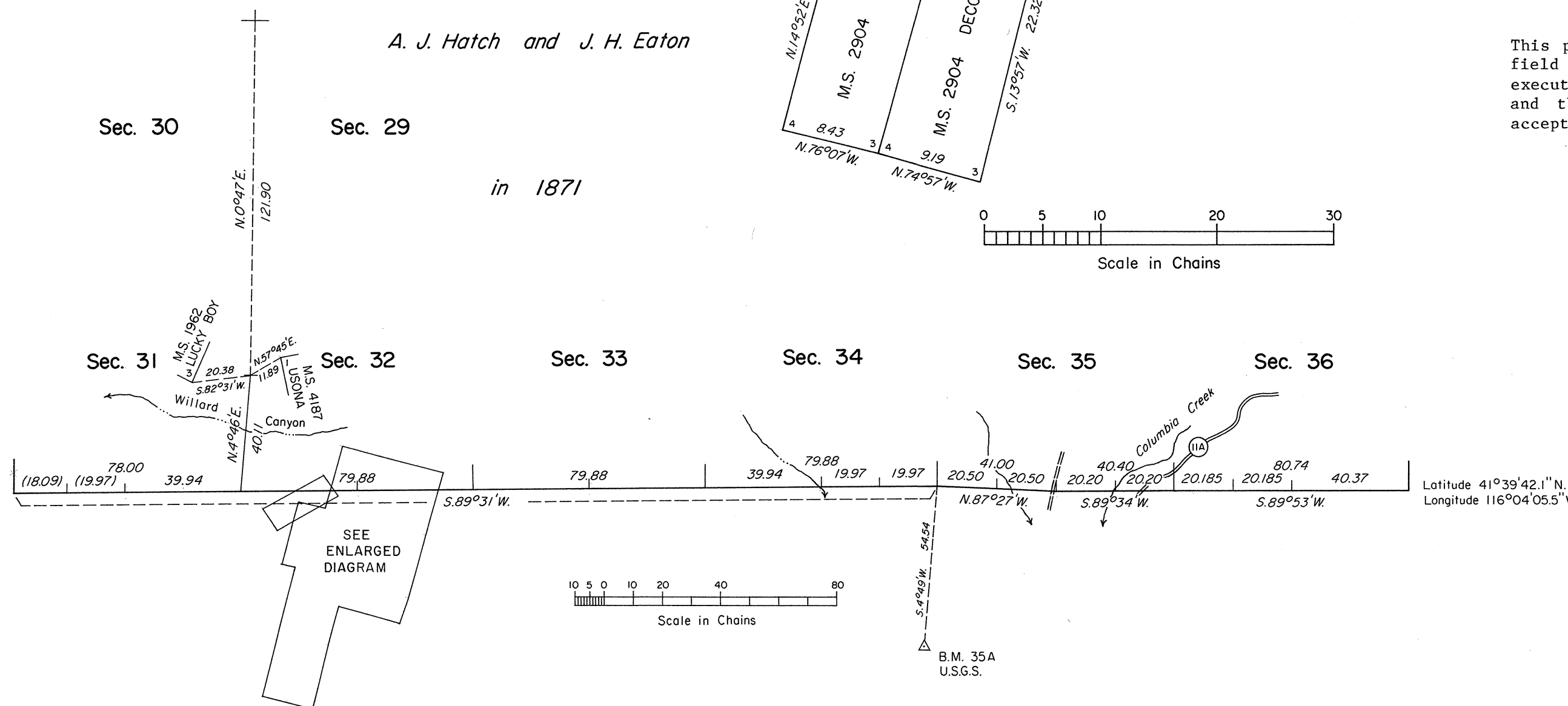
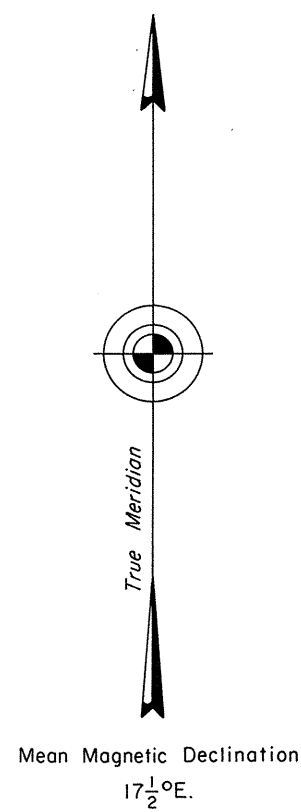
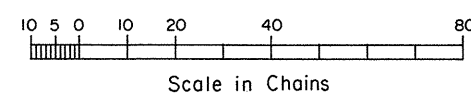
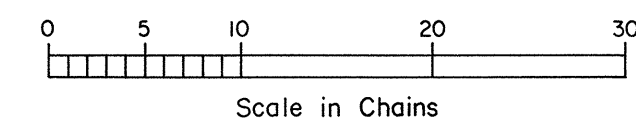
This plat is strictly conformable to the approved field notes, and the survey, having been correctly executed in accordance with the requirements of law and the regulations of this Bureau, is hereby accepted.

For the Director

Gary S. Speight

Acting Chief, Cadastral Survey
Examination and Approval Staff

Surveyed by
A. J. Hatch and J. H. Eaton
in 1871



Latitude 41°39'42.1" N.
Longitude 116°04'05.5" W.