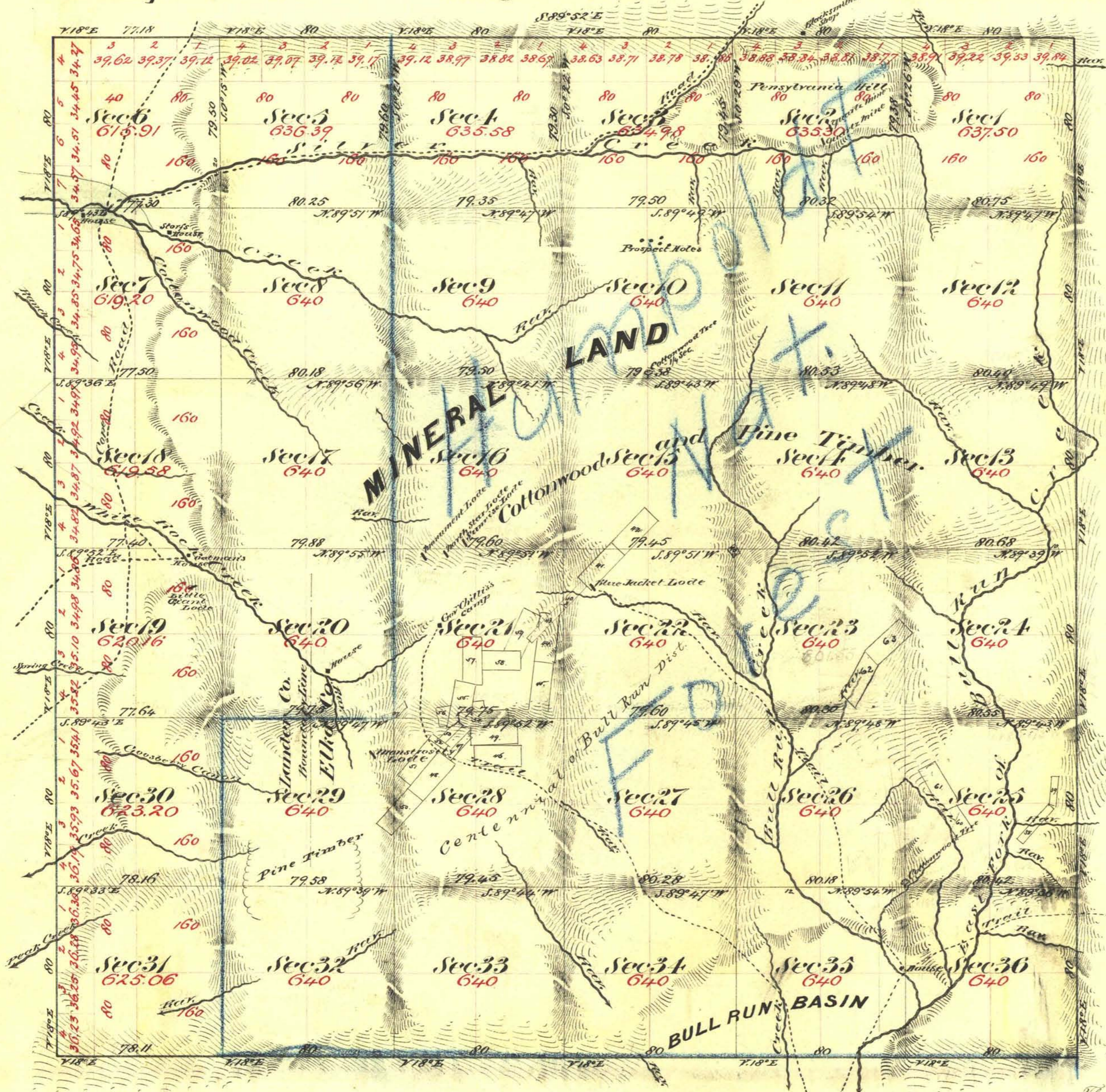


Township N° 44 North

Range N° 52 East

Mount Diablo Meridian



Aggregate Area of Public Land 3,403.11 Acres  
 " " Mineral " 19,499.75 "  
 Aggregate 22,902.86 "

19.05  
 19.00  
 38.05

Commenced March 30<sup>th</sup> 1871  
 Completed April 15<sup>th</sup> 1871

Subdivision Lines not otherwise noted run with a bar of 18' East

Surveys Designated	By Whom Surveyed	Date of Contract	Amount of Survey	When Surveyed	Acres
Township Lines	H. Hatch & H. Eaton	February 6 <sup>th</sup> 1871	23, 75, 29	1871	43
Subdivision Lines	" " " "	" " "	59, 65, 28	April 1871	"

The above map of Township N° 44 North, Range N° 52 East, Mount Diablo Meridian is strictly conformable to the field notes of the surveys thereon filed in this Office, which have been examined and approved by the U.S. Surveyor General's Office, Virginia City, Nevada, May 10<sup>th</sup> 1871

E. S. Davis  
 U.S. Surveyor General Nevada

T 44 N, R 52 E  
 LCA 1065 KB BIN 726 ORX 55