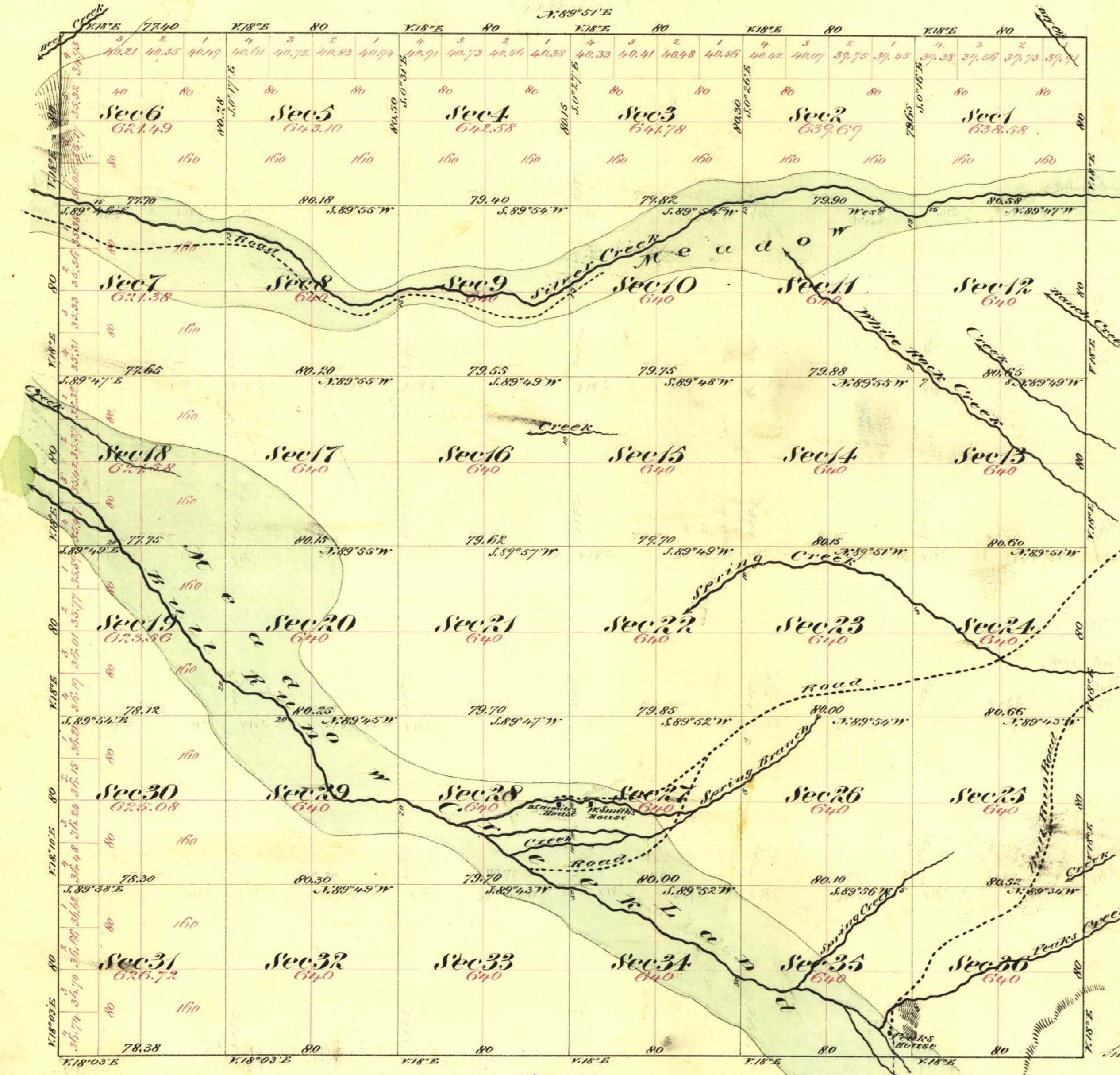


Township N<sup>o</sup> 44 North

Range N<sup>o</sup> 51 East

Mount Diablo Meridian



Aggregate Area of Public Land 22,945.54 Acres

Commenced March 18<sup>th</sup> 1871  
Completed March 28<sup>th</sup> 1871

Subdivision Lines not otherwise noted run with a Variation of 15' East

Surveys Designated	By Whom Surveyed	Date of Contract	Amount of Surveys M <sup>o</sup> C <sup>t</sup> A <sup>c</sup>	When Surveyed
Township Lines	A. J. Hatch & J. H. Colton	February 6 <sup>th</sup> 1871	23 75 78	1871
Subdivision Lines	" " " "	" " "	59 74 61	March 1871

77<sup>o</sup> Cor.  
413

The above Map of Township N<sup>o</sup> 44 North Range N<sup>o</sup> 51 East Mount Diablo Meridian is strictly conformable to the field notes of the Surveyors thereof on file in this Office, which have been examined and approved  
W. S. Surveyor General Nevada  
Virginia City Nevada  
May 10<sup>th</sup> 1871

2001

*W. S. Davis*  
W. S. Surveyor General Nevada

T 44 N, R 51 E  
V D