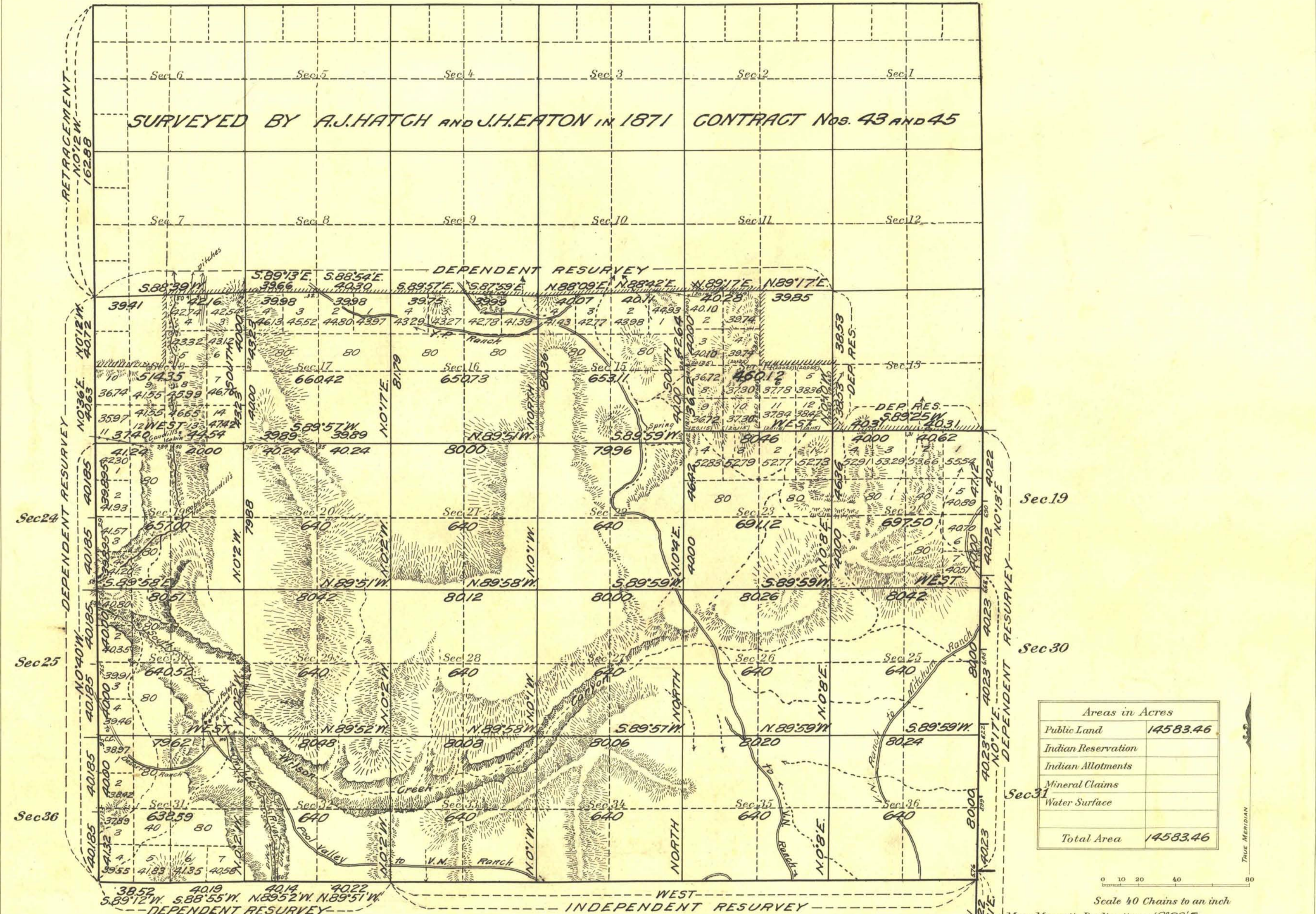


Township No. 44 North Range No. 50 East Mt. Diablo Meridian, Nevada

Survey accepted G. L. O.
February 6, 1920.



Areas in Acres	
Public Land	14583.46
Indian Reservation	
Indian Allotments	
Mineral Claims	
Water Surface	
Total Area	14583.46

Scale 40 Chains to an inch
 Mean Magnetic Declination 18° 29' E.
 Latitude 41° 35' N.
 Longitude 116° 20' W.

Surveys Designated	By Whom Surveyed	Group		Amount of Surveys			When Surveyed	
		No.	Date	Mls.	chs.	fts.	Begun	Completed
East Boundary Res.	J.G. Clark U.S.T.	51	Nov. 13, 1916	4	02	13	Aug. 16, 1918	Aug. 26, 1918
South Boundary Res.	"	5	"	5	79	07	Aug. 4, 1918	Aug. 26, 1918
West Boundary Res.	"	4	"	4	02	46	Aug. 10, 1918	Sept. 13, 1918
Subdivision Res.	"	6	"	6	79	26	Aug. 17, 1918	Aug. 31, 1918
Subdivision	"	36	"	36	18	81	Aug. 22, 1918	Sept. 17, 1918

The above map of Township No. 44 North Range No. 50 East of the Mt. Diablo Meridian Nevada is strictly conformable to the field notes of the survey thereof on file in this office, which have been examined and approved.

U. S. Surveyor General's Office.
 Reno Nevada May 1, 1919

John B. Sullivan
 Surveyor General.

x see field notes - Study sec 33 is 8022