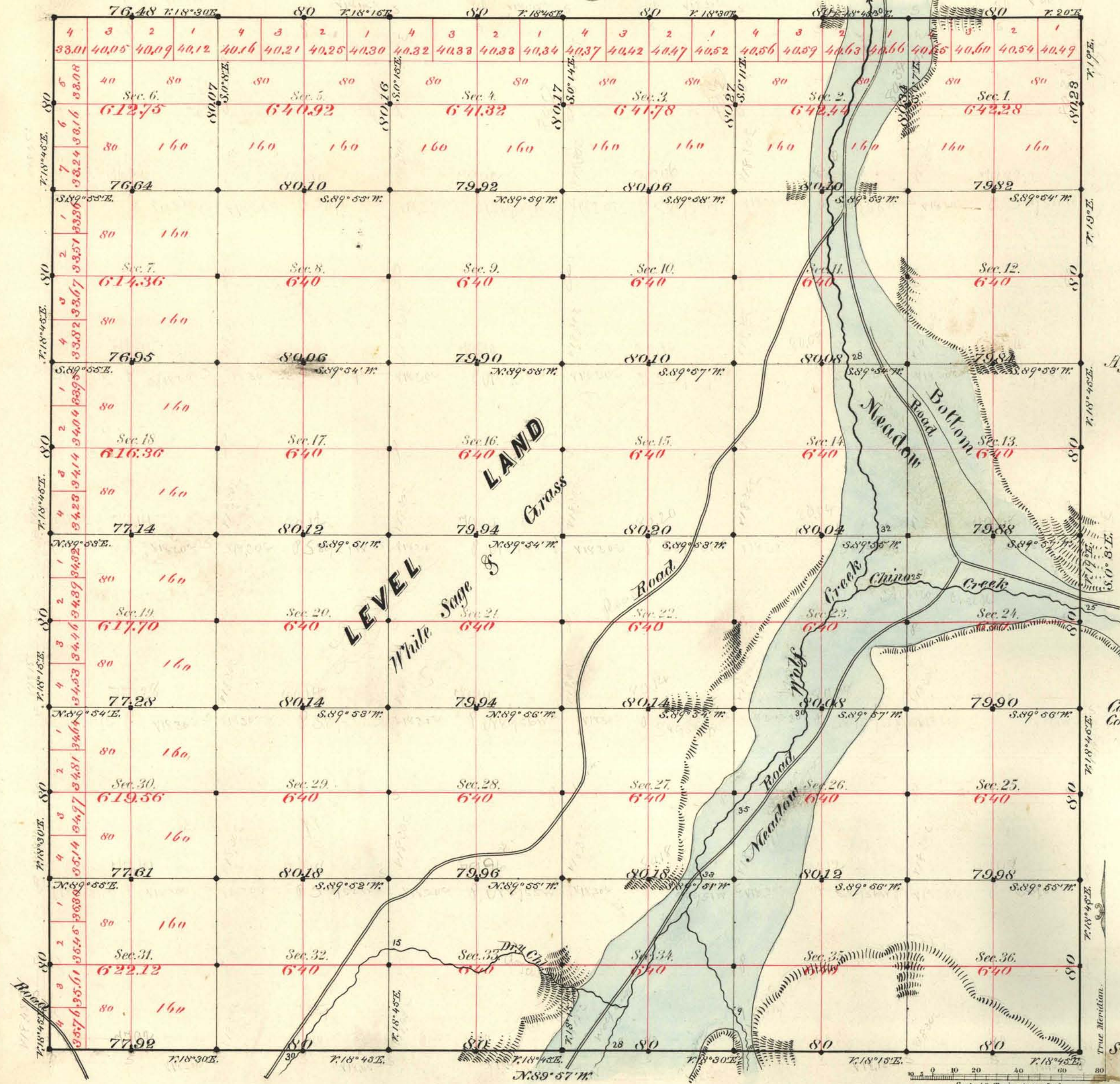


TOWNSHIP N^o 44 NORTH RANGE N^o 48 EAST MOUNT DIABLO MERIDIAN

N. 89° 57' W. (7) sec 7 45'



Aggregate Area of Public Land Surveyed 22911.59 Acres

Commenced May 15th 1883
Completed " 22nd "

Subdivisions not noted run with a Var of 18° 30' East

Surveys Designated	By Whom Surveyed	Date of Contract	Amount of Surveys	When Surveyed
Township lines	Smalley & Fitzpatrick	March 10 th 1883	23 74 63	1883
Section	"	"	59-67-41	May "

No. Cor'd
163
9

The above Map of Township N. 44 North of Range N. 48 East of Mount Diablo Meridian is strictly conformable to the field notes of the survey thereof on file in this Office, which have been examined and approved.

Surveyor General's Office,
Reno Nevada
August 9th 1883

L. C. Canning
Svr. Gen. Nevada