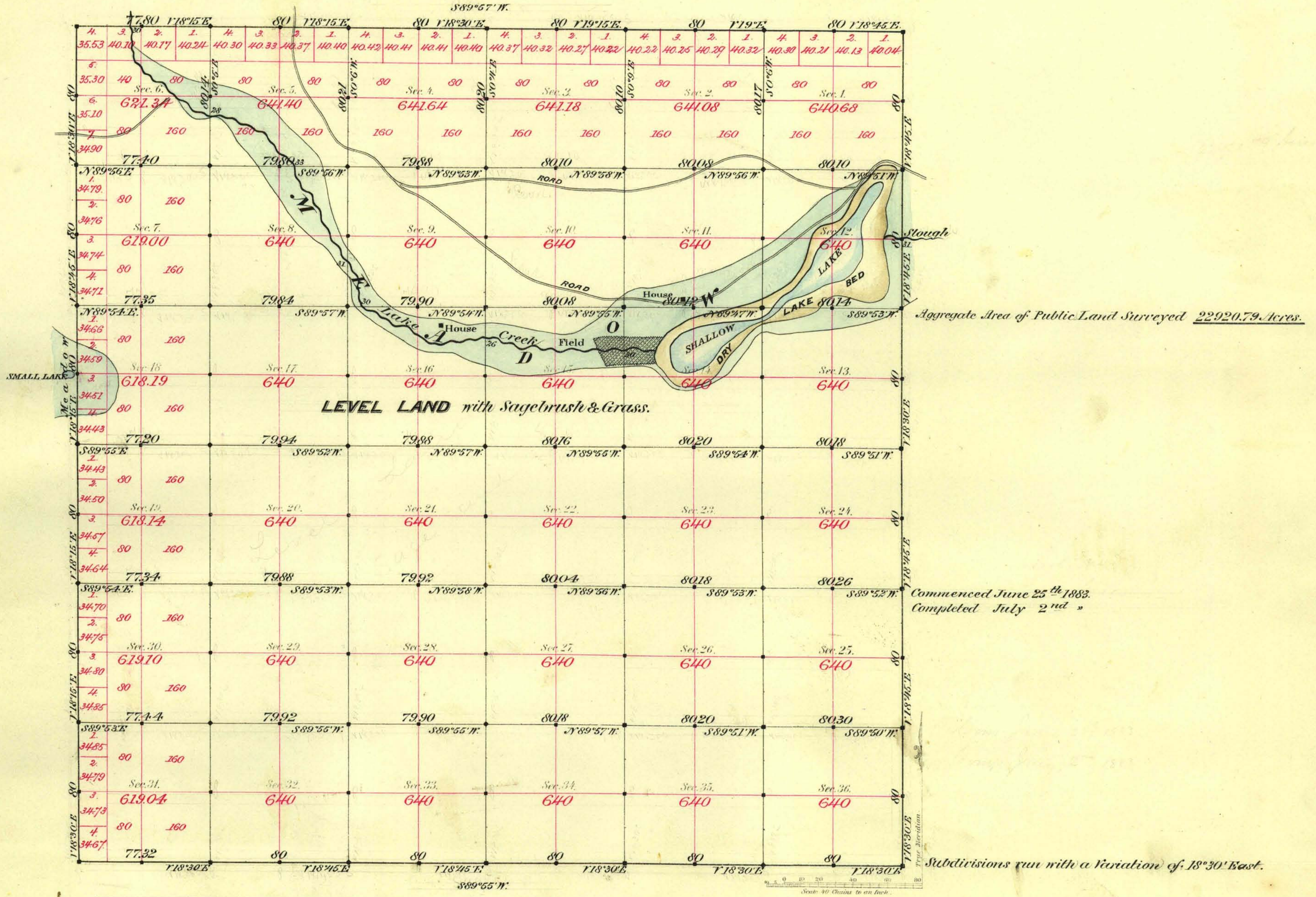


TOWNSHIP N^o 44 NORTH RANGE N^o 46 EAST MOUNT DIABLO MERIDIAN



Surveys Designated	By Whom Surveyed	Date of Contract	Amount of Surveys	When Surveyed
Township lines	Smyle & Fitzpatrick	March 10, 1883	23-75-12	1883
Subdivisions	"	"	59-68-73	June & July 1883

N^o 9 Cox
163

The above Map of Township N^o 44 North of Range N^o 46 East of Mount Diablo Meridian is strictly conformable to the field notes of the survey thereof on file in this Office, which have been examined and approved.
 Surveyor General's Office, }
 Reno, Nevada } *B. B. Canning*
 August 9th 1883 } *Sur. Gen. Nevada*