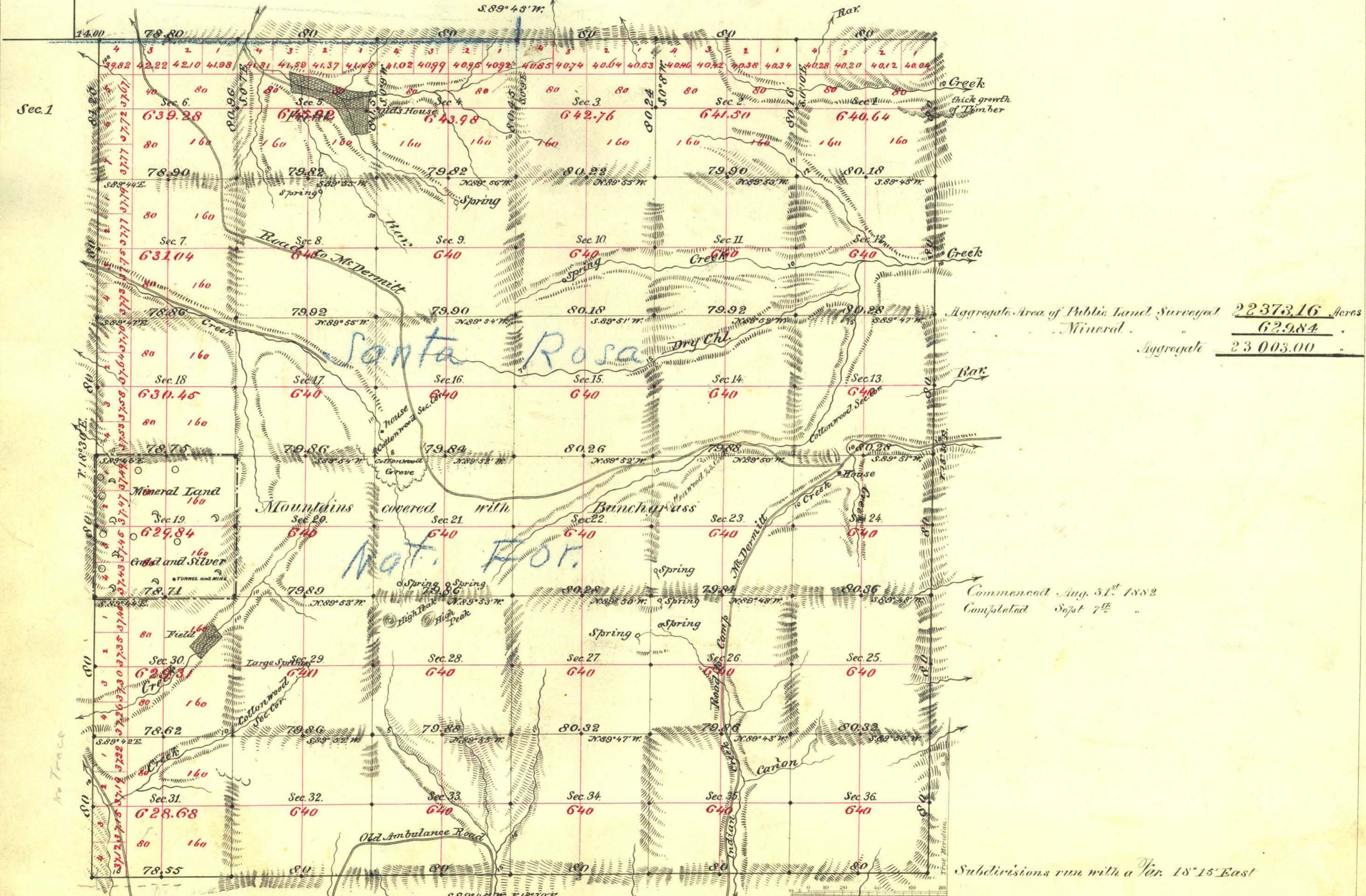


Sec 36

TOWNSHIP N<sup>o</sup> 44 NORTH RANGE N<sup>o</sup> 39 EAST MOUNT DIABLO MERIDIAN



Aggregate Area of Public Land Surveyed 22373.16 Acres  
 Mineral 629.84  
 Aggregate 23003.00

Commenced Aug. 31<sup>st</sup> 1882  
 Completed Sept 7<sup>th</sup>

Subdivisions run with a *Var. 18° 15' East*

Surveys Designated	By Whom Surveyed	Date of Contract	Amount of Surveys	When Surveyed
Township lines	Fisher & Morrison	July 21 <sup>st</sup> 1882	N <sup>o</sup> 23 - 48 - 55	1882
Subdivisions			59 - 76 - 90	Aug & Sept. "

76<sup>th</sup> Con  
 150 "

The above Map of Township N<sup>o</sup> 44 North of Range N<sup>o</sup> 39 East of Mount Diablo Meridian is strictly conformable to the field notes of the survey thereof on file in this Office, which have been examined and approved.  
 Surveyor General's Office,  
 Reno Nevada  
 November 6<sup>th</sup> 1882  
 A. S. Pava  
 Sur. Gen.

A.L. Bancroft & Co. Lith. S. F.