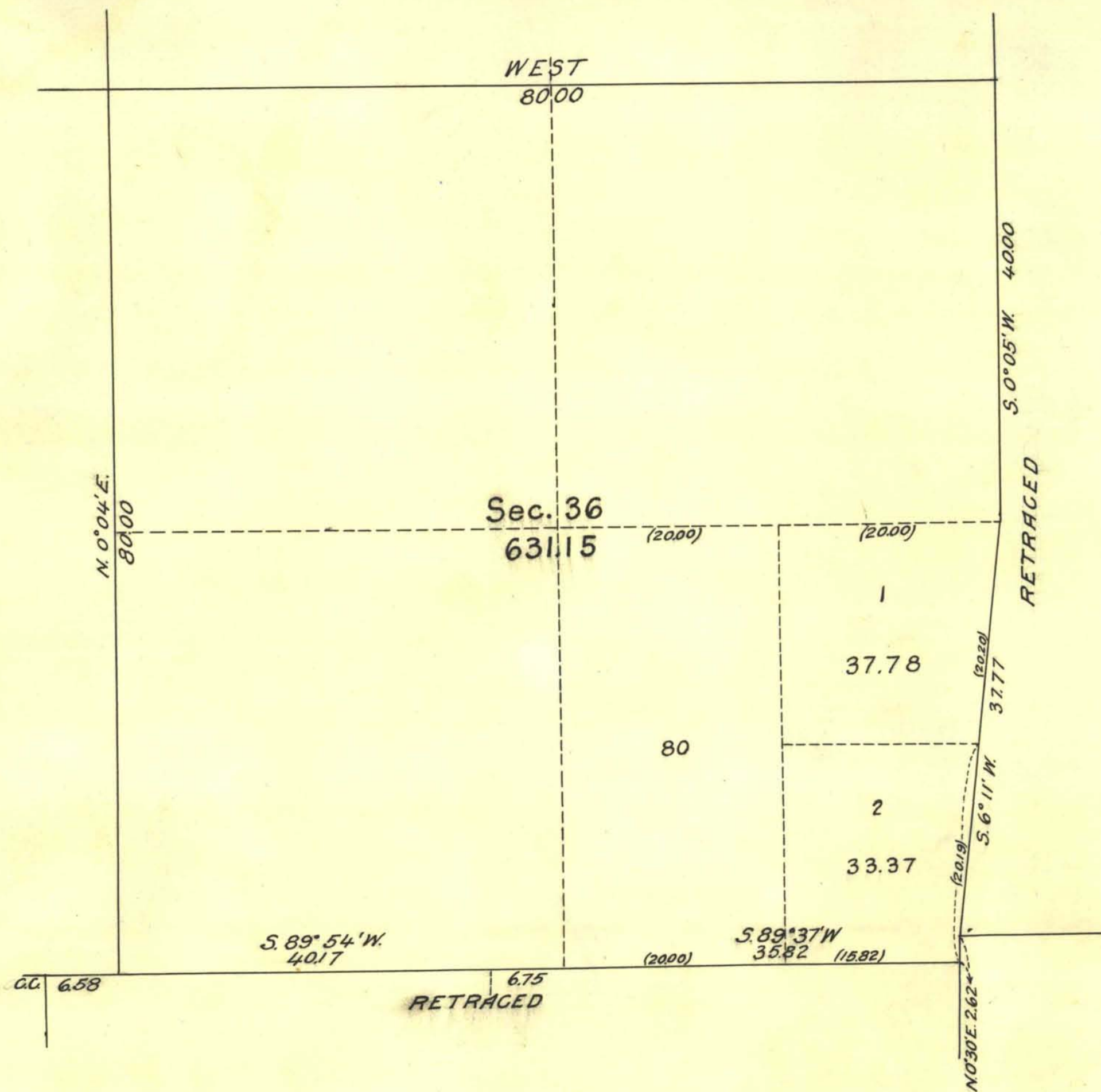


TOWNSHIP N° 44 NORTH RANGE N° 38 EAST
OF THE MOUNT DIABLO MERIDIAN NEVADA

SUPPLEMENTAL PLAT OF SEC. 36

Scale 10 Chs. to 1 inch.



PUBLIC SURVEY OFFICE

Reno, Nevada, January 23, 1929.

This supplemental plat of Section 36, T.44N., R.38E. Mount Diablo Meridian, Nevada, based upon plat approved May 21, 1913 and retracements in notes of T.43N., R.38E. Group No. 110 Nevada, approved April 6, 1927, prepared in accordance with instructions contained in the Commissioners letter E*EGH dated January 9, 1929, is hereby approved.

Ralph W. Nelson
Office Cadastral Engineer

DEPARTMENT OF THE INTERIOR
GENERAL LAND OFFICE

Washington D.C., February 4, 1929.

The amended lottings represented by this supplemental plat having been correctly made in accordance with the regulations of this office, the plat is hereby accepted.

Wm C Howell
Assistant Commissioner.