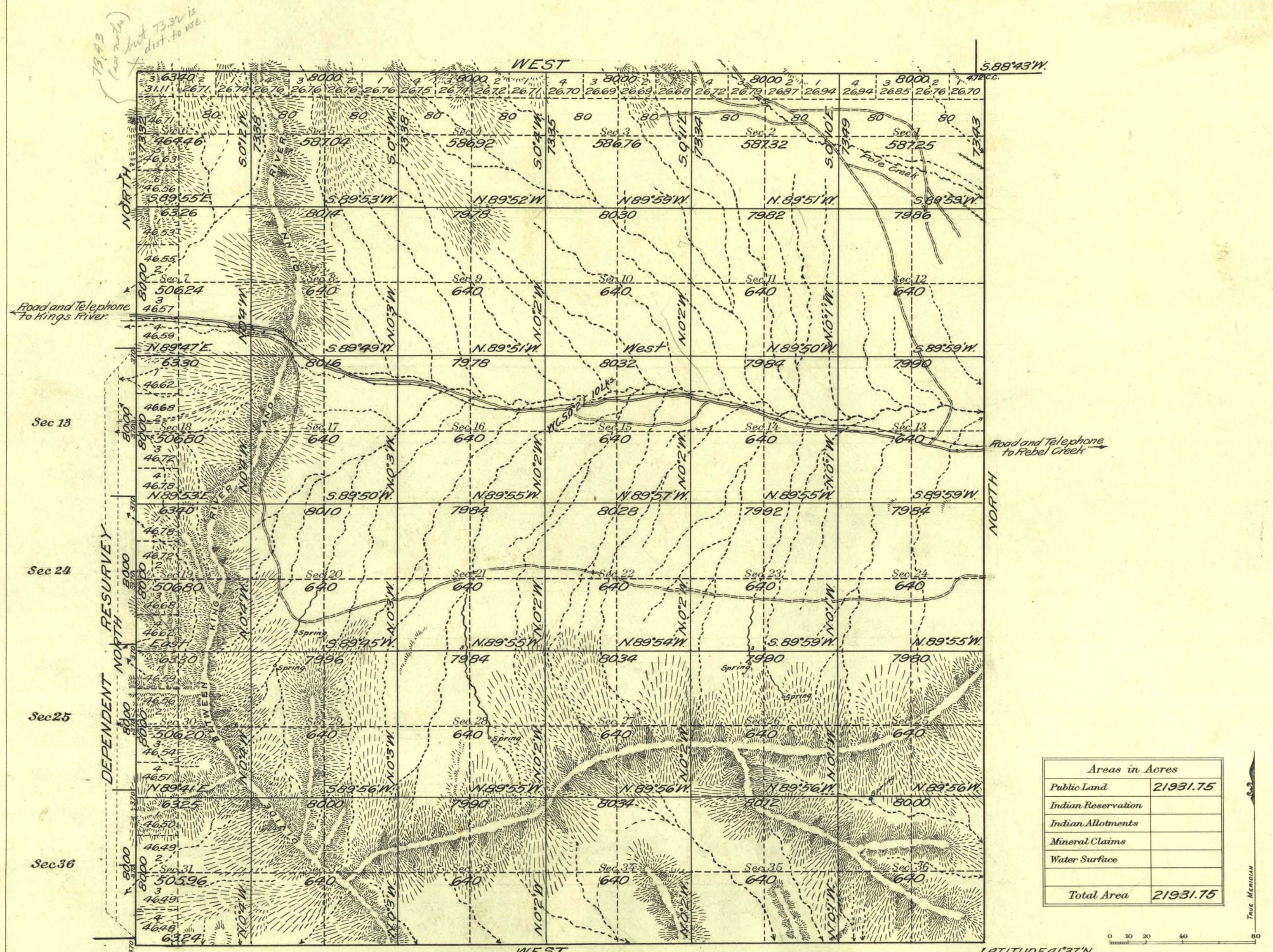


Township N^o 44 North Range N^o 35 East M^t Diablo Meridian, Nevada



Areas in Acres	
Public Land	21931.75
Indian Reservation	
Indian Allotments	
Mineral Claims	
Water Surface	
Total Area	21931.75

LATITUDE 41°37'N
 LONGITUDE 117°58'W
 Mean Magnetic Declination

Surveys Designated	By Whom Surveyed	Group			Amount of Surveys		When Surveyed	
		No.	Date	Mls.	chs.	lks.	Begun	Completed
North Boundary	Walter H. Good U.S.	110	April 19, 1923	5	63	40	Nov. 9, 1923	Nov. 10, 1923
West Boundary	Defties	4	Sept 27, 1923	00	00	00	Nov. 2, 1923	Nov. 2, 1923
West Boundary	Transitman	1		69	62	62	Nov. 3, 1923	Nov. 3, 1923
Subdivisions		58		43	53	53	Oct. 19, 1923	Nov. 14, 1923

The above map of Township No. 44 North Range No. 35 East of the Mt. Diablo Meridian, Nevada is strictly conformable to the field notes of the survey thereof on file in this office, which have been examined and approved.

U. S. Surveyor General's Office.
 Reno, Nevada, February 13, 1925

J. C. Selden
 Surveyor General.