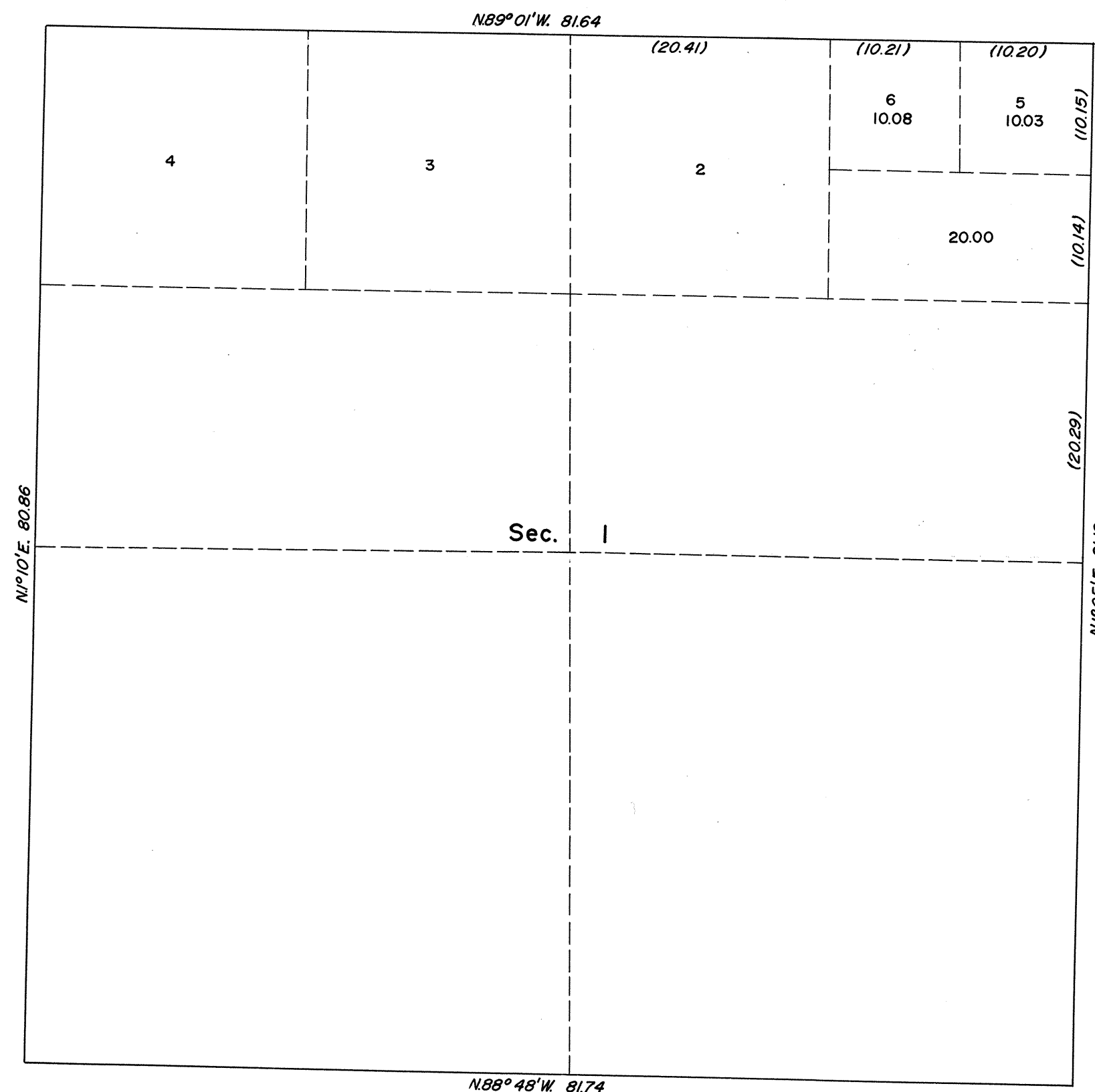
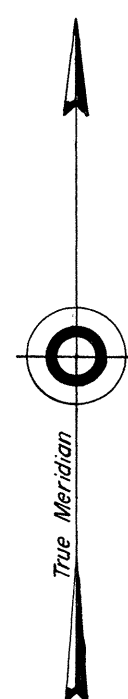


TOWNSHIP 44 NORTH, RANGE 33 EAST, OF THE MOUNT DIABLO MERIDIAN, NEVADA
SUPPLEMENTAL PLAT OF SECTION 1



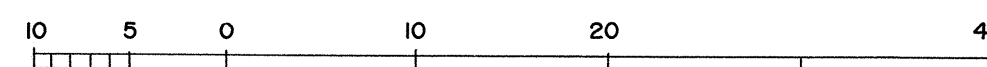
This plat, showing a subdivision of original Lot 1, Section 1, T. 44 N., R. 33 E., Mount Diablo Meridian, Nevada, is based upon the plats approved March 25, 1874, and April 26, 1960.

UNITED STATES DEPARTMENT OF THE INTERIOR
BUREAU OF LAND MANAGEMENT
Washington, D. C. February 14, 1964

This plat, showing amended lottings, is based upon the official records, and having been correctly prepared in accordance with the regulations, is hereby accepted.

For the Director

E. J. Pennington
Chief, Division of Engineering



Scale: 10 Chains to the inch