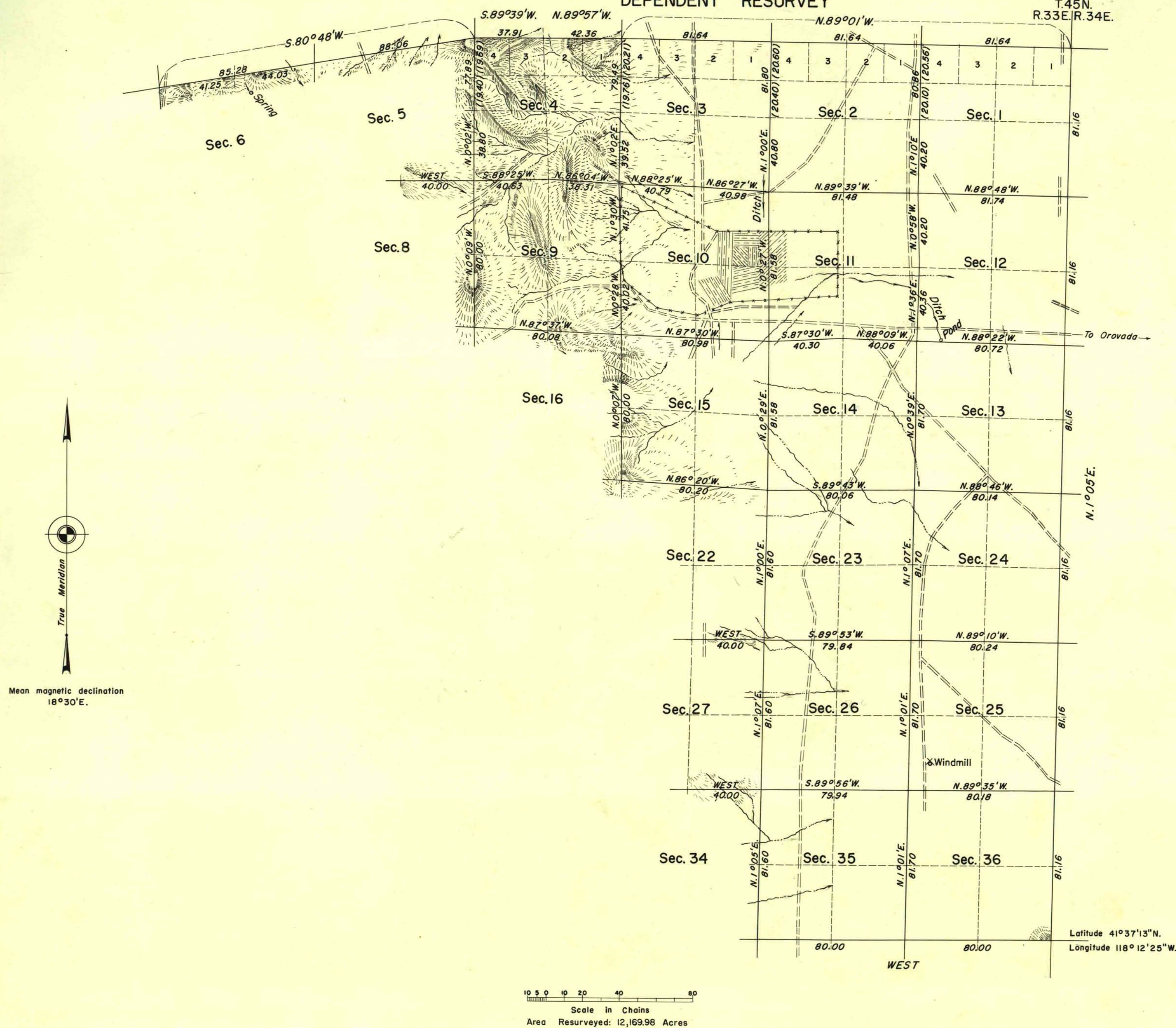


TOWNSHIP 44 NORTH, RANGE 33 EAST, OF THE MOUNT DIABLO MERIDIAN, NEVADA

DEPENDENT RESURVEY

T.45N.
R.33E. R.34E.

History of earlier surveys is contained in the field notes.

This plat represents a dependent resurvey of the north boundary, a portion of the south boundary, and a portion of the subdivisional lines of T. 44 N., R. 33 E., Mount Diablo Meridian, Nevada, designed to restore the corners in their original locations according to the best available evidence; lottings and areas are as shown on plat approved March 25, 1874.

Survey executed by Woodrow H. Sylvester June 20 to July 11, 1958, under special instructions dated September 19, 1957 and supplemental special instructions dated April 29, 1958, for Group 370, Nevada.

UNITED STATES DEPARTMENT OF THE INTERIOR
BUREAU OF LAND MANAGEMENT
Washington, D.C. April 26, 1960

This plat is strictly conformable to the approved field notes, and the survey, having been correctly executed in accordance with the requirements of law and the regulations of this Bureau, is hereby accepted.

For the Director

Donald O. Clement

Cadastral Engineering Staff Officer

0953 a

T.44 N., R.33 E.