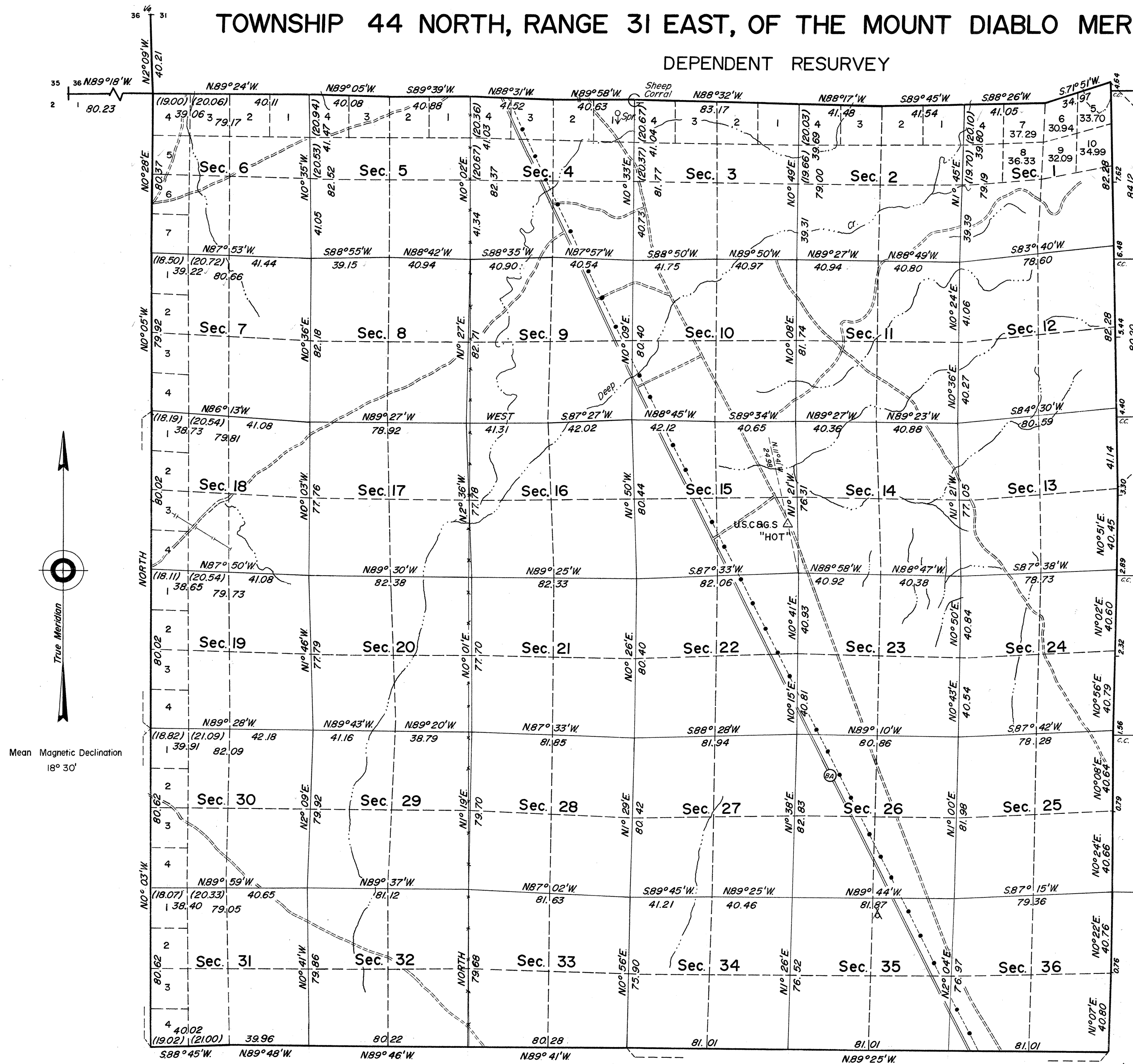


TOWNSHIP 44 NORTH, RANGE 31 EAST, OF THE MOUNT DIABLO MERIDIAN, NEVADA

DEPENDENT RESURVEY



This plat represents a retracement and reestablishment of the north and west boundaries and the subdivisional lines designed to restore the corners in their true original locations according to the best available evidence.

The history of previous surveys is contained in the field note record. Excepting as shown hereon, the lottings and areas are as shown on the plat approved April 17, 1875.

The resurvey was executed by Lancel E. Bland, beginning May 3, 1962, and completed May 25, 1962, pursuant to Special Instructions for Group No. 399, Nevada, dated March 16, 1962.

UNITED STATES DEPARTMENT OF THE INTERIOR
BUREAU OF LAND MANAGEMENT
Washington, D. C. December 19, 1963

This plat is strictly conformable to the approved field notes, and the survey, having been correctly executed in accordance with the requirements of law and the regulations of this Bureau, is hereby accepted.

For the Director

E. E. Lemington
Chief, Division of Engineering

Lat. 41°38'13.83"N
Long. 118°26'39.22"W

Scale in chains
Area Resurveyed 22,912.76 Acres

0843-A

T44N R31E