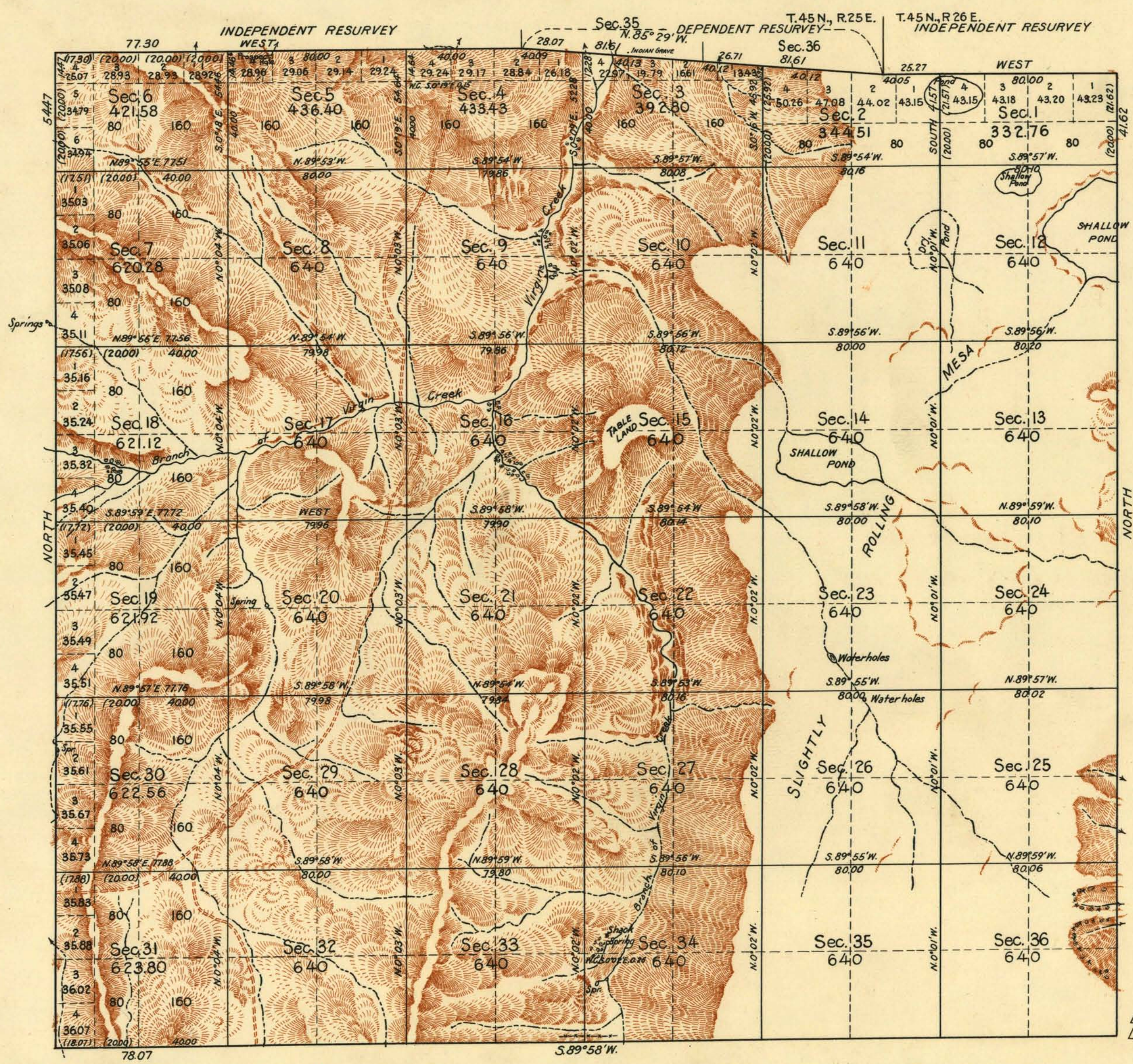


TOWNSHIP N^o 44 NORTH., RANGE N^o 25 EAST OF THE MOUNT DIABLO MERIDIAN, NEVADA.



Note - The Engineer reports that the north eastern portion of the township is similar to that of a contiguous opal producing field. There is also evidence of nitrates in a great number of the exposed ledges.

Latitude 41°40'N.
Longitude 119°06'W.

Scale: 40 Chains to an Inch. Area Surveyed, 21471.16 Acres.

| LINES DESIGNATED | BY WHOM SURVEYED | GROUP | | MILEAGE | | WHEN SURVEYED | |
|--------------------|------------------|----------------|-----------------|---------|-------|----------------|----------------|
| | | N ^o | DATE | MLS. | CHS. | BEGUN | COMPLETED |
| South Boundary | H.W. Reppert | 52 | March 6, 1917. | 5 | 78.07 | July 21, 1917. | Aug. 21, 1918. |
| E. & W. Boundaries | Walter H. Good | 122 | March 21, 1925. | 11 | 16.09 | June 28, 1927. | Aug. 4, 1927. |
| Subdivisional | " " " | " | " " " | 57 | 37.09 | " 29, 1927. | " " " |
| " | Carl S. Swanholm | " | " " " | 2 | 47.30 | Aug. 27, 1929. | " 28, 1929. |
| N.&W. Boundaries | " " " | " | " " " | 5 | 52.28 | " " " | " " " |

Office of U.S. Supervisor of Surveys
Denver, Colorado Feb. 19, 1931
The above plot of Township No. 44 North, Range No 25 East of the Mount Diablo Meridian, Nevada is strictly conformable to the field notes of the survey thereof which have been examined and approved.

Wm. H. Danson
U.S. Supervisor of Surveys.

DEPARTMENT OF THE INTERIOR
GENERAL LAND OFFICE.
Washington, D.C., February 28, 1931
The survey represented by this plot having been correctly executed in accordance with the requirements of law and the regulations of this office, is hereby accepted.

Thos. C. Havell
Assistant Commissioner.