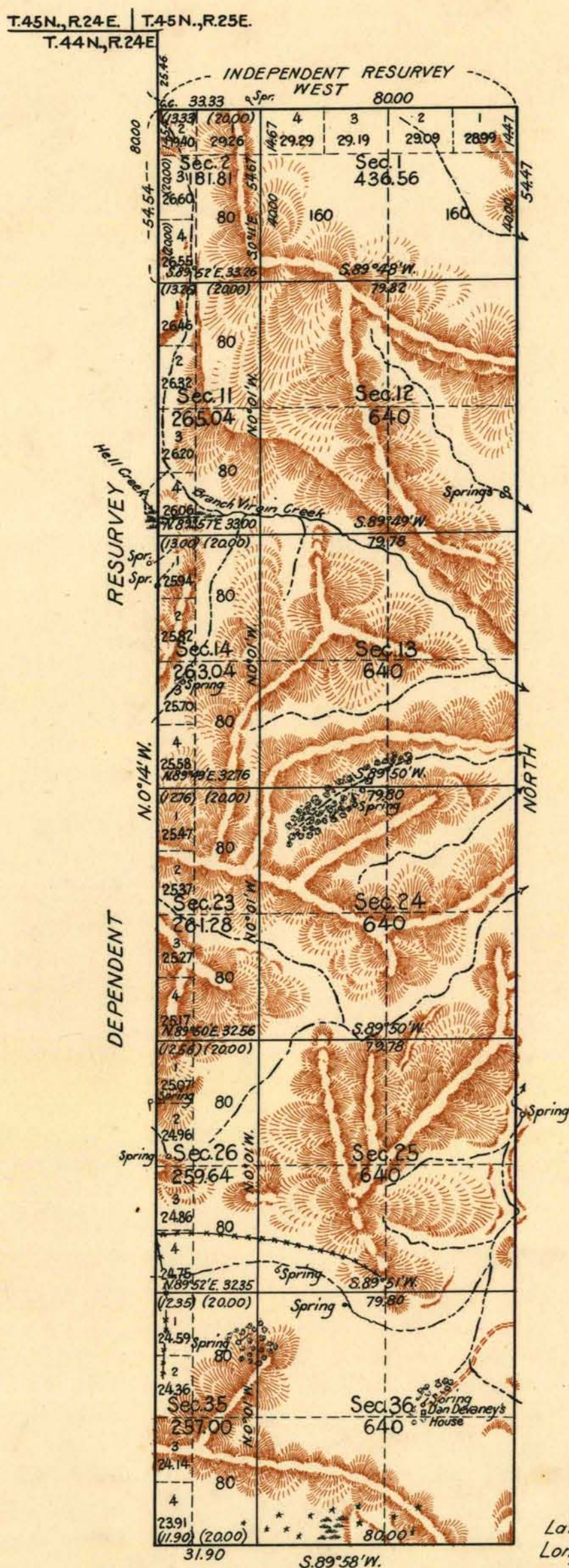


TOWNSHIP N<sup>o</sup>44 NORTH, RANGE N<sup>o</sup>24½ EAST OF THE MOUNT DIABLO MERIDIAN, NEVADA.



Latitude 41°40'N.  
Longitude 119°13'W.

Scale: 40 Chains to an Inch.

Area Surveyed 5,124.37

LINES DESIGNATED	BY WHOM SURVEYED	GROUP		MILEAGE		WHEN SURVEYED	
		N <sup>o</sup>	DATE	MLS.	CHS.	BEGUN	COMPLETED
South boundary	H.W. Reppert	52	March 16, 1917.	1	31.90	Oct. 21, 1918.	Oct. 21, 1918.
E. "	Walter H. Good	122	March 21, 1925	5	54.47	July 25, 1927.	Aug. 23, 1927.
N.&W. "	Carl S. Swenholm	"	" " "	7	33.33	Aug. 26, 1929.	Aug. 31, 1929.
Subdivisions	Walter H. Good	"	" " "	12	57.58	July 27, 1929.	Aug. 23, 1927.

Office of U.S. Supervisor of Surveys.  
Denver, Colorado, Feb. 19, 1931  
The above plat of Township, No 44 North, Range No 24½ East of the Mount Diablo Meridian, Nevada, is strictly conformable to the field notes of the survey thereof which have been examined and approved.

*Walter H. Good*  
U.S. Supervisor of Surveys.

DEPARTMENT OF THE INTERIOR  
GENERAL LAND OFFICE  
Washington, D.C., February 28, 1931  
The survey represented by this plat having been correctly executed in accordance with the requirements of law and the regulations of this office, is hereby accepted.

*Thomas C. Howell*  
Assistant Commissioner.