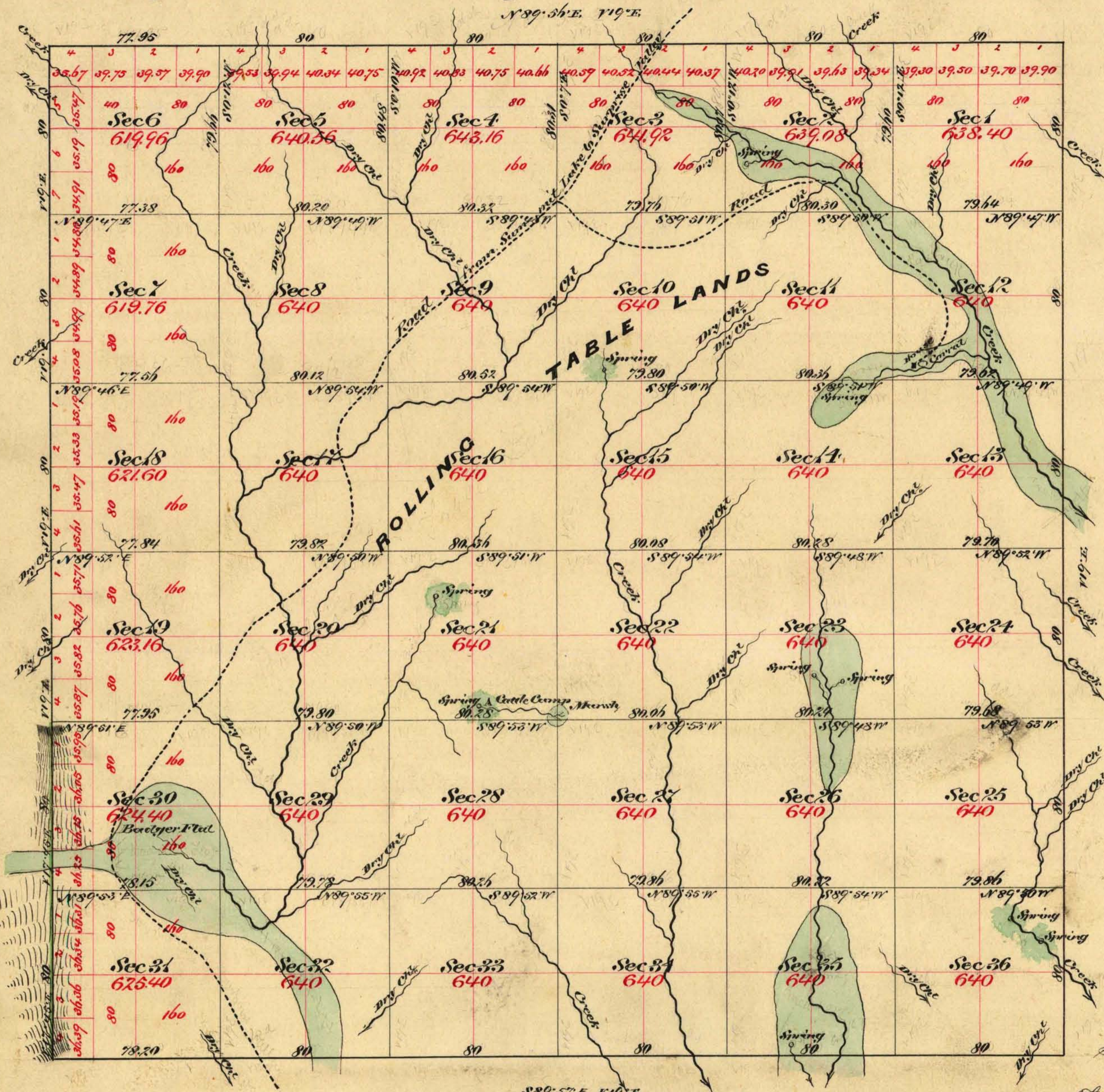


Township N<sup>o</sup> 44 North

Range N<sup>o</sup> 24 East

Mount Diablo Meridian



Aggregate Area of Public Land Surveyed 22,937.40 Acres

Commenced May 25<sup>th</sup> 1877  
Completed " 31<sup>st</sup> "

Subdivisions not otherwise noted run with a Variation of 19° East

Surveys designated	By whom surveyed	Date of Contract	Start of Surveys	When Surveyed	No. Cont.
2 Miles of W. boundary line	Ganside & Preble	Nov <sup>r</sup> 18 <sup>th</sup> 1873	7-00-00	1874	61
Rest of Township line	St. W. Ganside	" 11 <sup>th</sup> 1876	21-74-15	1877	74
Subdivisions	" " "	" " "	59-70-02	May "	"

0466

The above Map of Township N<sup>o</sup> 44 North Range N<sup>o</sup> 24 East Mount Diablo Meridian is strictly conformable to the field notes of the surveys thereof on file in this office which have been examined and approved  
U.S. Surveyor General Office  
Virginia City, Nev.  
June 20<sup>th</sup> 1877

T 44 N, R 24 E

*E. J. Parris*  
U.S. Surveyor General Nevada